

El Dorado

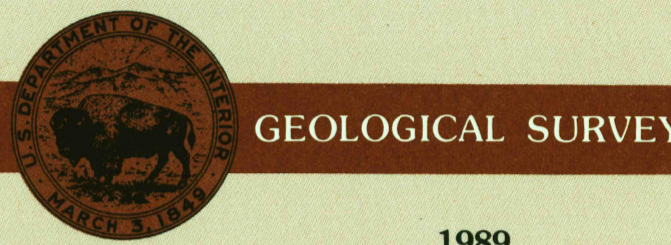
ARKANSAS – LOUISIANA

1:250 000-scale metric
topographic map



1 X 2 DEGREE QUADRANGLE
SHOWING

- Contours and elevations in meters
- Highways, roads and other manmade structures
- Water features
- Woodland areas
- Geographic names



Produced by the United States Geological Survey
Compiled from USGS 1:100 000-scale maps dated 1985-86
Supersedes map dated 1953. Map edited 1989

North American Datum of 1983 (NAD 83). Projection and 10 000-meter grid: Universal Transverse Mercator, zone 15
25 000-meter grid ticks: Arkansas (south zone) and Louisiana (north zone), Coordinate Systems of 4983

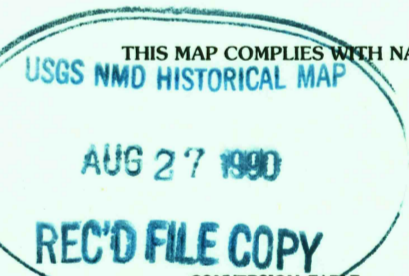
The difference between NAD 83 and North American Datum of 1927 (NAD 27) for 7.5-minute intersections is given in USGS Bulletin 1875

Certain land grant names and boundaries are omitted to avoid congestion

There may be private inholdings within the boundaries of the National or State reservations shown on this map

1989 MAGNETIC DECLINATION FROM TRUE NORTH VARIES FROM 4° (80 MILS) EASTERN FOR THE CENTER OF THE WEST EDGE TO 3° (60 MILS) EASTERN FOR THE CENTER OF THE EAST EDGE. MEAN ANNUAL CHANGE IS 6.6 WESTERLY

CONTOUR INTERVAL 20 METERS
NATIONAL GEODETIC VERTICAL DATUM OF 1929
ELEVATIONS SHOWN TO THE NEAREST METER



Meters	Feet	Meters	Feet
1	3.2808	7	22.9657
2	6.5617	8	26.2467
3	9.8425	9	29.5276
4	13.1234	10	32.8084
5	16.4042		
6	19.6850		
7	22.9657		
8	26.2467		
9	29.5276		
10	32.8084		

To convert meters to feet multiply by 3.2808
To convert feet to meters multiply by 0.3048

ADJOINING MAPS		
1	2	3
4		5
6	7	8

- McAlester
- Little Rock
- Helena
- Texasiana
- Greenwood
- Tyler
- Shreveport
- Jackson

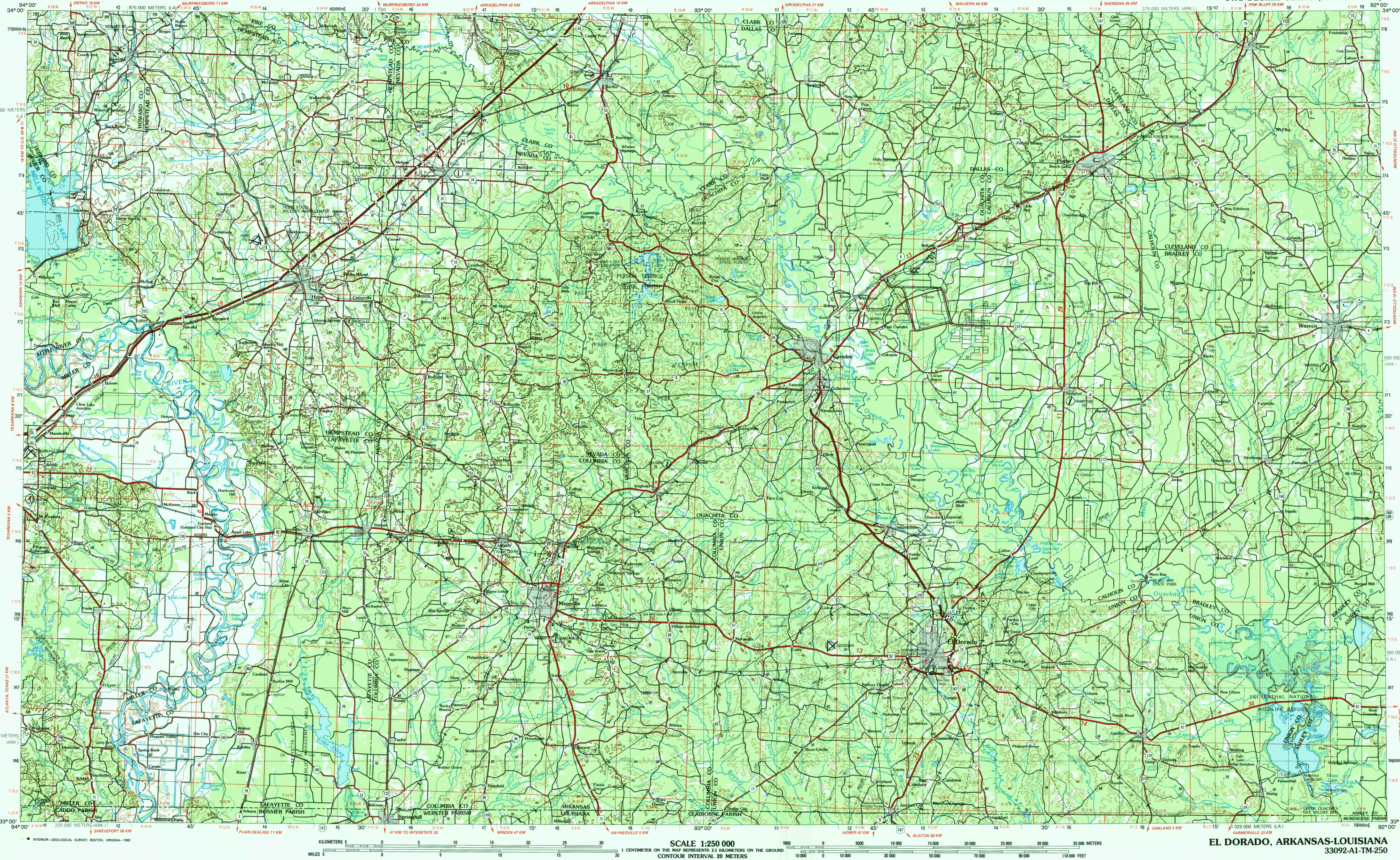
FOR SALE BY U.S. GEOLOGICAL SURVEY
DENVER, COLORADO 80225, OR RESTON, VIRGINIA 22092

Topographic Map Symbols

Dual highway; interchange	
Primary highway, hard surface	
Secondary highway, hard surface	
Light duty road, hard or improved surface	
Other road; trail	
Road marker: Interstate: U.S.; State	
Bridge: overpass; underpass	
Tunnel: road; railroad	
Railroad: standard gauge; single, multiple track	
Railroad: narrow gauge; single, multiple track	
Buildup area; locality; elevation	
Airport: runway pattern known; unknown	
National boundary	
State boundary	
County boundary	
National or State reservation boundary	
Land grant boundary	
U.S. public lands survey: range, township (surveyed)	
U.S. public lands survey: range, township (proposed)	
Powerline; pipeline: aboveground, underground	
Dam; landmark feature; landmark building	
Well; water; other; spring; tank	
Cave; mine; quarry; oil platform	
Landmark area; landmark railroad	
Disrupted surface: strip mine, lava, sand	
Contours: index, intermediate; supplementary	
Bathymetric contours: index; primary	
Bathymetric contours: intermediate; supplementary	
Stream, lake: perennial; intermittent	
Rapids, large and small; falls, large and small	
Land subject to controlled inundation; marsh, swamp	
Woodland; orchard, vineyard	
Mangrove	

Figures in red denote approximate distances in kilometers between markers

EL DORADO, ARKANSAS-LOUISIANA



SCALE 1:250 000

1 CENTIMETER ON THE MAP REPRESENTS 2.5 KILOMETERS ON THE GROUND
CONTOUR INTERVAL 20 METERS

EL DORADO, ARKANSAS-LOUISIANA

33092-A1-TM-250

1989