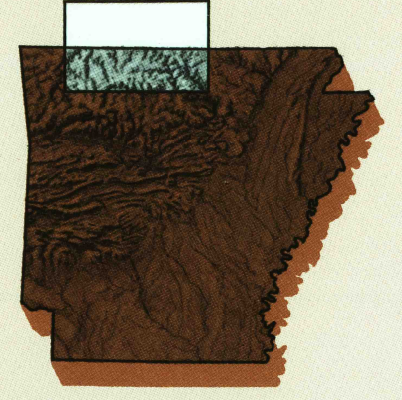


# Harrison

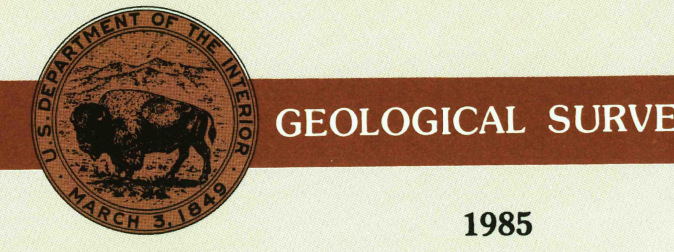
ARKANSAS–MISSOURI

1:250 000-scale *metric* topographic map



1 X 2 DEGREE QUADRANGLE SHOWING

- Contours and elevations in meters
- Highways, roads and other manmade structures
- Water features
- Woodland areas
- Geographic names



Produced by the United States Geological Survey  
Compiled from 1:100 000-scale maps dated 1985  
Supersedes map dated 1969. Map edited 1985  
Projection and 10 000-meter grid zone 15: Universal Transverse Mercator  
100 000-foot grid ticks based on Arkansas coordinate system, north zone, and Missouri coordinate system, central and west zones 1927 North American Datum  
To place on the predicted North American Datum 1983, move the projection lines 4 meters south and 16 meters east  
Location of geodetic control established by government agencies is shown on corresponding 1:250 000-scale Geodetic Control Diagram  
There may be private inholdings within the boundaries of the National or State reservations shown on this map

1985 MAGNETIC DECLINATION FROM TRUE NORTH VARIES FROM 5°11' (18 MILES) EASTERLY FOR THE CENTER OF THE WEST EDGE TO 4° (71 MILES) EASTERLY FOR THE CENTER OF THE EAST EDGE. MEAN ANNUAL CHANGE IS 6.0" WESTERLY

CONTOUR INTERVAL 40 METERS  
NATIONAL GEODETIC VERTICAL DATUM OF 1929  
ELEVATIONS SHOWN TO THE NEAREST METER

THIS MAP COMPLIES WITH NATIONAL MAP ACCURACY STANDARDS

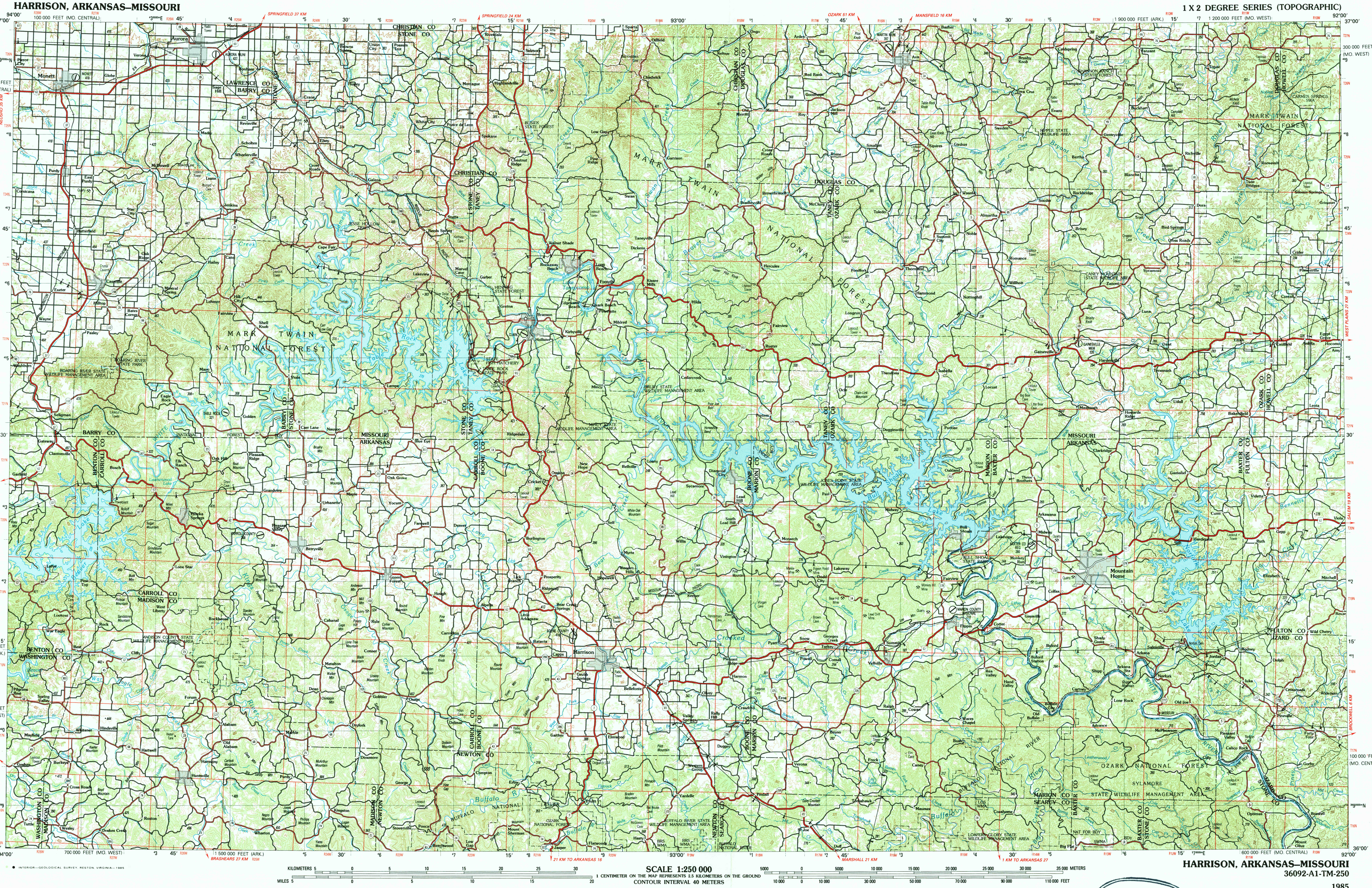
CONVERSION TABLE				ADJOINING MAPS		
Meters	Feet	Feet	Meters	1	2	3
1	3.2808	1	3.048			
2	6.5617	2	6.096			
3	9.8425	3	9.144			
4	13.1234	4	12.802	4		5
5	16.4042	5	15.240			
6	19.6850	6	18.288			
7	22.9659	7	21.336	6	7	8
8	26.2467	8	24.384			
9	29.5276	9	27.432			
10	32.8084	10	30.480			
To convert meters to feet multiply by 3.2808						
To convert feet to meters multiply by 0.3048						
				1	2	3
				4	5	6
				7	8	9
				10	11	12

FOR SALE BY U. S. GEOLOGICAL SURVEY  
DENVER, COLORADO 80225, OR RESTON, VIRGINIA 22092

## Topographic Map Symbols

- Dual highway, interchange
- Primary highway, hard surface
- Secondary highway, hard surface
- Light duty road, hard or improved surface
- Other road, trail
- Route marker: Interstate; U. S. State
- Bridge: overpass; underpass
- Tunnel: road; railroad
- Railroad: standard gauge; single, multiple track
- Railroad: narrow gauge; single, multiple track
- Build-up area; locality; elevation
- Airport: runway pattern known; unknown
- National boundary
- State boundary
- County boundary
- National or State reservation boundary
- Land grant boundary
- U. S. public lands survey: range, township (surveyed)
- U. S. public lands survey: range, township (protracted)
- Poweline; pipeline: aboveground, underground
- Dam; landmark feature; landmark building
- Well: water, other; spring; tank
- Cave; mine; quarry; oil platform
- Landmark area; landmark structure
- Distorted surface: strip mine, lava; sand
- Contours: index; intermediate; supplementary
- Bathymetric contours: index, intermediate
- Stream, lake: perennial; intermittent
- Rapids, large and small; falls, large and small
- Land subject to controlled inundation; marsh, swamp
- Woodland; orchard, vineyard

A pamphlet describing topographic maps is available on request



## HARRISON, ARKANSAS–MISSOURI

1 X 2 DEGREE SERIES (TOPOGRAPHIC)

SCALE 1:250 000  
1 CENTIMETER ON THE MAP REPRESENTS 2.5 KILOMETERS ON THE GROUND  
CONTOUR INTERVAL 40 METERS

## HARRISON, ARKANSAS–MISSOURI

36092-A1-TM-250

1985

