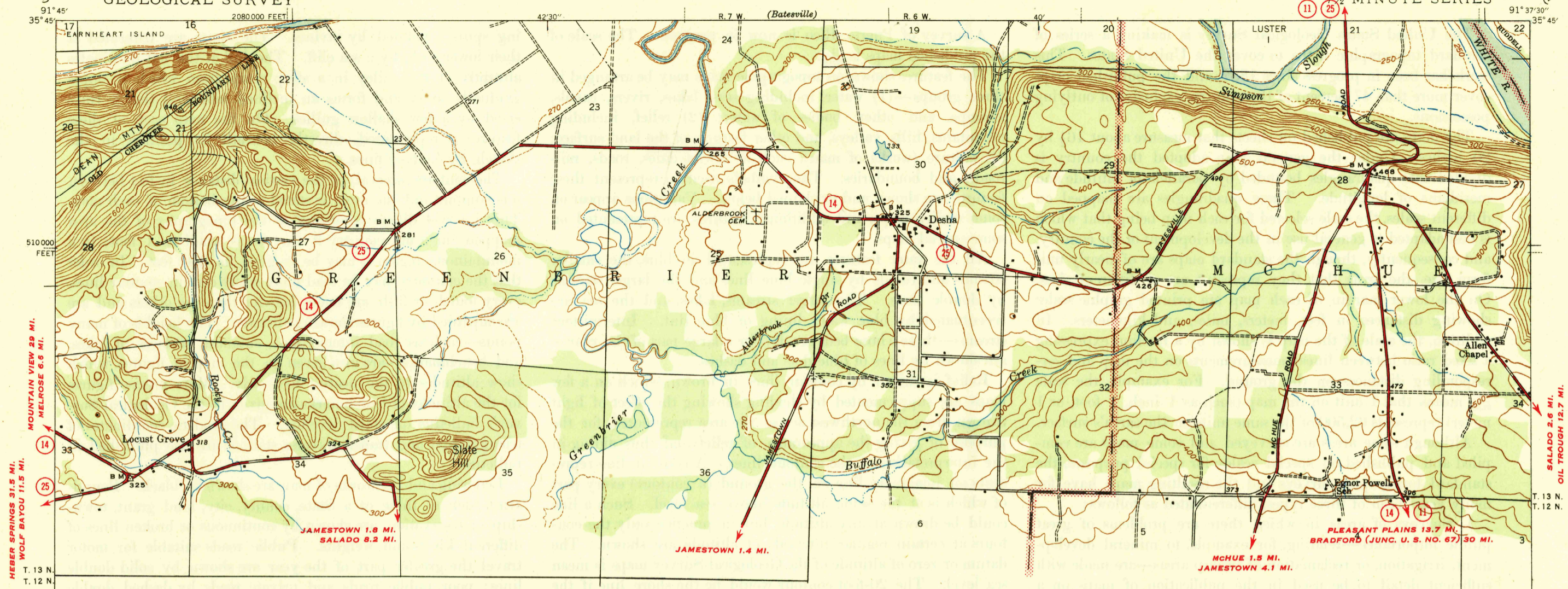


U. S. G. S.  
FILE COPY  
Inspection and Editing.

CAVE CITY (VIA STATE NO. 11) 15.5 MI.  
BATESVILLE 1.4 MI. ARKANSAS  
(INDEPENDENCE COUNTY)  
JAMESTOWN QUADRANGLE  
7 1/2-MINUTE SERIES

UNITED STATES  
DEPARTMENT OF THE INTERIOR  
GEOLOGICAL SURVEY

STATE OF ARKANSAS  
GEOLOGICAL SURVEY  
JOE W. KIMZEY, STATE GEOLOGIST

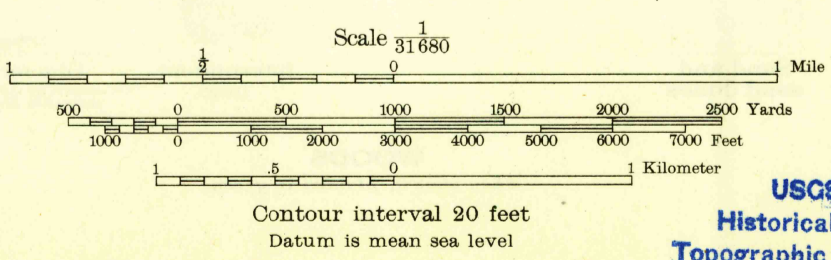


HERSER SPRINGS 91.5 MI.  
WOLF BAYOU 11.5 MI.  
MOUNTAIN VIEW 29 MI.  
MELROSE 6.6 MI.  
JAMESTOWN 1.8 MI.  
SALADO 8.2 MI.  
JAMESTOWN 1.4 MI.  
MCHUE 1.5 MI.  
JAMESTOWN 4.1 MI.  
PLEASANT PLAINS 13.7 MI.  
BRADFORD (JUNC. U. S. NO. 67) 30 MI.

THIS AREA IS SHOWN ON THE MAP OF BATESVILLE 30 MINUTE  
QUADRANGLE, SURVEYED IN 1890, SCALE 1:125,000

Mapped by the Geological Survey  
1942

TRUE NORTH  
MAGNETIC NORTH  
APPROXIMATE MEAN  
DECLINATION, 1942



ROUTES USUALLY TRAVELED  
HARD IMPERVIOUS SURFACES  
OTHER SURFACE IMPROVEMENTS  
U. S. ROUTE 1944  
STATE ROUTE

2110000 FEET  
91° 37' 30"  
Polyconic projection. 1927 North American datum  
5000 yard grid based on U. S. zone system, C  
10000 foot grid based on Arkansas (North)  
rectangular coordinate system

JAMESTOWN, ARK.  
Edition of 1945  
N3537.5-W9137.5/7.5

U. S. G. S.  
FILE COPY  
Inspection and Editing.

2185