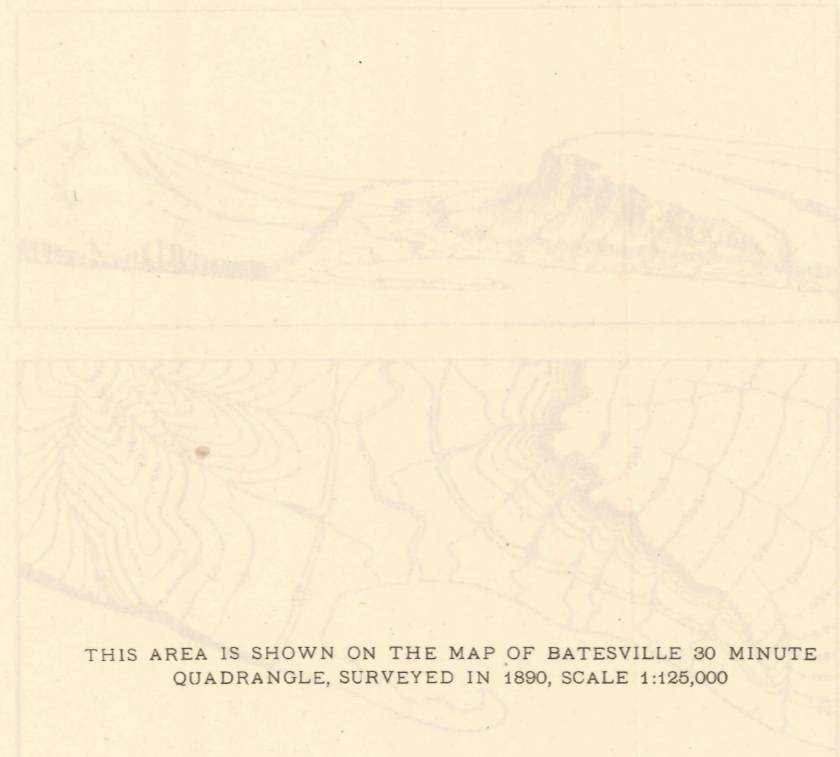
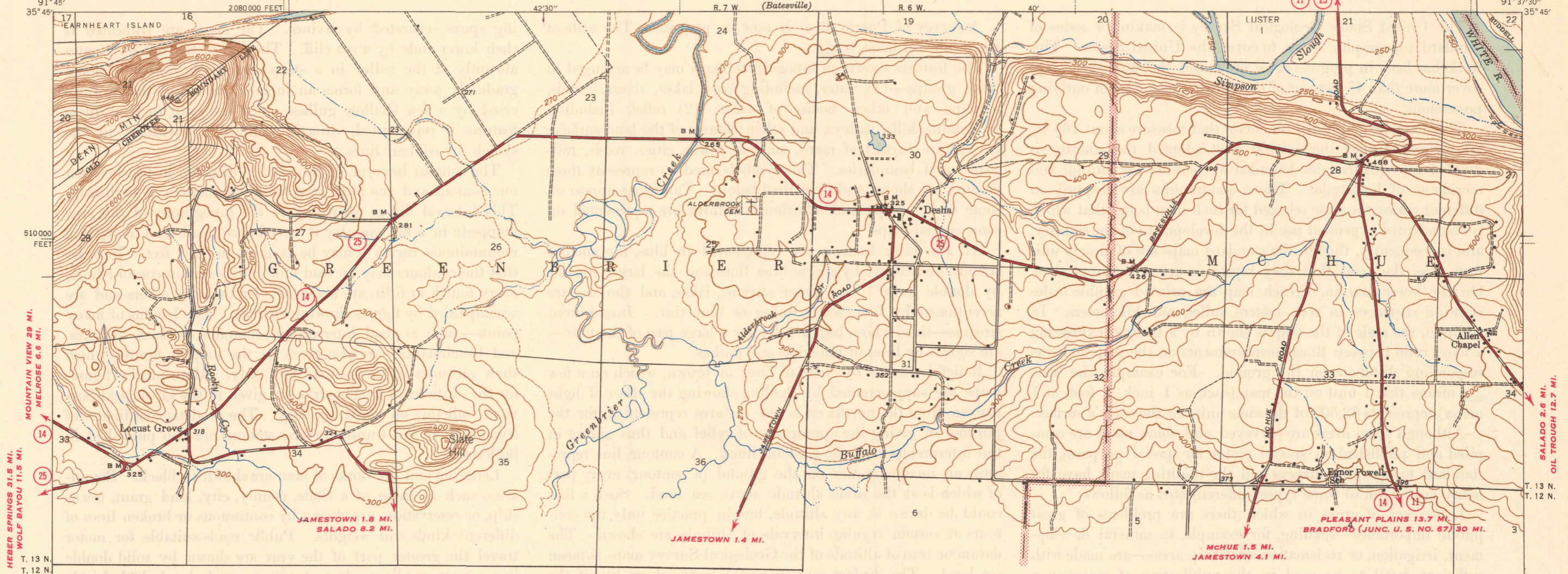


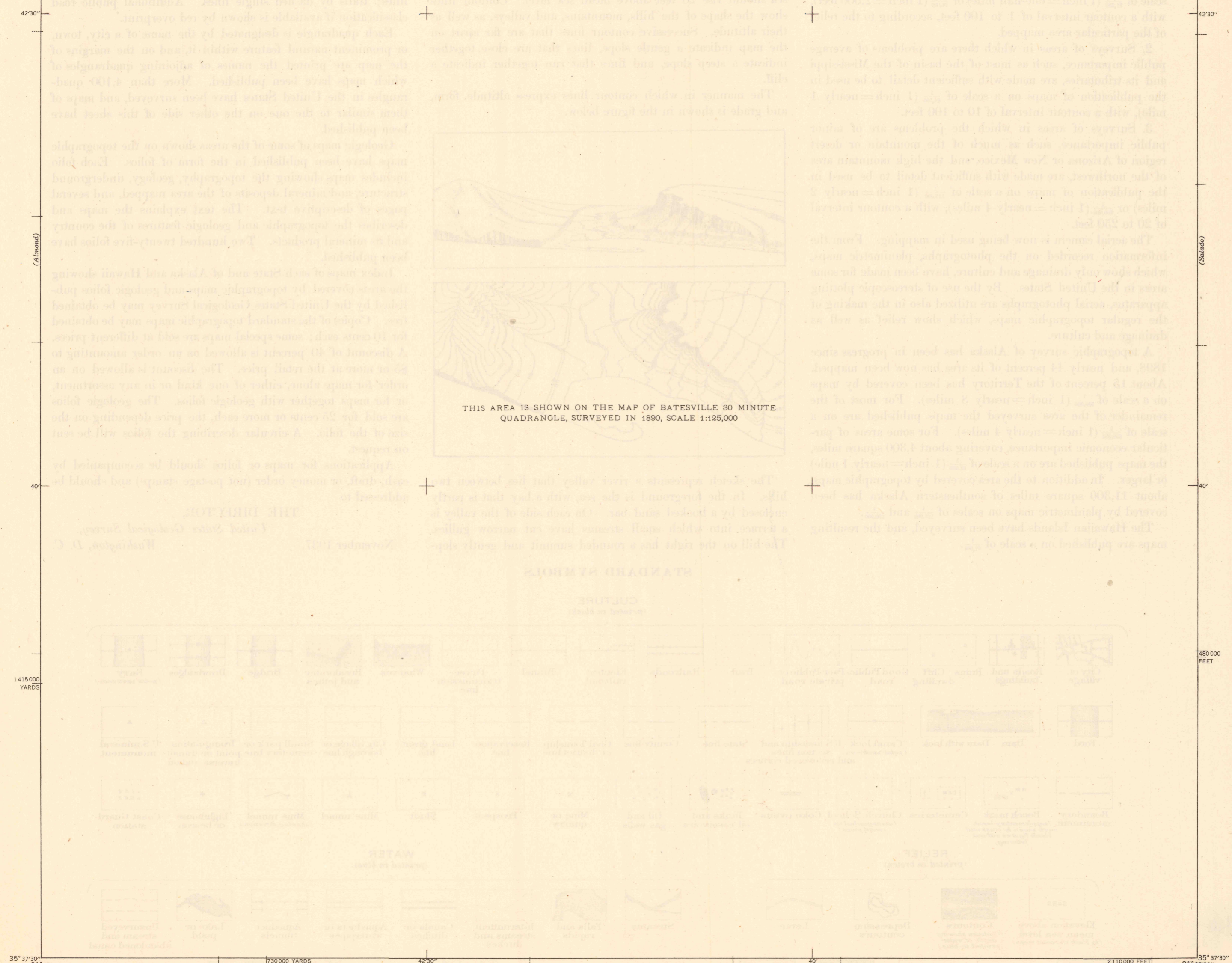
UNITED STATES
DEPARTMENT OF THE INTERIOR
GEOLOGICAL SURVEY

STATE OF ARKANSAS
GEOLOGICAL SURVEY
JOE W. KIMZEY, STATE GEOLOGIST

CAVE CITY (VIA STATE NO. 11) 18.5 MI.
BATESVILLE 1.4 MI. ARKANSAS
(INDEPENDENCE COUNTY)
JAMESTOWN QUADRANGLE
7 1/2-MINUTE SERIES



THIS AREA IS SHOWN ON THE MAP OF BATESVILLE 30 MINUTE
QUADRANGLE, SURVEYED IN 1890, SCALE 1:125,000



Mapped by the Geological Survey
1942

Scale 1:31680

0 500 1000 2000 3000 4000 5000 6000 7000 Feet

0 1 2 3 4 5 6 7 8 9 10 Kilometer

TRUE NORTH
MAGNETIC NORTH

APPROXIMATE MEAN
DECLINATION, 1942

Contour interval 20 feet
Datum is mean sea level

ROUTES USUALLY TRAVELED
HARD IMPERVIOUS SURFACES
OTHER SURFACE IMPROVEMENTS
U. S. ROUTE 1944 STATE ROUTE

Polyconic projection. 1927 North American datum
5000 yard grid based on U. S. zone system, C
10000 foot grid based on Arkansas (North)
rectangular coordinate system

JAMESTOWN, ARK.
Edition of 1945
N3537.5-W9137.5/7.5