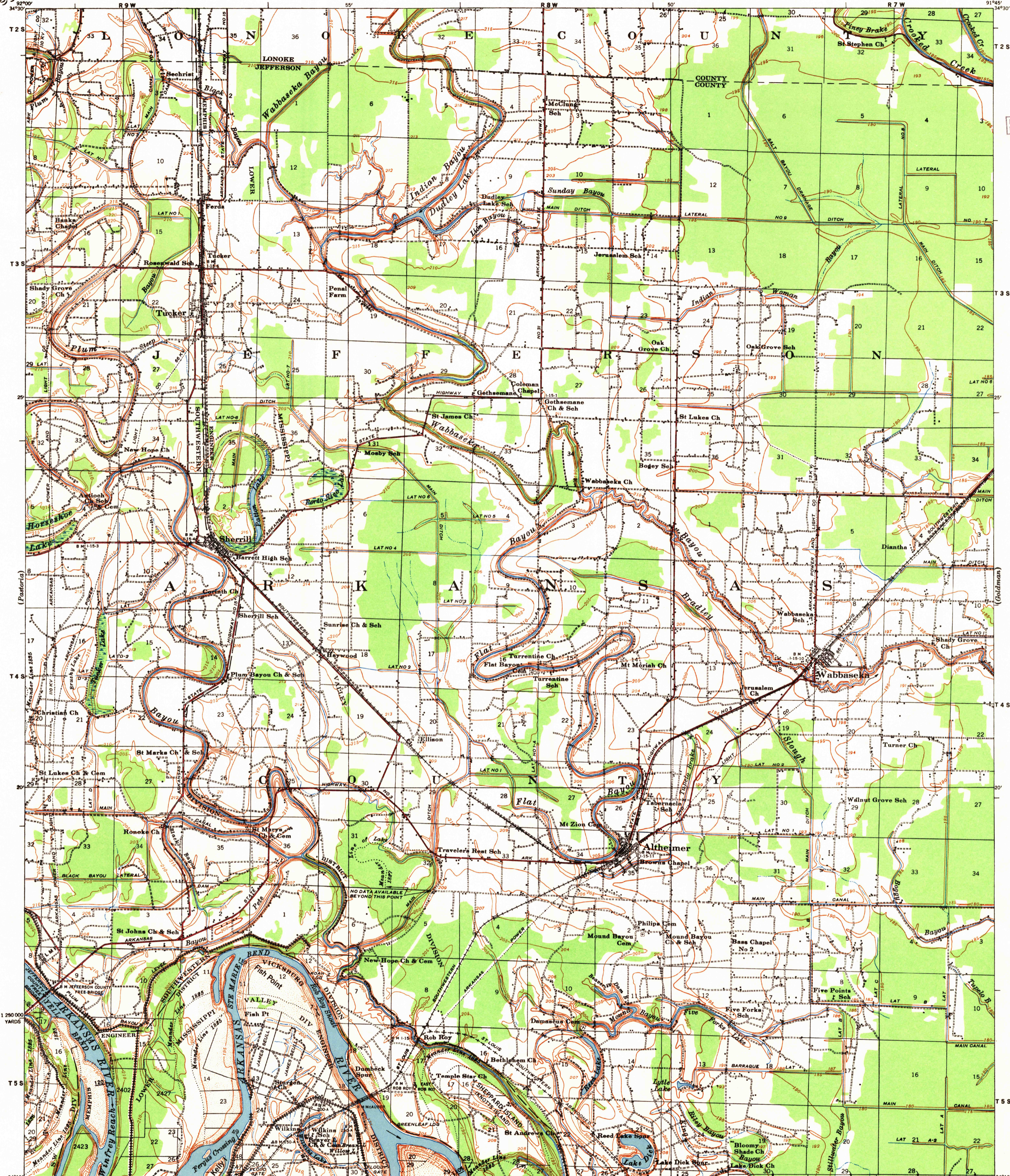
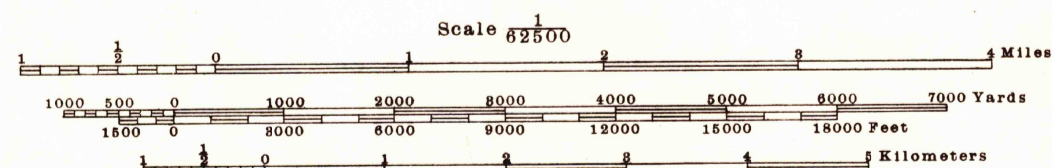


(Shaded)



U.S.G.S.
FILE COPY
TOPOGRAPHIC DIVISION

Prepared under the direction of the President, Mississippi River Commission.
Horizontal control by Corps of Engineers, U. S. Army, Memphis and Vicksburg Districts and U. S. C. & G. S.
Vertical control by Corps of Engineers, U. S. Army, Memphis District.
Topography by Corps of Engineers, U. S. Army, Memphis District, 1930.
Revised by Mississippi River Commission, 1932-35.
Political boundaries are shown according to best available information and are subject to change except where established by court decision.
Boundary between Memphis and Vicksburg Engineer Districts is the right bank of the Arkansas River.
Boundary between Lower Mississippi Valley and Southwestern Divisions as shown.
Work under Flood Control Act of January, 1935.
Polyconic Projection, North American Datum.



Datum is mean gulf level at Biloxi, Mississippi. Elevations differ from mean sea level elevations as determined by the U. S. Coast and Geodetic Survey, by small fractions of a foot. Persons interested may secure elevations of bench marks as determined by the latest U. S. C. & G. S. adjustment, by applying to the U. S. Coast and Geodetic Survey.
FIVE THOUSAND YARD GRID COMPUTED FROM "GRID SYSTEM FOR PROGRESSIVE MAPS IN THE U. S." - ZONE G, U. S. C. & G. S. SPECIAL PUBLICATION NO. 88

Additional copies may be procured from
The President, Mississippi River Commission,
Vicksburg, Miss. 20 cents per copy

PRINTED BY ARMY MAP SERVICE, CORPS OF ENGINEERS, 9-54, 101006

LEGEND

Levee	-----	Levee mile post	LMP
Retards and dikes	--- ---	Levee station	LS
Revetment		Towhead	TH
River Gage	g		

APPROXIMATE MEAN DECLINATION 1930 ANNUAL MAGNETIC CHANGE 1" DECREASE
Distances above mouth of Arkansas River are shown at 5 mile intervals.

HARD IMPERVIOUSLY SURFACED ROADS
OTHER MAIN TRAVELED ROADS, GRAVEL

U.S.G.S.
FILE COPY
TOPOGRAPHIC DIVISION

ALTHEIMER, ARK.
EDITION OF 1935
Printed for G.S. by A.M.S
OCT 20 1954
(1000)