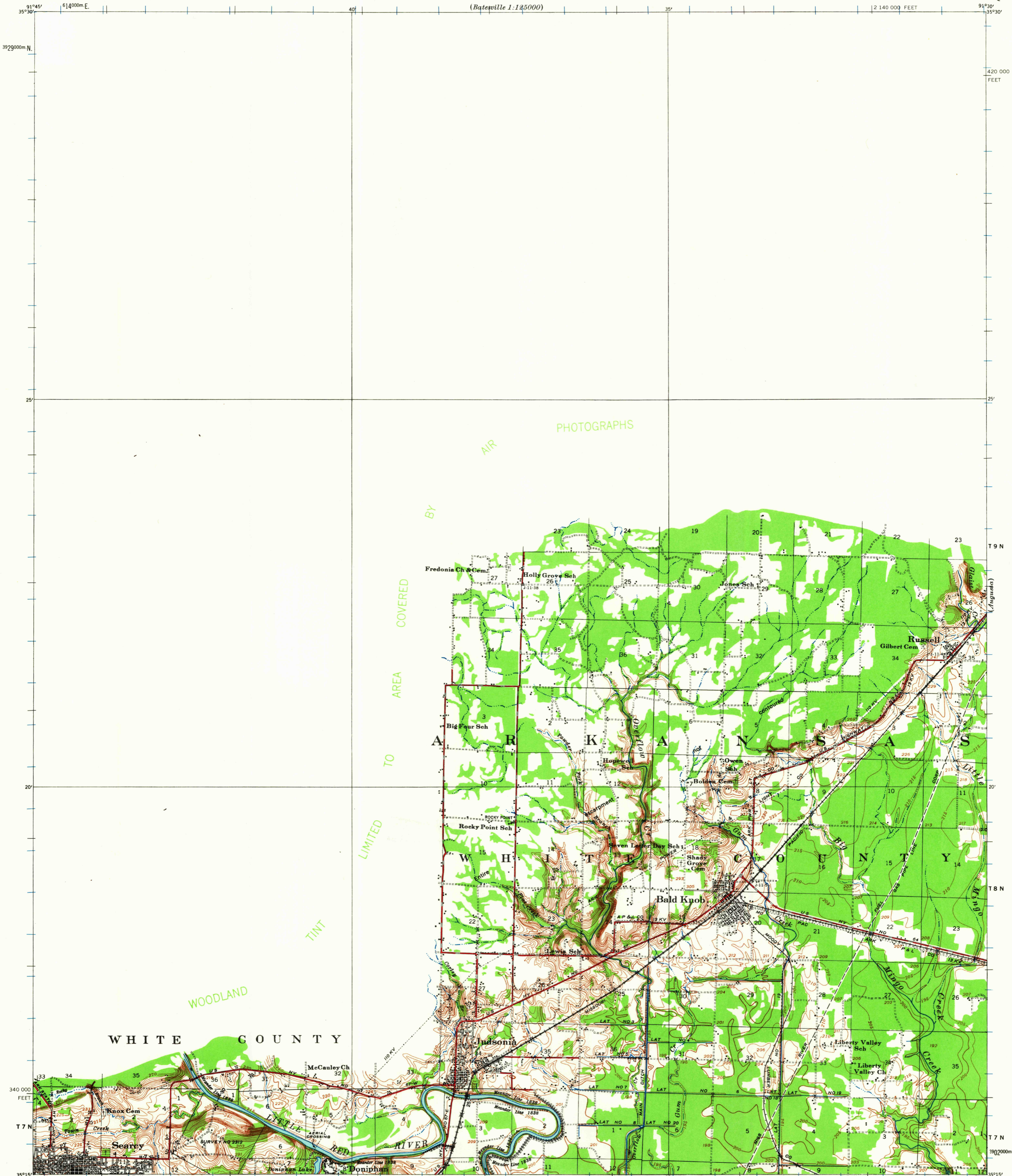


(Batesville 1:125000)

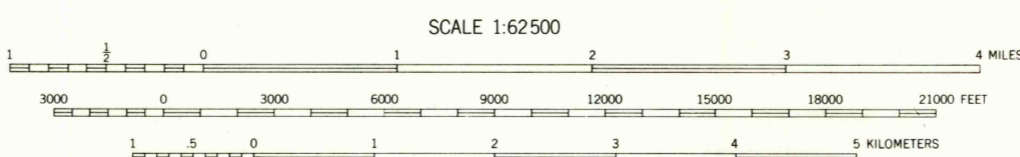
2 140 000 FEET



BY AIR PHOTOGRAPHS  
TO AREA COVERED BY LIMITED TINT

Prepared under the direction of the President, Mississippi River Commission.  
Horizontal control by Corps of Engineers, U. S. Army, Memphis District.  
Vertical control by Corps of Engineers, U. S. Army, Memphis District.  
Topography by Corps of Engineers, U. S. Army, Memphis District, 1931.  
Area outside Alluvial Valley taken from aerial photographs and is not contoured.  
Revised by Mississippi River Commission, 1932-35  
Political boundaries are shown according to best available information,  
and are subject to change except where established by court decision.  
Polyconic Projection, North American Datum.

TRUE NORTH  
MAGNETIC NORTH  
APPROXIMATE MEAN  
DECLINATION, 1935



Contour interval 5 feet

Datum is mean gulf level at Biloxi, Mississippi. Elevations differ from mean sea level elevations as determined by the U. S. Coast and Geodetic Survey by small fractions of a foot. Persons interested may secure elevations of bench marks as determined by the latest U. S. C. & G. S. adjustment, by applying to the U. S. Coast and Geodetic Survey.

10,000-FOOT GRID TICKS, ARKANSAS PLANE COORDINATE SYSTEM, NORTH ZONE, SHOWN IN BLACK  
1000-METER GRID TICKS, UNIVERSAL TRANSVERSE MERCATOR SYSTEM, ZONE 15, SHOWN IN BLUE

FOR SALE BY U. S. GEOLOGICAL SURVEY, DENVER 25, COLORADO OR WASHINGTON 25, D. C.,  
ARKANSAS GEOLOGICAL AND CONSERVATION COMMISSION, LITTLE ROCK, ARKANSAS,  
AND MISSISSIPPI RIVER COMMISSION, VICKSBURG, MISSISSIPPI  
A FOLDER DESCRIBING TOPOGRAPHIC MAPS AND SYMBOLS IS AVAILABLE ON REQUEST

USCS  
Historical File  
Topographic Division

LEGEND		
Levee	-----	Levee mile post LMP
Retards and dikes		Levee station L.S.
Revetment		Towhead T.H.
River Gage	o	

Distances above mouth of Little Red River are shown at 5 mile intervals

HARD IMPERVIOUSLY SURFACED ROADS  
OTHER MAIN TRAVELED ROADS, GRAVEL

BALD KNOB, ARK.  
EDITION OF 1935  
N3515-W9130/15

940

NOV 14 1963