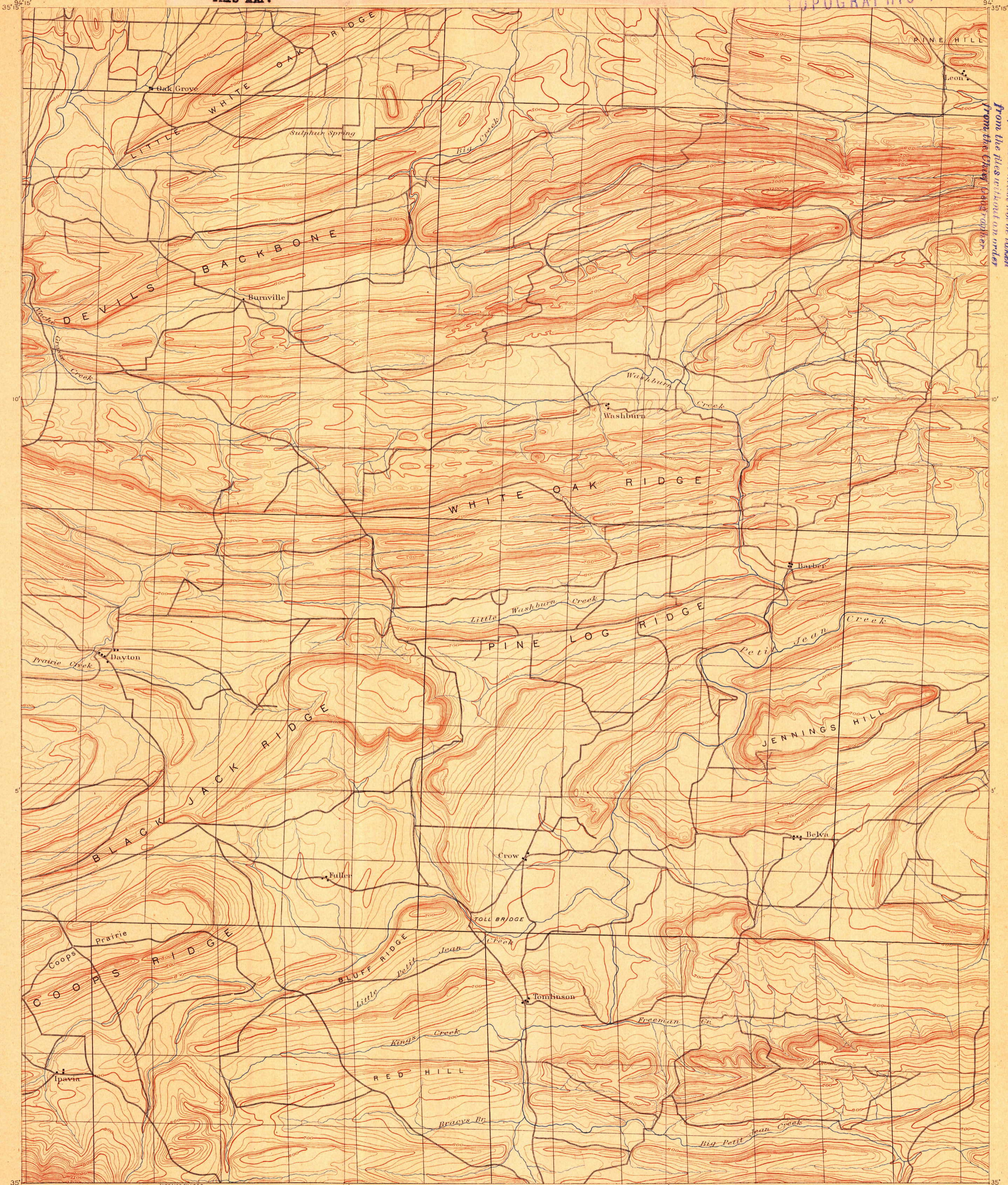


U.S. GEOLOGICAL SURVEY
J.W. POWELL, DIRECTOR.

S. C. This map was made and published by the Geological Survey of Arkansas. Later the U. S. Geological Survey embodied this work, but on different scale and contour interval, into their regular published *Atlas sheet.* THE SURVEY HAS NO MORE COPIES OF THIS MAP.

8647 BARBER
U.S. GEOLOGICAL SURVEY
TOPOGRAPHIC FILE



RETIRED COPY
This sheet must not be taken
from the files without an order

Henry Gannett, Chief Topographer.
Triangulation by S.S. Gannett.
Topography by the Geol. Survey of Arkansas.

Scale 1/62,500
Contour Interval 20 feet

USGS
Historical File
Topographic Division
Barber, Ark.

Washburn #16P FEB 26 1900