

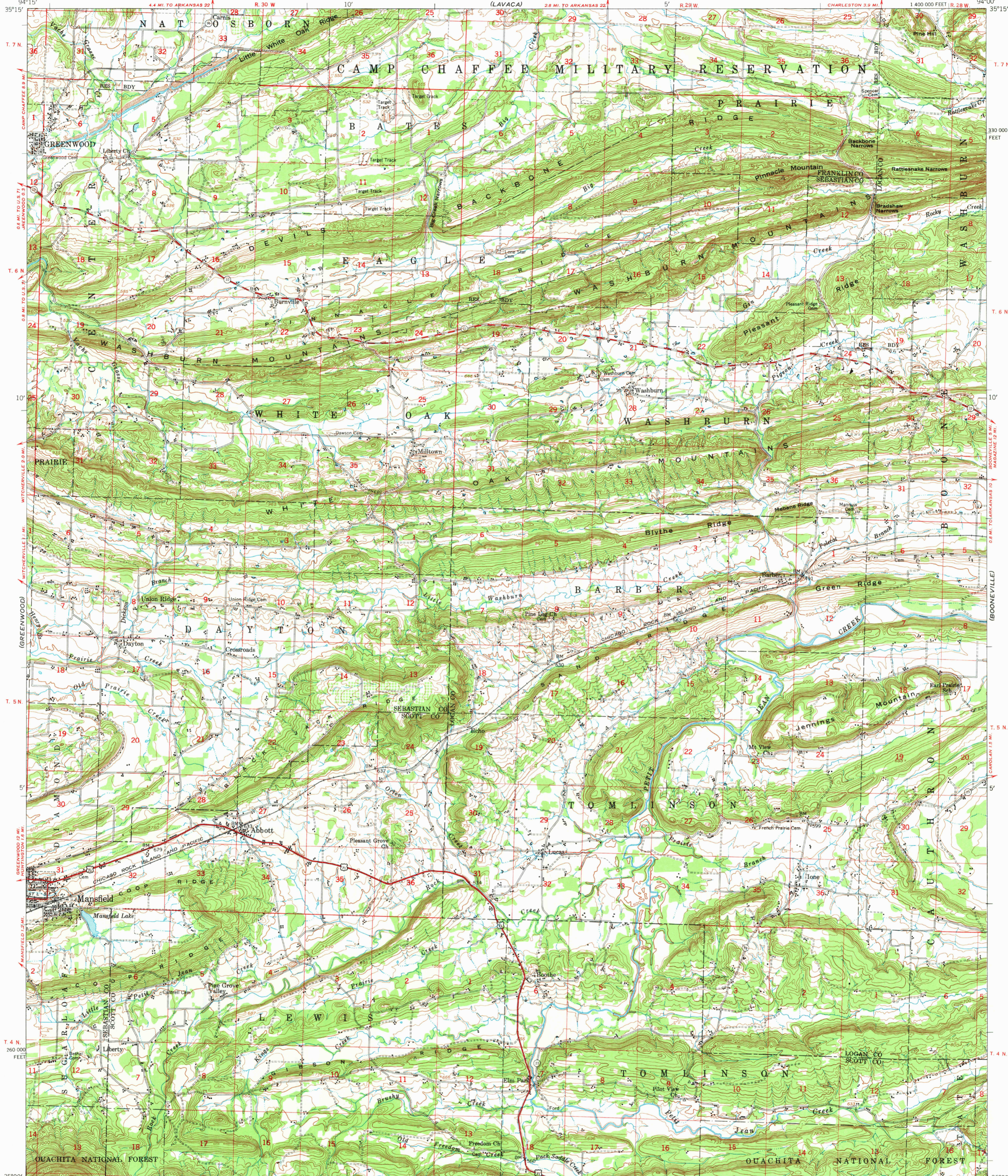
(VAN BUREN)

(MAGAZINE MTN)
1:250,000

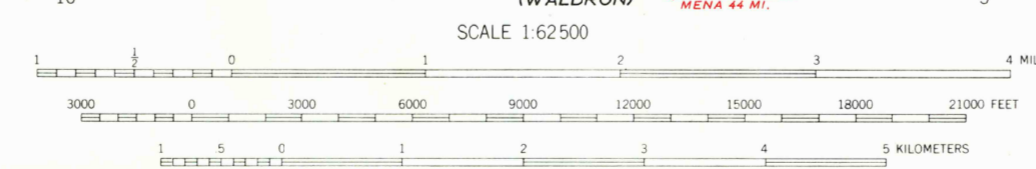
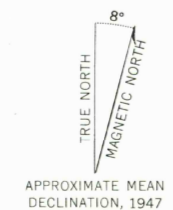
UNITED STATES
DEPARTMENT OF THE INTERIOR
GEOLOGICAL SURVEY

UNITED STATES
DEPARTMENT OF THE ARMY
CORPS OF ENGINEERS

BARBER QUADRANGLE
ARKANSAS
15 MINUTE SERIES (TOPOGRAPHIC)



Mapped by the Army Map Service
Published for civil use by the Geological Survey
Control by USCE, USGS, and USC&GS
Topography from aerial photographs by multiplex and photo-planimetric methods
Aerial photographs taken 1946. Field check 1947
Polyconic projection. 1927 North American datum
10,000-foot grid based on Arkansas coordinate system, north zone
No distinction is made between barns, dwellings, commercial and industrial buildings
Unchecked elevations are shown in brown



ROAD CLASSIFICATION

Heavy-duty	4 LANE 16 LANE	Light-duty
Medium-duty	4 LANE 16 LANE	Unimproved dirt
U.S. Route		State Route



THIS MAP COMPLIES WITH NATIONAL MAP ACCURACY STANDARDS
FOR SALE BY U. S. GEOLOGICAL SURVEY, FEDERAL CENTER, DENVER, COLORADO OR WASHINGTON 25, D. C.
AND BY THE ARKANSAS RESOURCES AND DEVELOPMENT COMMISSION, LITTLE ROCK, ARKANSAS
A FOLDER DESCRIBING TOPOGRAPHIC MAPS AND SYMBOLS IS AVAILABLE ON REQUEST

RETURN TO:
NWD HISTORICAL MAP ARCHIVES
USGS NATIONAL CENTER, MS-522
RESTON, VA 22092

BARBER, ARK.
N3500-W9400/15
1947

(POTEAU MOUNTAIN)
1:250,000

(MOUNT DAVID)
1:250,000