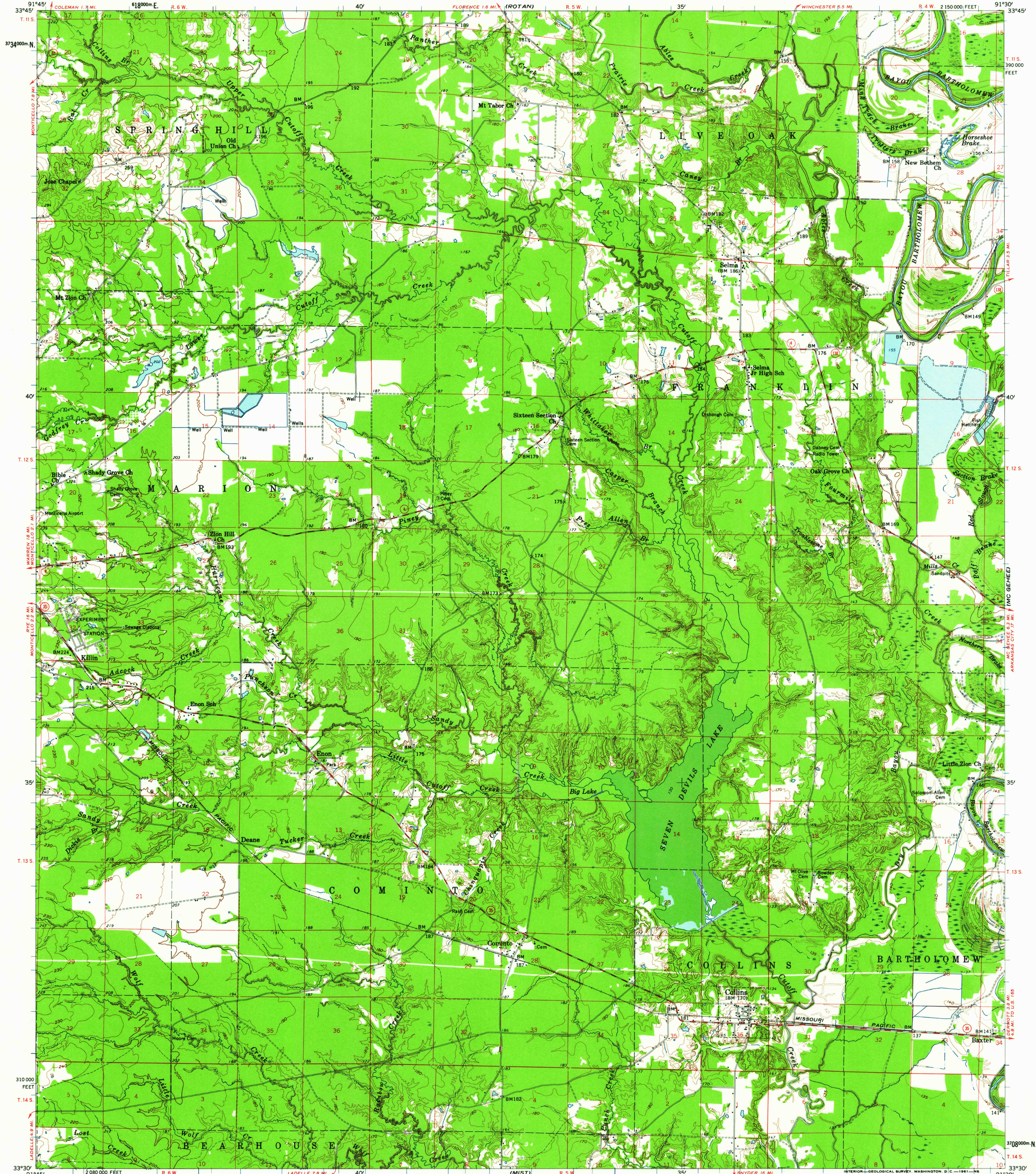


UNITED STATES  
DEPARTMENT OF THE INTERIOR  
GEOLOGICAL SURVEY

COLLINS QUADRANGLE  
ARKANSAS—DREW CO.  
15 MINUTE SERIES (TOPOGRAPHIC)



Mapped, edited, and published by the Geological Survey  
Control by USGS, USC&GS, and USCE  
Compiled in 1961 from 1:24 000-scale maps of  
Selma, Collins NW, Cominto, and Collins  
7.5 minute quadrangles, surveyed 1960  
Topography from aerial photographs by photogrammetric methods  
and by planimetric surveys. Aerial photographs taken 1959-1960  
Polyconic projection. 1927 North American datum  
10,000-foot grid based on Arkansas coordinate system, south zone  
1000-meter Universal Transverse Mercator grid ticks,  
zone 15, shown in blue

TRUE NORTH  
MAGNETIC NORTH  
APPROXIMATE MEAN  
DECLINATION, 1960

SCALE 1:62 500  
1 2 3 4 5 6 7 8 9 10 11 12 13 14 15 16 17 18 19 20 21 22 23 24 25 26 27 28 29 30 31 32 33 34 35 36 37 38 39 40  
3000 6000 9000 12000 15000 18000 21000 FEET  
1 2 3 4 5 6 7 8 9 10 11 12 13 14 15 16 17 18 19 20 21 22 23 24 25 26 27 28 29 30 31 32 33 34 35 36 37 38 39 40  
3000 6000 9000 12000 15000 18000 21000 METERS  
CONTOUR INTERVAL 10 FEET  
DOTTED LINES REPRESENT 5-FOOT CONTOURS  
DATUM IS MEAN SEA LEVEL

THIS MAP COMPLIES WITH NATIONAL MAP ACCURACY STANDARDS  
FOR SALE BY U. S. GEOLOGICAL SURVEY, DENVER 25, COLORADO OR WASHINGTON 25, D. C.  
AND BY THE ARKANSAS GEOLOGICAL AND CONSERVATION COMMISSION, LITTLE ROCK, ARKANSAS  
A FOLDER DESCRIBING TOPOGRAPHIC MAPS AND SYMBOLS IS AVAILABLE ON REQUEST

USGS  
Historical File  
Topographic Division



ROAD CLASSIFICATION  
Medium-duty ——— Light-duty ———  
Unimproved dirt ———  
State Route  
This area also covered by 1:24 000-scale maps of  
Selma, Collins NW, Cominto, and Collins  
7.5 minute quadrangles, surveyed 1960  
COLLINS, ARK.  
N 3330—W 9130/15  
1960

USGS  
FILE COPY  
TOPOGRAPHIC DIVISION

JUL 14 1961

2035