

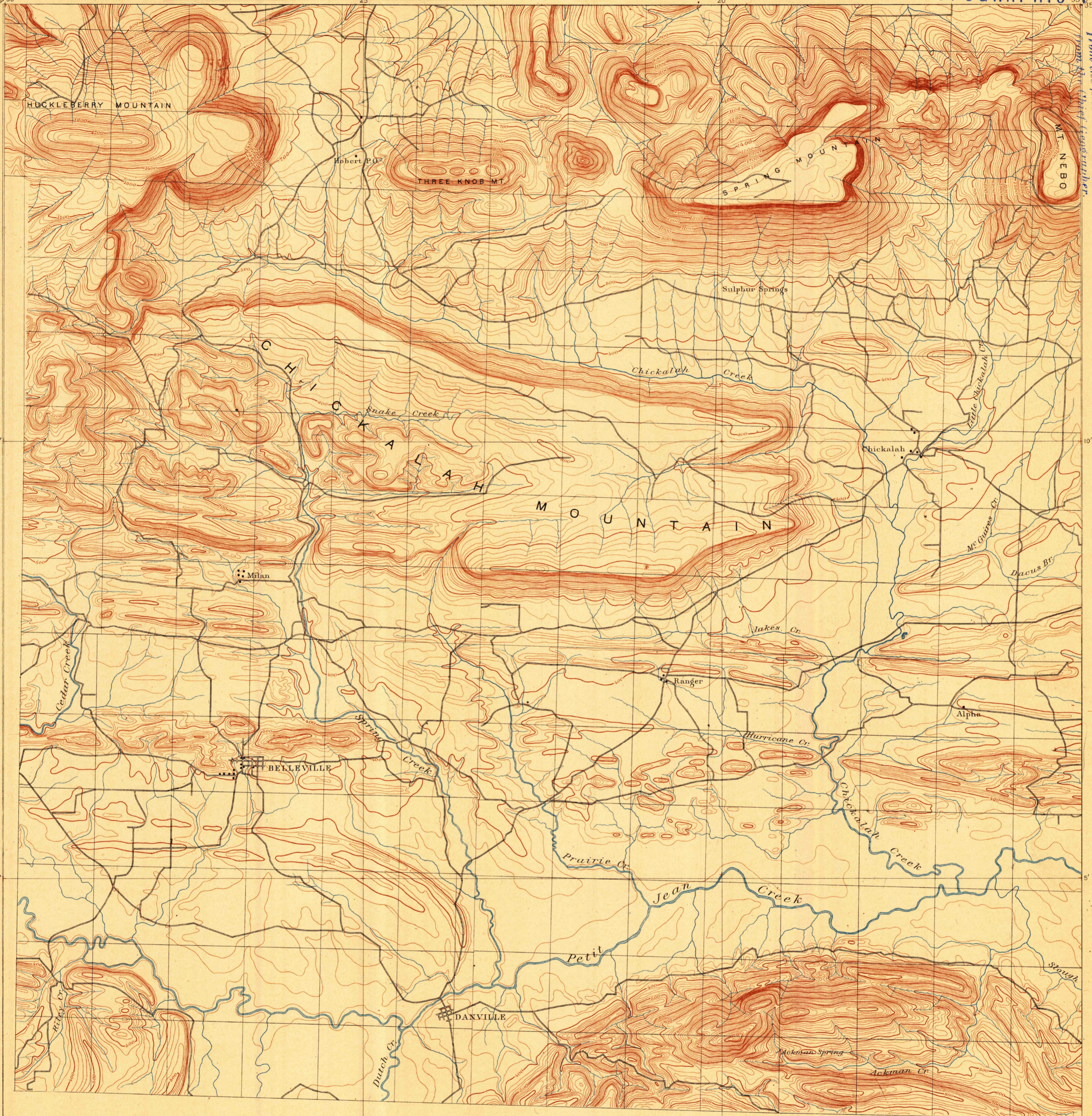
S. H. part of Dardanelle quadrangle, Arkansas.
This map was made and published by the Geological Survey of
Arkansas. Later the U. S. Geological Survey embodied this work, but
on different scale and contour interval, into their regular published
Dardanelle atlas sheet. THE SURVEY HAS NO MORE COPIES OF
THIS MAP.

74 Dardanelle 703

U.S. GEOLOGICAL SURVEY
J.W. POWELL, DIRECTOR.

U. S. GEOLOGICAL SURVEY
TOPOGRAPHIC FILES

RETAINED COPY
This sheet must not be taken
from the files without an order



Henry Gannett, Chief Topographer.
Triangulation by S.S. Gannett.
Topography by the Geol. Survey of Arkansas.

Scale 1:50,000
Contour Interval 20 feet

USGS
Historical File
Graphic Division

Belleville Danville #19P
FEB 26 1900
Dardanelle #3
SURVEYED 1888