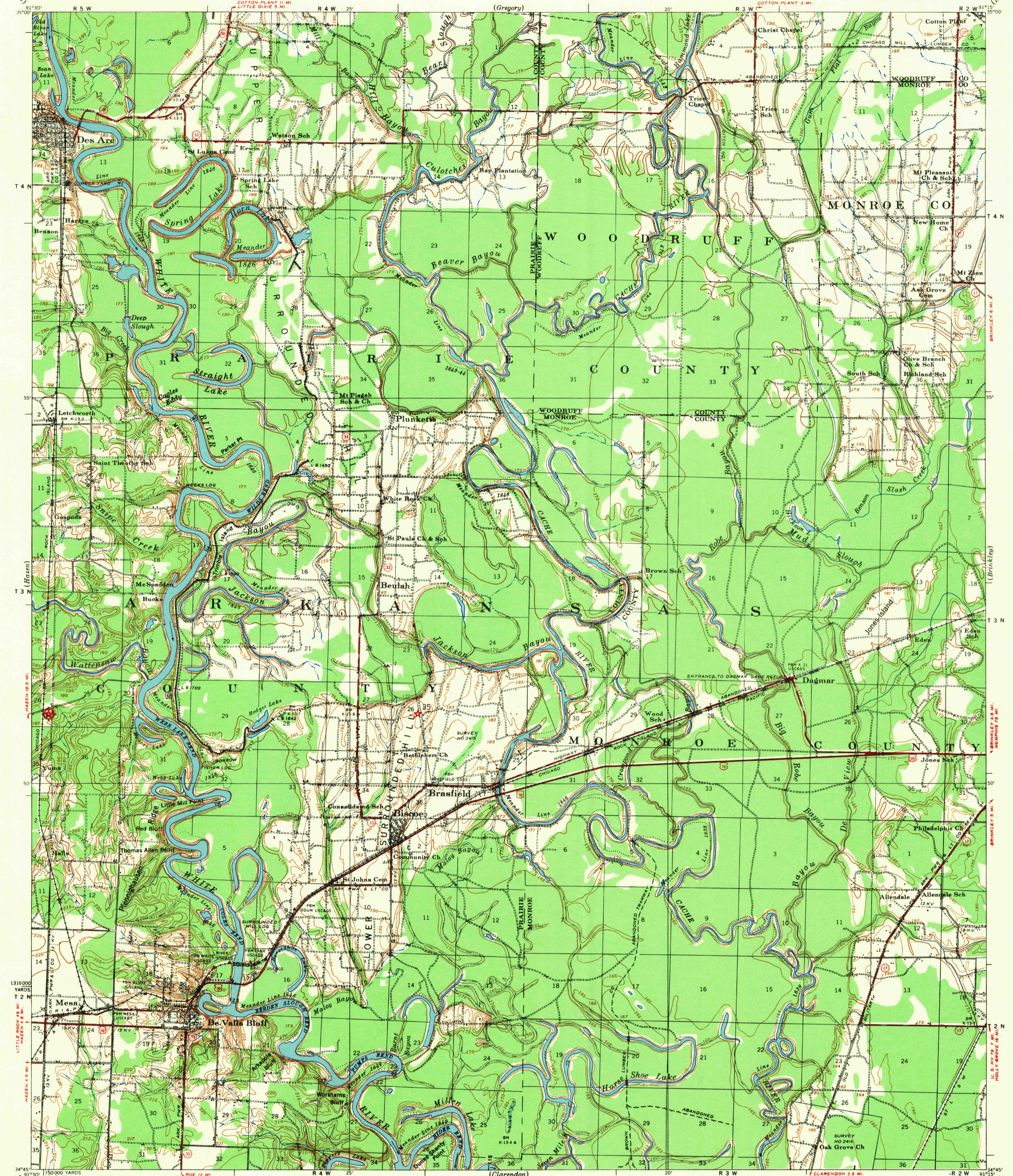
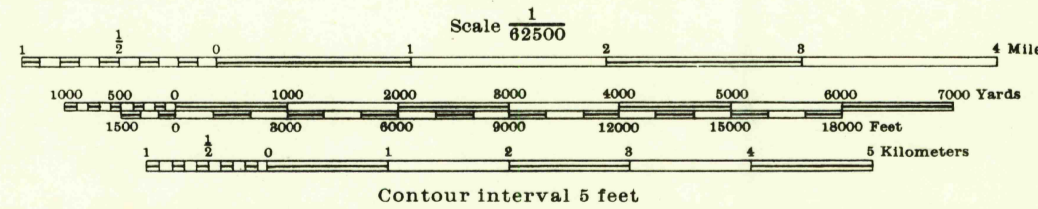


ARKANSAS
DE VALLS BLUFF QUADRANGLE
GRID ZONE "C"

WAR DEPARTMENT
CORPS OF ENGINEERS



Prepared under the direction of the President, Mississippi River Commission.
Horizontal control by Mississippi River Commission and Corps of Engineers,
U. S. Army, Memphis District and U. S. C. & G. S.
Vertical control by Mississippi River Commission and Corps of Engineers,
U. S. Army, Memphis District.
Descriptions, elevations and geodetic positions of bench marks may be
obtained from Memphis Engineer District, Memphis, Tenn.
Topography by Corps of Engineers, U. S. Army, Memphis District, 1930-41.
Revised by Mississippi River Commission, 1932, 1933, 1935 and 1941.
Political boundaries are shown according to best available information
and are subject to change except where established by court decision.
Work under flood control Act shown as of December, 1941.
Polyconic Projection, North American Datum.



Datum is mean gulf level at Biloxi, Mississippi. Elevations differ from mean sea level elevations as determined
by the U. S. Coast and Geodetic Survey, by small fractions of a foot. Persons interested may secure elevations of bench
marks as determined by the latest U. S. C. & G. S. adjustment, by applying to the U. S. Coast and Geodetic Survey.
FIVE THOUSAND YARD GRID COMPUTED FROM "GRID SYSTEM FOR PROGRESSIVE MAPS"
IN THE U. S. ZONE C. U. S. C. & G. S. SPECIAL PUBLICATION NO. 99

Additional copies may be procured from
The President, Mississippi River Commission,
Vicksburg, Miss. 20 cents per copy

PRINTED BY ARMY MAP SERVICE, CORPS OF ENGINEERS, 9-54. 101014

LEGEND

Levee	Retards and dikes	Revetment	River Gage	Levee mile post	Levee station	Towhead	LMP	LS	TH
-------	-------------------	-----------	------------	-----------------	---------------	---------	-----	----	----

APPROXIMATE MEAN DECLINATION 1935
ANNUAL MAGNETIC CHANGE 2' INCREASE
Distances above mouth of White River are shown at 5 mile intervals.
ROUTES USUALLY TRAVELED
HARD IMPERVIOUS SURFACES
OTHER SURFACE IMPROVEMENTS
U. S. ROUTE STATE ROUTE

U.S.G.S.
FILE COPY
TOPOGRAPHIC DIVISION

DE VALLS BLUFF, ARK.

EDITION OF 1941

N3445-W9115/15

SEP 15 1957

U.S.G.S.
FILE COPY
TOPOGRAPHIC DIVISION

USGS
Historical File
Topographic Division

2000