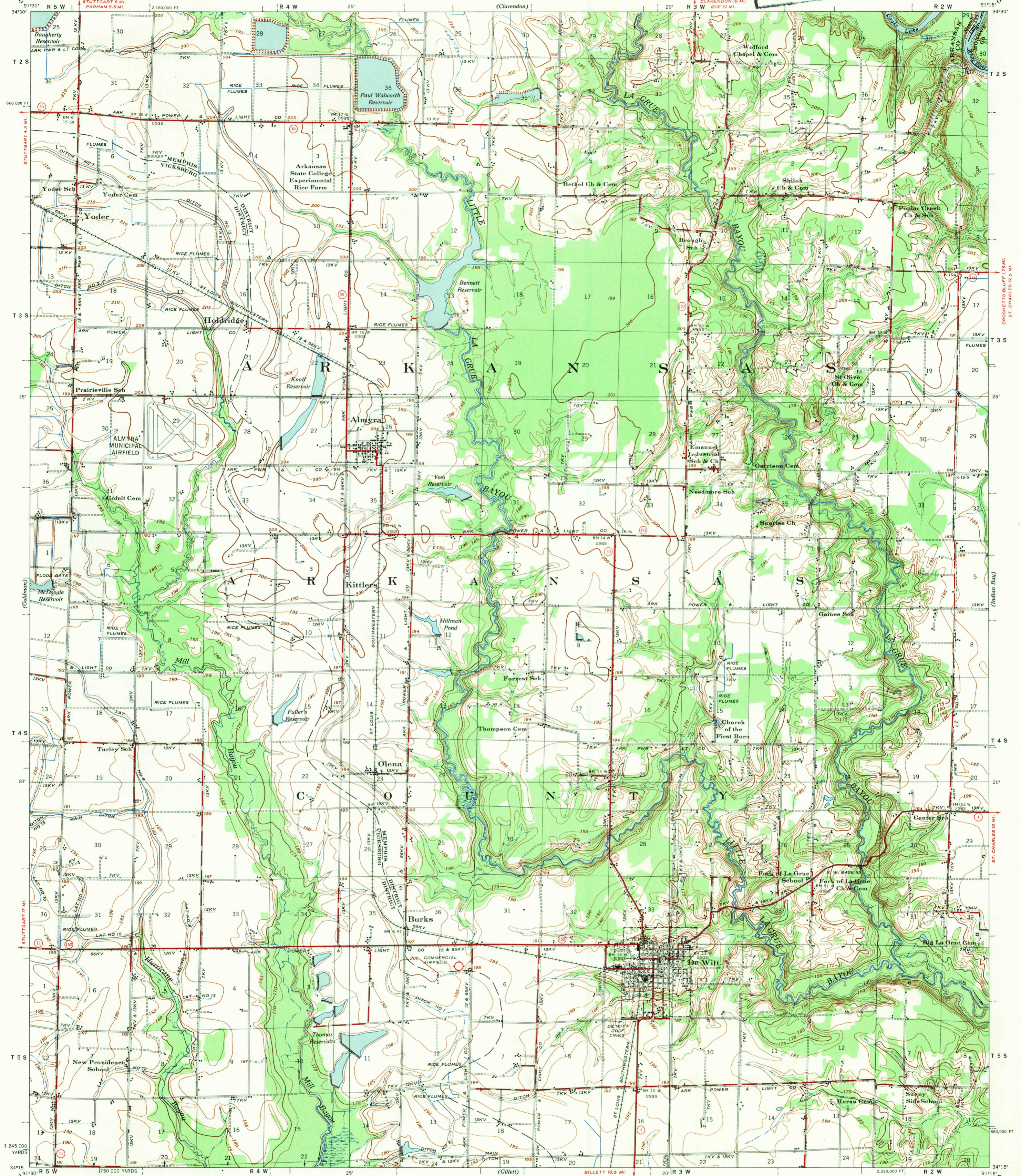


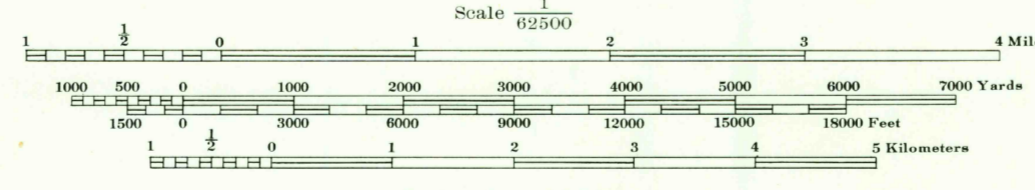
U.S. ARMY  
FILE COPY  
Inspection and Editing.

ARKANSAS  
DE WITT QUADRANGLE  
GRID ZONE "C"

CORPS OF ENGINEERS  
U. S. ARMY



Prepared under the direction of the President, Mississippi River Commission. Horizontal control by Mississippi River Commission and Corps of Engineers, U. S. Army, Memphis District and U. S. Coast and Geodetic Survey. Vertical control by Mississippi River Commission and Corps of Engineers, U. S. Army, Memphis District. Descriptions, elevations, and geodetic positions of bench marks may be obtained from the Memphis District, Corps of Engineers, U. S. Army, Memphis, Tenn. Topography by Corps of Engineers, U. S. Army, Memphis District, 1931-49. Planimetry remapped from aerial photographs flown in 1946 and 1949. Political boundaries are shown according to best available information. Work under Flood Control Act shown as of Oct., 1949. Polyconic Projection, 1927 North American Datum.



Datum is mean sea level. Persons interested may secure elevations of bench marks as determined by the latest U. S. C. & G. S. adjustments, by applying to the U. S. Coast and Geodetic Survey. FIVE THOUSAND YARD GRID COMPUTED FROM "GRID SYSTEM FOR PROGRESSIVE MAPS IN THE U. S. ZONE C, U. S. C. & G. S. SPECIAL PUBLICATION NO. 98. THE STATE GRIDS FOR ARKANSAS SOUTH ZONE ARE INDICATED BY Ticks OUTSIDE THE NEATLINE AT 16,000 FOOT INTERVALS.

PRINTED BY ARMY MAP SERVICE, CORPS OF ENGINEERS, 2-54 702226  
LEGEND  
Levee Retards and dikes Revetment River Gage  
Levee mile post Levee station Towhead  
LMP L6 TH  
APPROXIMATE MEAN DECLINATION 1945 ANNUAL MAGNETIC CHANGE 0.5" INCREASE  
Distances on White River are shown at 5 mile intervals.

USCS  
Historical File  
Topographic Division

U.S. ARMY  
FILE COPY  
Inspection and Editing.

DE WITT, ARKANSAS  
EDITION OF 1954  
N3415-W9115:15

Additional copies may be procured from The President, Mississippi River Commission Vicksburg, Miss. 20 cents per copy

Feb. 18 1954  
(2500)