

(SALLISAW 1:25000)
(WINNING STAR) 1:25000

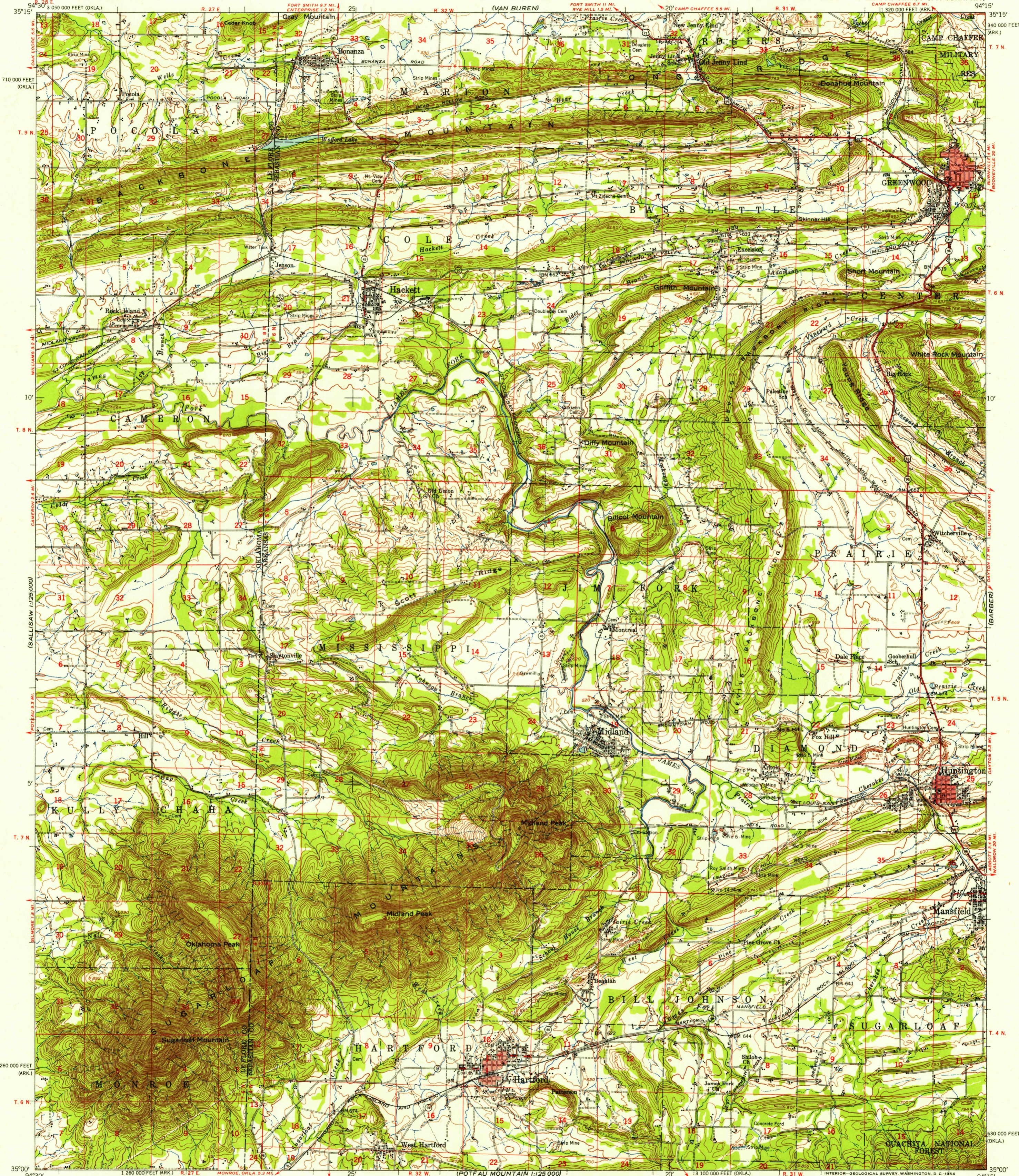
UNITED STATES
DEPARTMENT OF THE INTERIOR
GEOLOGICAL SURVEY

UNITED STATES
DEPARTMENT OF THE ARMY
CORPS OF ENGINEERS

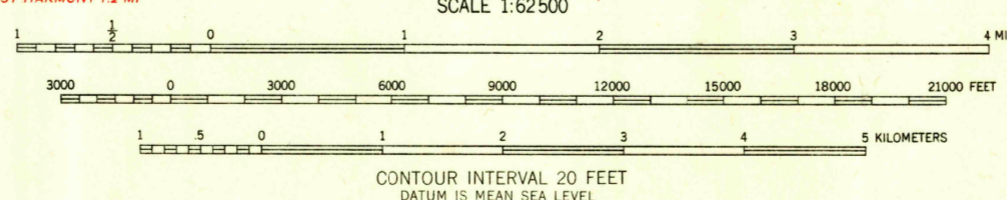
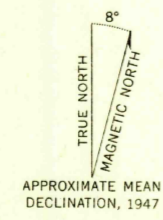
USGS
FILE COPY
TOPOGRAPHIC DIVISION

GREENWOOD QUADRANGLE
ARKANSAS-OKLAHOMA
15 MINUTE SERIES (TOPOGRAPHIC)
CAMP CHAFFEE 6.7 MI.
1:320 000 FEET (ARK.)

(LAVACA)
(BARBER) 1:25000
(WALDRON)



Mapped by the Army Map Service
Published for civil use by the Geological Survey
Control by USCE, USGS, and USC&GS
Topography from aerial photographs by multiplex and
photo-planimetric methods
Aerial photographs taken 1946. Field check 1947
Polyconic projection. 1927 North American datum
10,000-foot grids based on Arkansas coordinate system,
north zone, and Oklahoma coordinate system, south zone
Red tint indicates areas in which only
landmark buildings are shown
No distinction is made between dwellings, barns,
commercial and industrial buildings
Unchecked elevations are shown in brown

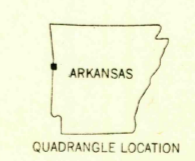


USGS
Historical File
Topographic Division

ROAD CLASSIFICATION

| | | |
|-------------|---------------|-----------------|
| Heavy-duty | 4 LANE 6 LANE | Light-duty |
| Medium-duty | 4 LANE 6 LANE | Unimproved dirt |

U.S. Route State Route



U.S.G.S.
FILE COPY
TOPOGRAPHIC DIVISION

GREENWOOD, ARK.-OKLA.
N3500-W9415/15
1947

THIS MAP COMPLIES WITH NATIONAL MAP ACCURACY STANDARDS
FOR SALE BY U. S. GEOLOGICAL SURVEY, FEDERAL CENTER, DENVER, COLORADO OR WASHINGTON 25, D. C.
AND BY THE ARKANSAS RESOURCES AND DEVELOPMENT COMMISSION, LITTLE ROCK, ARKANSAS
A FOLDER DESCRIBING TOPOGRAPHIC MAPS AND SYMBOLS IS AVAILABLE ON REQUEST

DEC 10 1954
2657