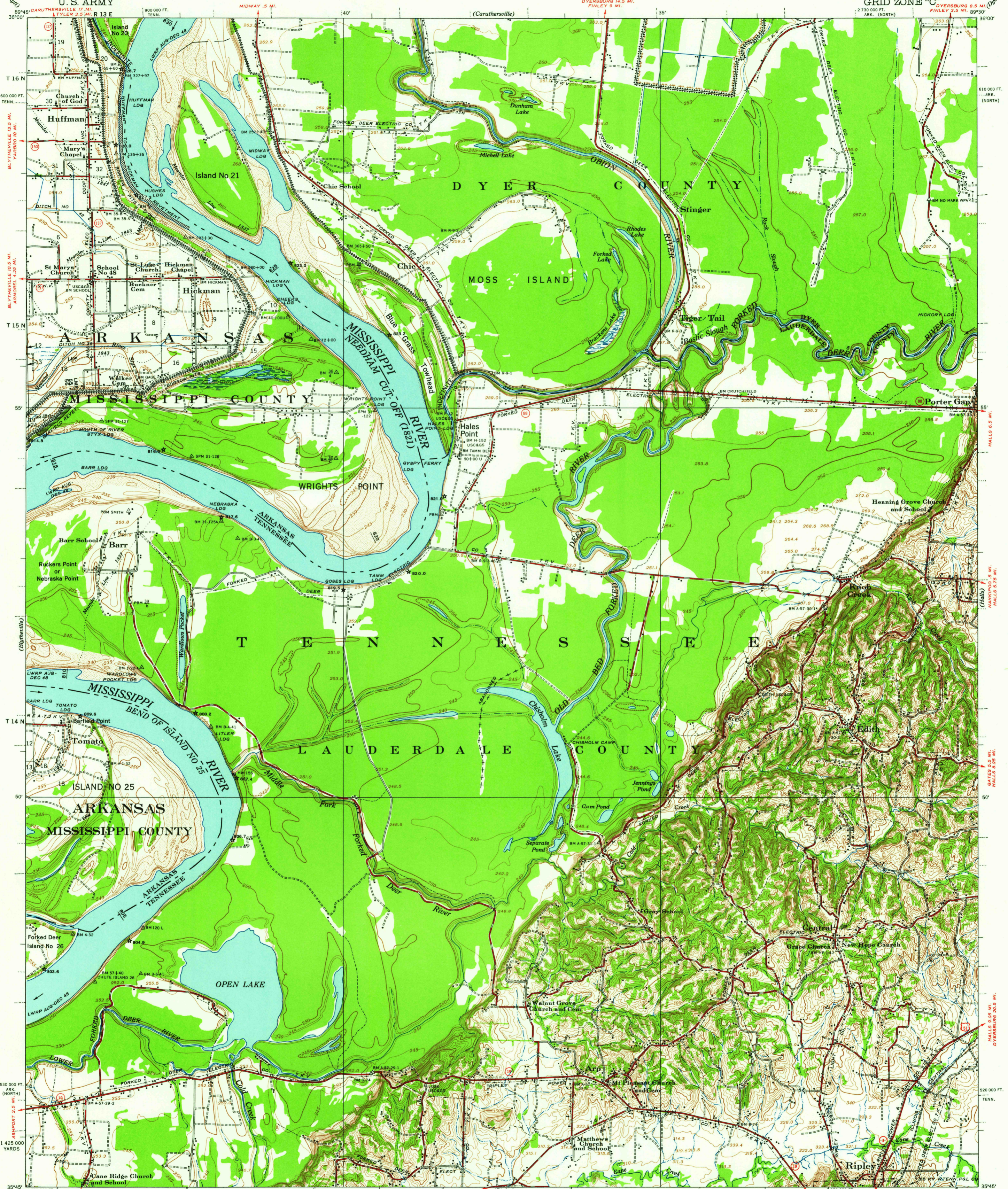
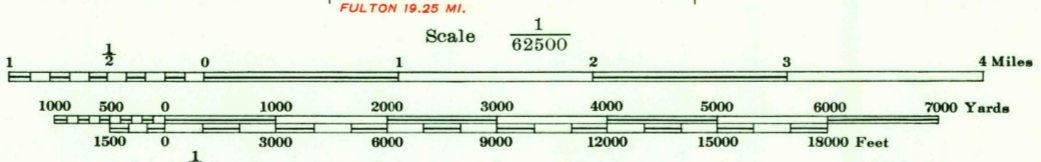


U. S. ARMY



Prepared under the direction of the President, Mississippi River Commission.  
Horizontal control by Mississippi River Commission and Corps of Engineers,  
U. S. Army, Memphis District and U. S. C. & G. S.  
Vertical control by Mississippi River Commission and Corps of Engineers,  
U. S. Army, Memphis District.  
Descriptions, elevations and geodetic positions of bench marks may be  
obtained from Memphis District, Corps of Engineers, U. S. Army, Memphis, Tenn.  
Topography by Corps of Engineers, U. S. Army, Memphis District, 1930, 1942, 1948 and 1949.  
Planimetry remapped from aerial photographs flown in 1941, 1948 and 1949.  
Political boundaries are shown according to best available information, and are  
subject to change except when established by court decision.  
Work under Flood Control Act shown as of March, 1949  
Polyconic Projection, 1927 North American Datum.



Contour intervals 5 feet and 10 feet changing at 260 foot contour  
Datum is mean sea level. Persons interested may secure elevations of bench marks as determined  
by the latest U. S. C. & G. S. adjustments, by applying to the U. S. Coast and Geodetic Survey.  
FIVE THOUSAND YARD GRID COMPUTED FROM "GRID SYSTEM FOR PROGRESSIVE MAPS  
IN THE U. S. ZONE "C" U. S. C. & G. S. SPECIAL PUBLICATION NO. 99.  
THE STATE GRIDS ARE INDICATED FOR TENNESSEE BY --- TICKS  
FOR ARKANSAS ZONE NORTH BY ... TICKS OUTSIDE THE NEARLINE  
AT 10,000 FOOT INTERVALS.

FOR SALE BY U. S. GEOLOGICAL SURVEY, WASHINGTON 25, D. C.,  
ARKANSAS GEOLOGICAL AND CONSERVATION COMMISSION, LITTLE ROCK, ARKANSAS,  
TENNESSEE DIVISION OF GEOLOGY, NASHVILLE, TENN.,  
AND MISSISSIPPI RIVER COMMISSION, VICKSBURG, MISSISSIPPI  
A FOLDER DESCRIBING TOPOGRAPHIC MAPS AND SYMBOLS IS AVAILABLE ON REQUEST

USGS HISTORICAL FILE TOPOGRAPHIC DIVISION

APPROXIMATE MEAN DECLINATION 1945 ANNUAL MAGNETIC CHANGE 0.57 INCREASE

LEGEND

Levee	Levee mile post	LMP
Retards and dikes	Levee station	LS
Revetments	Towhead	TH
River gage		

Distances on Mississippi River above Head of Passes are shown at 5 mile intervals.  
Distances above mouths of Obion and Forked Deer Rivers are shown at 5 mile intervals.

ROUTES USUALLY TRAVELED  
HARD IMPERVIOUS SURFACES  
OTHER SURFACE IMPROVEMENTS  
U. S. ROUTE 1944 STATE ROUTE