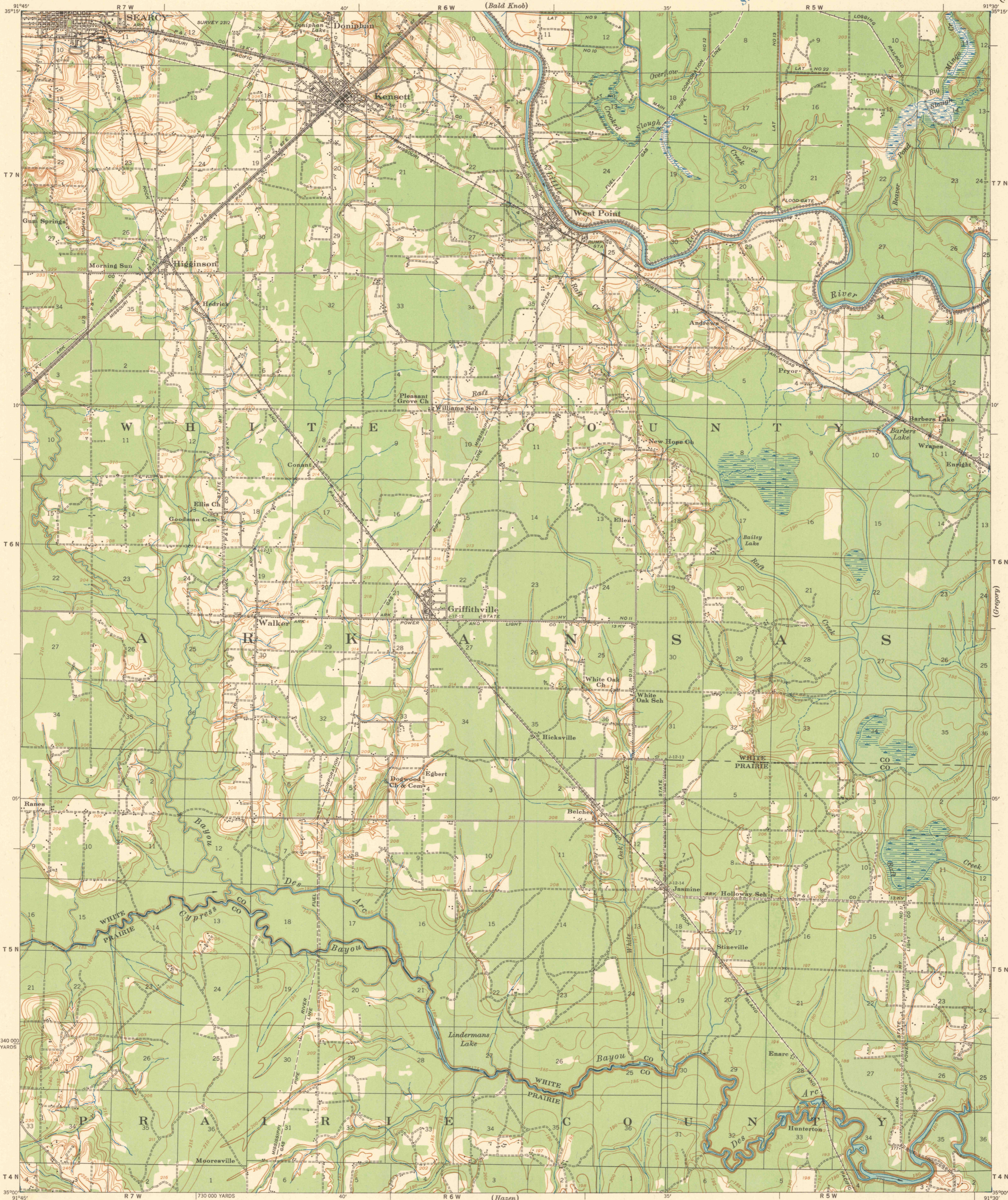
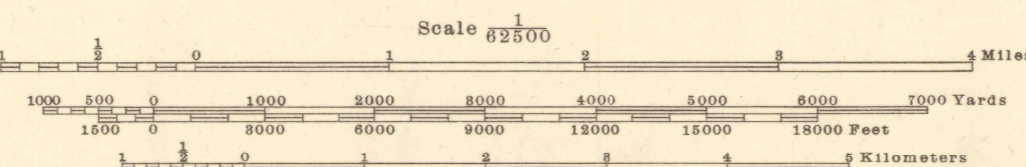


Advance Sheet
Subject to Correction

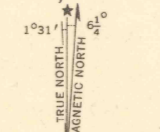


Prepared under the direction of the President, Mississippi River Commission.
Horizontal control by Corps of Engineers, U. S. Army, Memphis District.
Vertical control by Corps of Engineers, U. S. Army, Memphis District.
Topography by Corps of Engineers, U. S. Army, Memphis District, 1931.
Polyconic Projection, North American Datum.



Contour interval 5 feet
Datum is mean gulf level

FIVE THOUSAND YARD GRID COMPUTED FROM "G" GRID SYSTEM FOR PROGRESSIVE MAPS.
IN THE U. S. "Z" ZONE C, U. S. C. & G. S. SPECIAL PUBLICATION NO. 59



LEGEND	
Precise bench mark	Retiement
Bench mark	Retards
Secondary triangulation	Levee mile post
U. S. Gage	Levee station
Levee	Towhead
Dike	
	LMP
	L.S.
	TH

FILE COPY
MAP INFORMATION OFFICE