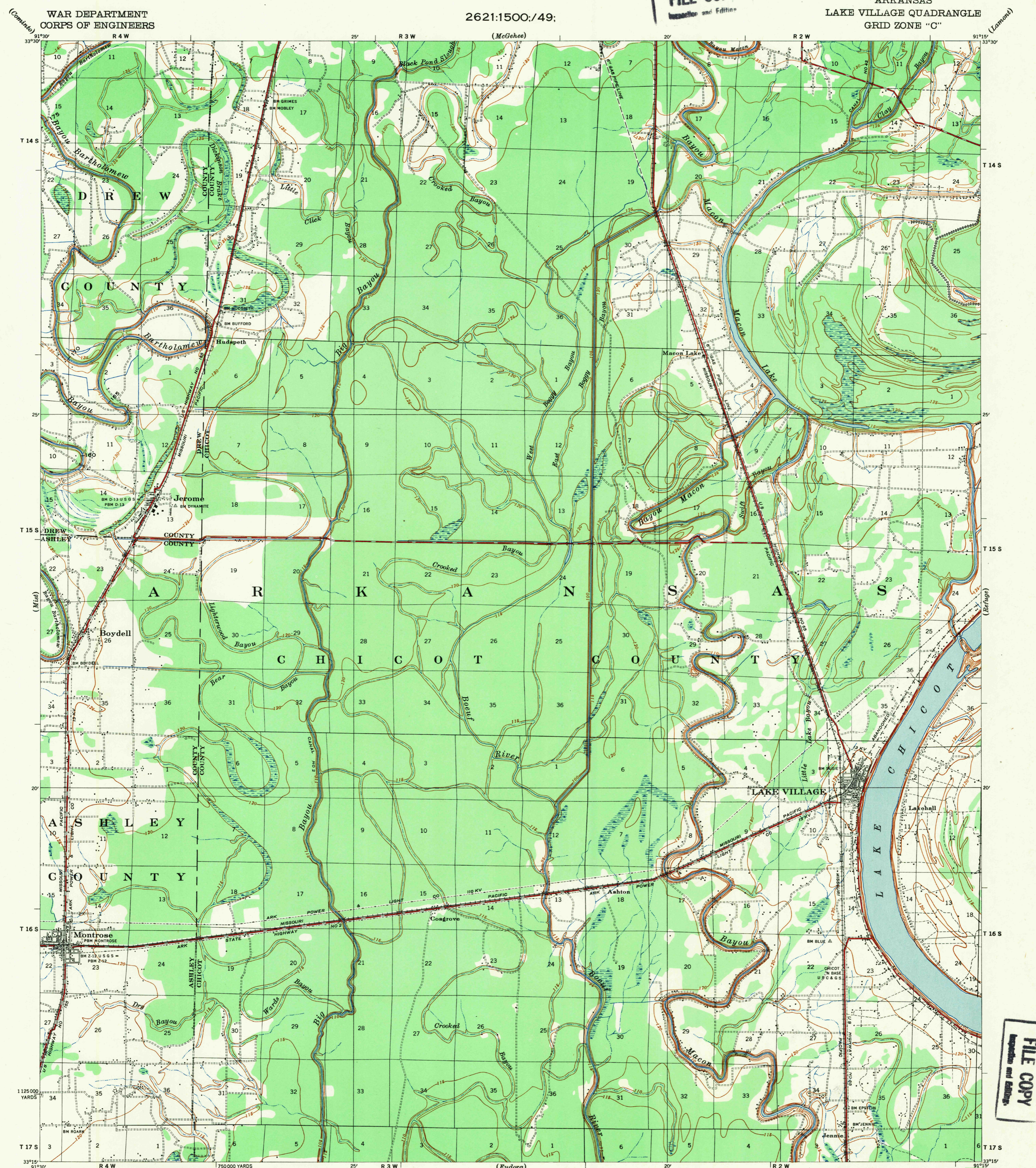


U.S.G.S. FILE COPY

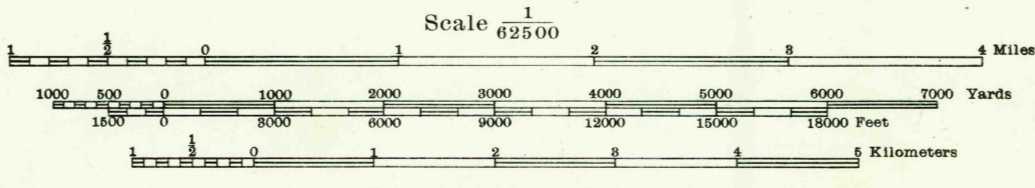
ARKANSAS LAKE VILLAGE QUADRANGLE GRID ZONE "C"

WAR DEPARTMENT CORPS OF ENGINEERS

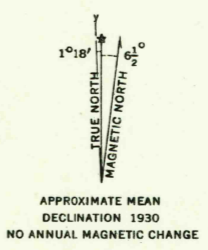
2621:1500/49;



Prepared under the direction of the President, Mississippi River Commission. Horizontal control by Mississippi River Commission and Corps of Engineers, U. S. Army, Vicksburg District. Vertical control by Mississippi River Commission and Corps of Engineers, U. S. Army, Vicksburg District. Topography by Corps of Engineers, U. S. Army, Vicksburg District, 1929-36. Revised by Mississippi River Commission 1932-36. Political boundaries are shown according to best available information and are subject to change except where established by court decision. Work under Flood Control Act as of January, 1936. Polyconic Projection, North American Datum.



Datum is mean gulf level at Biloxi, Mississippi. Elevations differ from mean sea level elevations as determined by the U. S. Coast and Geodetic Survey, by small fractions of a foot. Persons interested may secure elevations of bench marks as determined by the latest U. S. C. & G. S. adjustment, by applying to the U. S. Coast and Geodetic Survey. FIVE THOUSAND YARD GRID COMPUTED FROM "GRID SYSTEM FOR PROGRESSIVE MAPS IN THE U. S. C. & G. S. SPECIAL PUBLICATION NO. 59"



LEGEND table with symbols for Levee, Retards and dikes, Revelment, River Gage, Levee mile post, Levee station, Towhead, LMP, LS, TH.

Distances above mouth of Bayou Bartholomew are shown at 5 mile intervals.

HARD IMPERVIOUSLY SURFACED ROADS OTHER MAIN TRAVELED ROADS, GRAVEL

Additional copies may be procured from The President, Mississippi River Commission, Vicksburg, Miss. 20 cents per copy

USCS Historical File Topographic Division