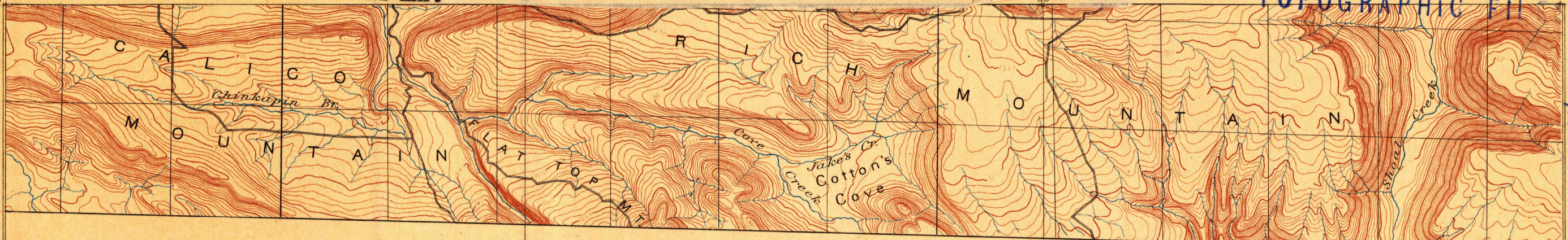


S.E. part of Magazine Mountain quadrangle, ARKANSAS.
This map was made and published by the Geological Survey of
Arkansas. Later the U. S. Geological Survey embodied this work, but
on different scale and contour interval, into their regular published
Magazine Mountain atlas sheet. THE SURVEY HAS NO MORE COPIES OF
THIS MAP.

Magazine Mountain No 4

U.S. GEOLOGICAL SURVEY
J.W. POWELL, DIRECTOR.

U. S. GEOLOGICAL SURVEY
TOPOGRAPHIC FILE



RETAINED COPY
This sheet must not be taken
from the files without an order
from the Chief Geographer.

Henry Gannett, Chief Topographer.
Triangulation by S.S. Gannett.
Topography by the Geol. Survey of Arkansas.

Scale 62500
Contour Interval 20 feet
Miles

USCS
Historical File
Topographic Division

#18P

FEB 24 1900

SURVEYED 1887