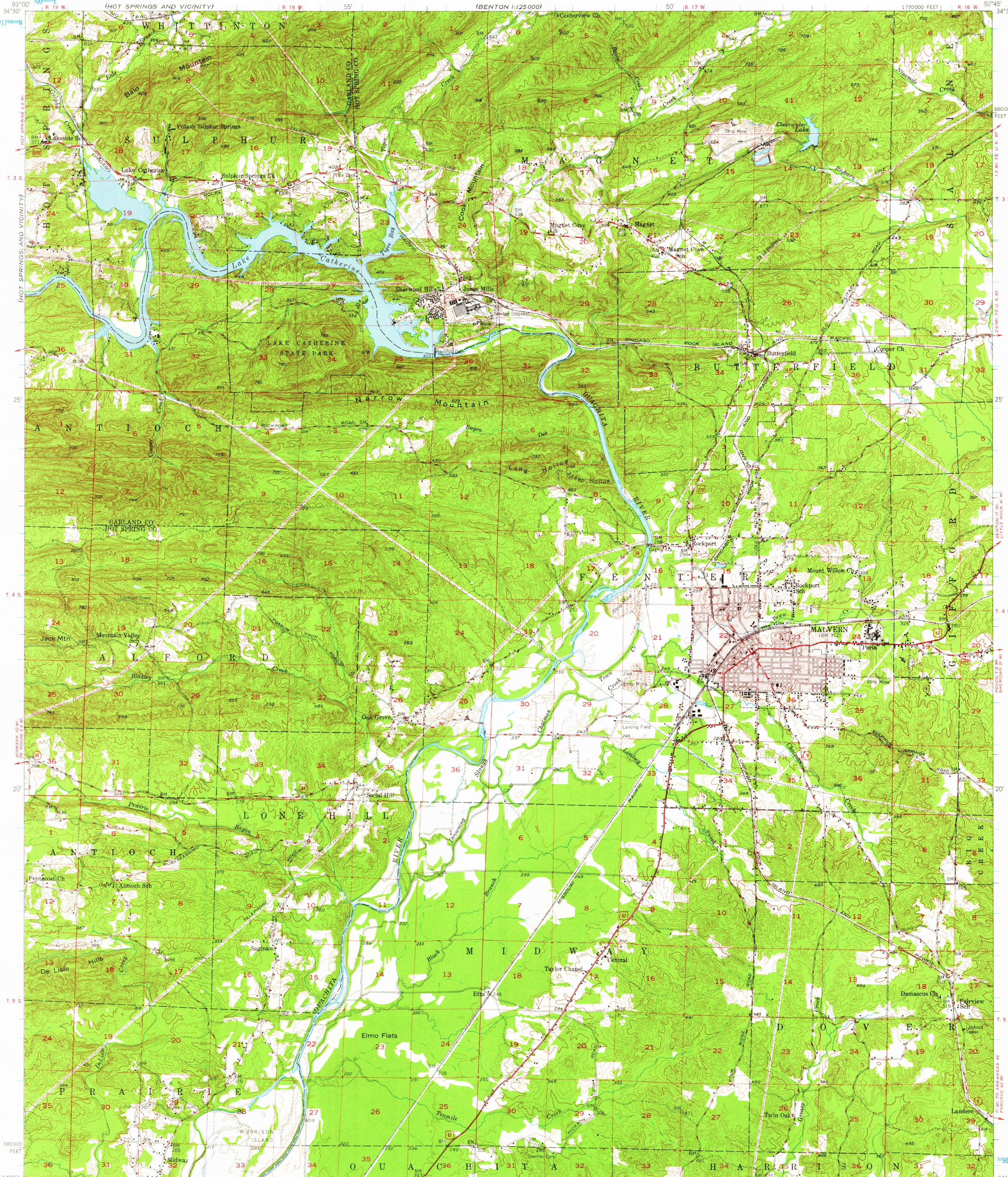


(BENTON)

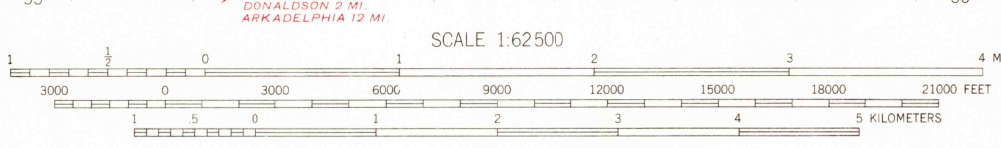


Hot Springs and vicinity

Maped, edited, and published by the Geological Survey
Control by USGS and USC&GS
Topography from aerial photographs by multiplex methods,
and by plane-table surveys 1945-
Aerial photographs taken 1943. Field check, 1947-1948
Polyconic projection. 1927 North American datum,
10,000-foot grid based on Arkansas coordinate system,
south zone
Red tint indicates areas in which only
landmark buildings are shown
1000-metre Universal Transverse Mercator grid ticks,
zone 15, shown in blue

TRUE NORTH
MAGNETIC NORTH

APPROXIMATE MEAN
DECLINATION, 1948



CONTOUR INTERVAL 20 FEET
DATUM IS MEAN SEA LEVEL

THIS MAP COMPLIES WITH NATIONAL MAP ACCURACY STANDARDS
FOR SALE BY U. S. GEOLOGICAL SURVEY, DENVER, COLORADO 80225 OR WASHINGTON, D. C. 20242
AND BY THE ARKANSAS GEOLOGICAL COMMISSION, LITTLE ROCK, ARKANSAS 72201
A FOLDER DESCRIBING TOPOGRAPHIC MAPS AND SYMBOLS IS AVAILABLE ON REQUEST

ROAD CLASSIFICATION

HARD SURFACE ALL WEATHER ROADS DRY WEATHER ROADS
Heavy-duty ———— 2 LANE LANE Improved dirt
Medium-duty ———— 2 LANE LANE Unimproved dirt
Loose-surface, graded, or narrow hard-surface ————
U. S. Route State Route

MALVERN, ARK.
N3415-W9245/15
1948

USGS
Historical File
Topographic Division

SEP 09 1976