

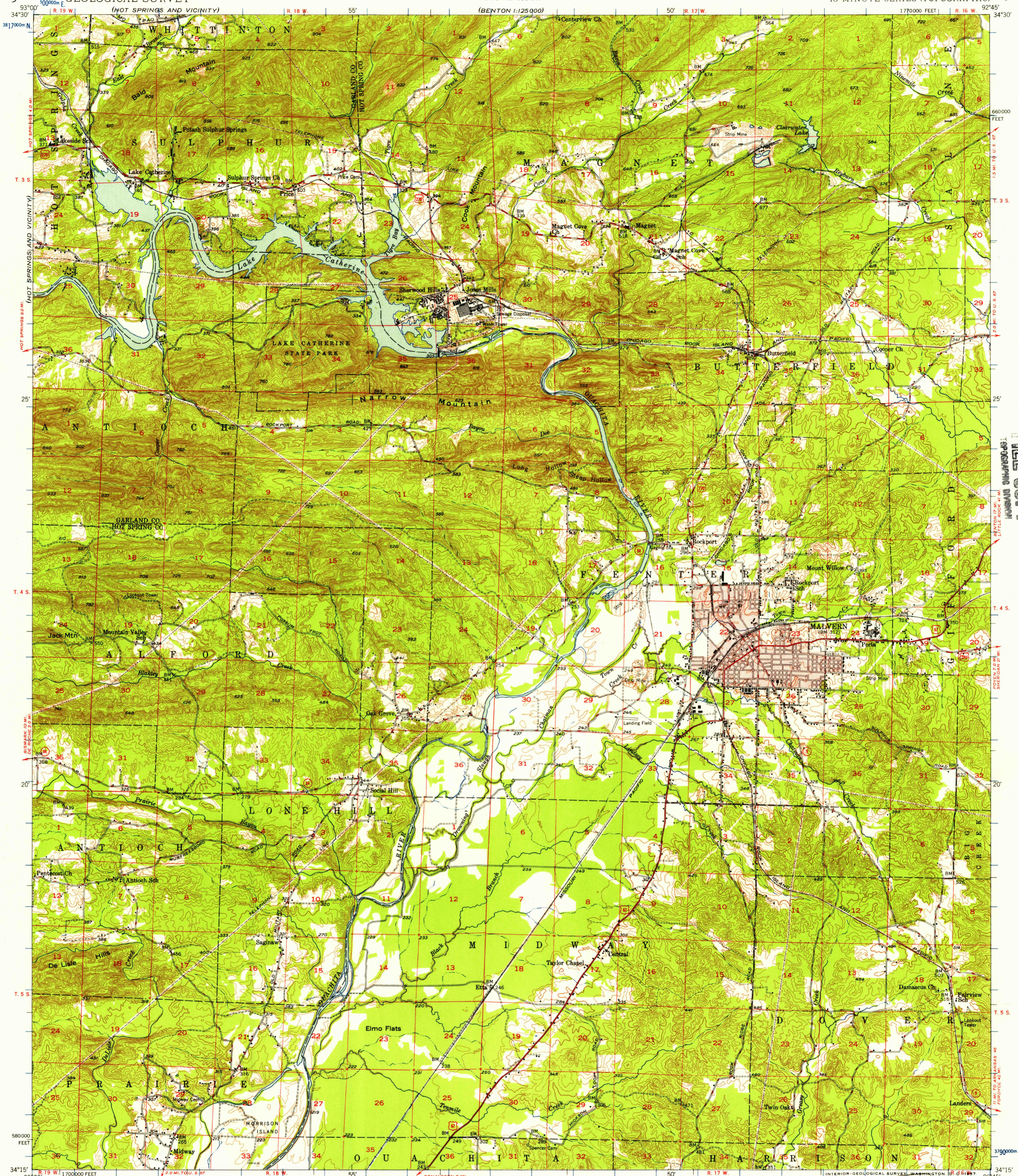
(HOT SPRINGS AND VICINITY)

UNITED STATES  
DEPARTMENT OF THE INTERIOR  
GEOLOGICAL SURVEY

STATE OF ARKANSAS  
RESOURCES AND DEVELOPMENT COMMISSION  
DIVISION OF GEOLOGY  
LITTLE ROCK

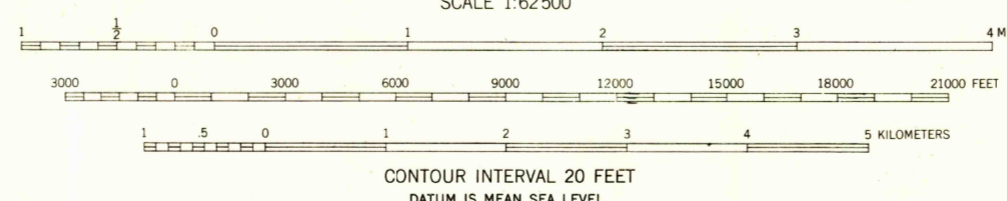
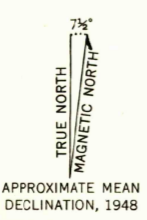
MALVERN QUADRANGLE  
ARKANSAS  
15 MINUTE SERIES (TOPOGRAPHIC)

(BENTON)



U.S.G.S.  
FILE COPY  
TOPOGRAPHIC DIVISION  
LITTLE ROCK, ARK.

Maped, edited, and published by the Geological Survey  
Control by USGS and USC&GS  
Topography from aerial photographs by multiplex methods,  
and by plane-table surveys 1945-1947  
Aerial photographs taken 1943. Field check, 1947-1948  
Polyconic projection. 1927 North American datum  
10,000-foot grid based on Arkansas coordinate system,  
south zone  
Red tint indicates areas in which only  
landmark buildings are shown  
1000-meter Universal Transverse Mercator grid ticks,  
zone 15, shown in blue



USGS  
Historical File  
Topographic Division

ROAD CLASSIFICATION

HARD-SURFACE ALL WEATHER ROADS	DRY WEATHER ROADS
Heavy-duty — 4 LANE LANE	Improved dirt
Medium-duty — 4 LANE LANE	Unimproved dirt
Loose-surface, graded, or narrow hard-surface	
U. S. Route	State Route

U.S.G.S.  
FILE COPY  
TOPOGRAPHIC DIVISION

MALVERN, ARK.  
N3415-W9245/15  
1948

THIS MAP COMPLIES WITH NATIONAL MAP ACCURACY STANDARDS  
FOR SALE BY U. S. GEOLOGICAL SURVEY, DENVER 2, COLORADO OR WASHINGTON 25, D. C.  
AND BY THE ARKANSAS GEOLOGICAL AND CONSERVATION COMMISSION, LITTLE ROCK, ARKANSAS  
A FOLDER DESCRIBING TOPOGRAPHIC MAPS AND SYMBOLS IS AVAILABLE ON REQUEST

JUL 24 1957