

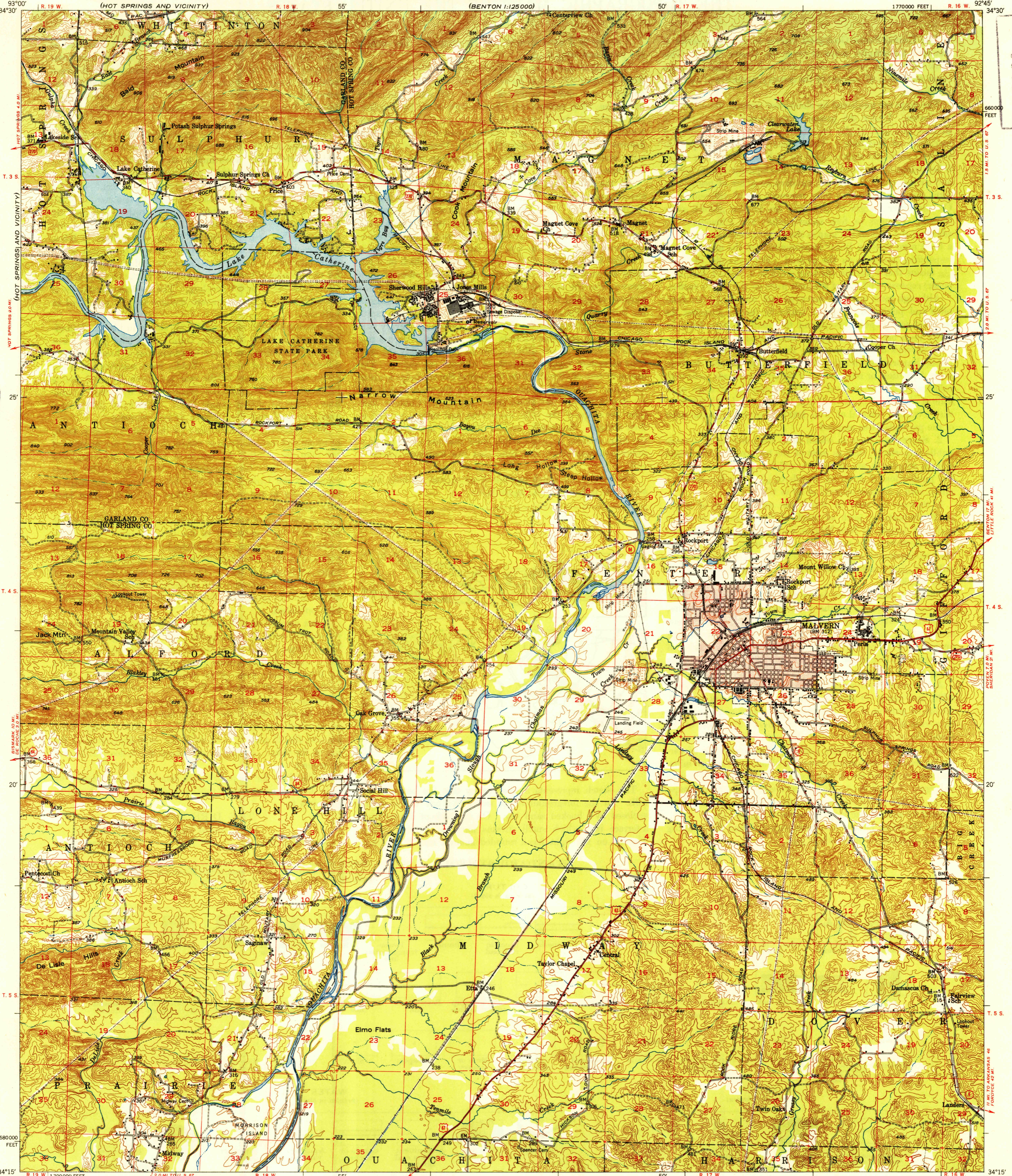
(HOT SPRINGS AND VICINITY)

UNITED STATES DEPARTMENT OF THE INTERIOR GEOLOGICAL SURVEY

STATE OF ARKANSAS RESOURCES AND DEVELOPMENT COMMISSION DIVISION OF GEOLOGY LITTLE ROCK

MALVERN QUADRANGLE ARKANSAS 15 MINUTE SERIES (TOPOGRAPHIC)

(BENTON 1:25000)



U.S.G.S. FILE COPY Inspection and Editing

U.S.G.S. FILE COPY Inspection and Editing

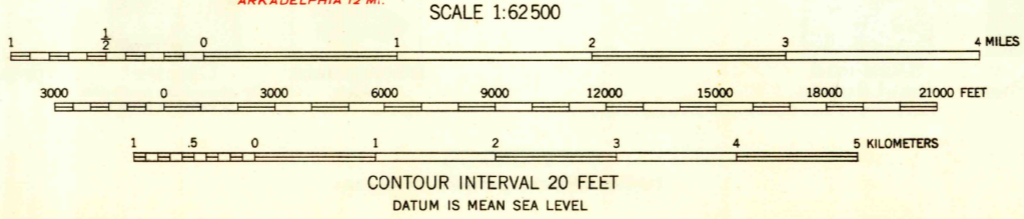
Mapped, edited, and published by the Geological Survey Control by USGS and USC&GS

Topography from aerial photographs by multiplex methods, and by plane-table surveys 1945-1947 Aerial photographs taken 1943 Field check 1947-1948

Polyconic projection. 1927 North American datum 10,000-foot grid based on Arkansas coordinate system, south zone

Red tint indicates areas in which only landmark buildings are shown

TRUE NORTH MAGNETIC NORTH APPROXIMATE MEAN DECLINATION, 1948



THIS MAP COMPLIES WITH NATIONAL MAP ACCURACY STANDARDS FOR SALE BY U. S. GEOLOGICAL SURVEY, WASHINGTON 25, D. C.

USGS Historical File Topographic Division

ROAD CLASSIFICATION: Heavy-duty, Medium-duty, Loose-surface, graded, or narrow hard-surface, U. S. Route, State Route

U.S.G.S. FILE COPY Inspection and Editing

MALVERN, ARK. N3415-W9245/15 ED-1948 PRINTED 1949 JUL 6 1949 2130