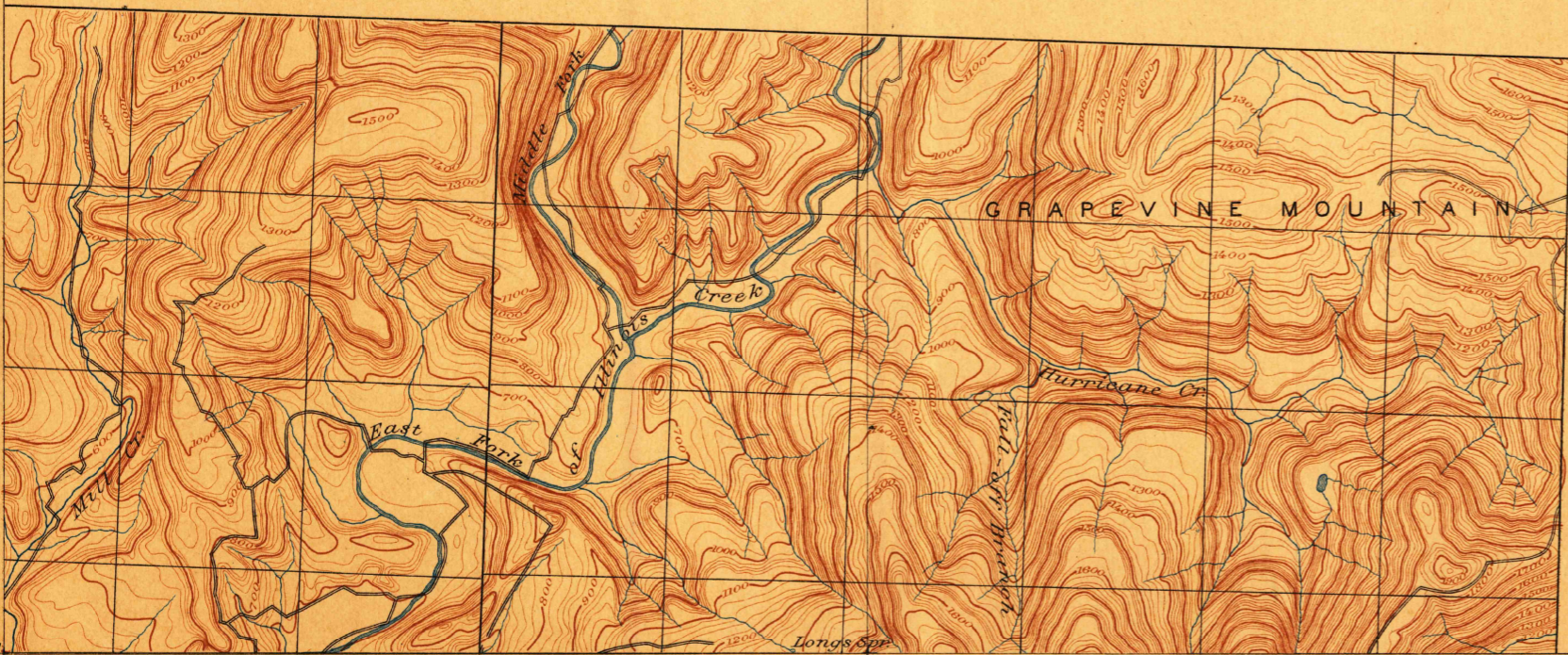


U.S. GEOLOGICAL SURVEY
J.W. POWELL, DIRECTOR.

S.W. part of Marshall quadrangle, ARKANSAS.
This map was made and published by the Geological Survey of Arkansas. Later the U. S. Geological Survey embodied this work, but on different scale and contour interval, into their regular published *Marshall* atlas sheet. THE SURVEY HAS NO MORE COPIES OF THIS MAP.

Marshall #3
U. S. GEOLOGICAL SURVEY
TOPOGRAPHIC FILE

RETAINED COPY
This sheet must not be taken
from the files without an order
from the Chief Geographer.



Henry Gannett, Chief Topographer.
Triangulation by S.S. Gannett.
Topography by the Geol. Survey of Arkansas.

Scale 1/25000
Contour Interval 20 feet
5 Miles

USGS
Historical File
Topographic Division

#7P
FEB 24 1906
MARSHALL #3
SURVEYED 1889