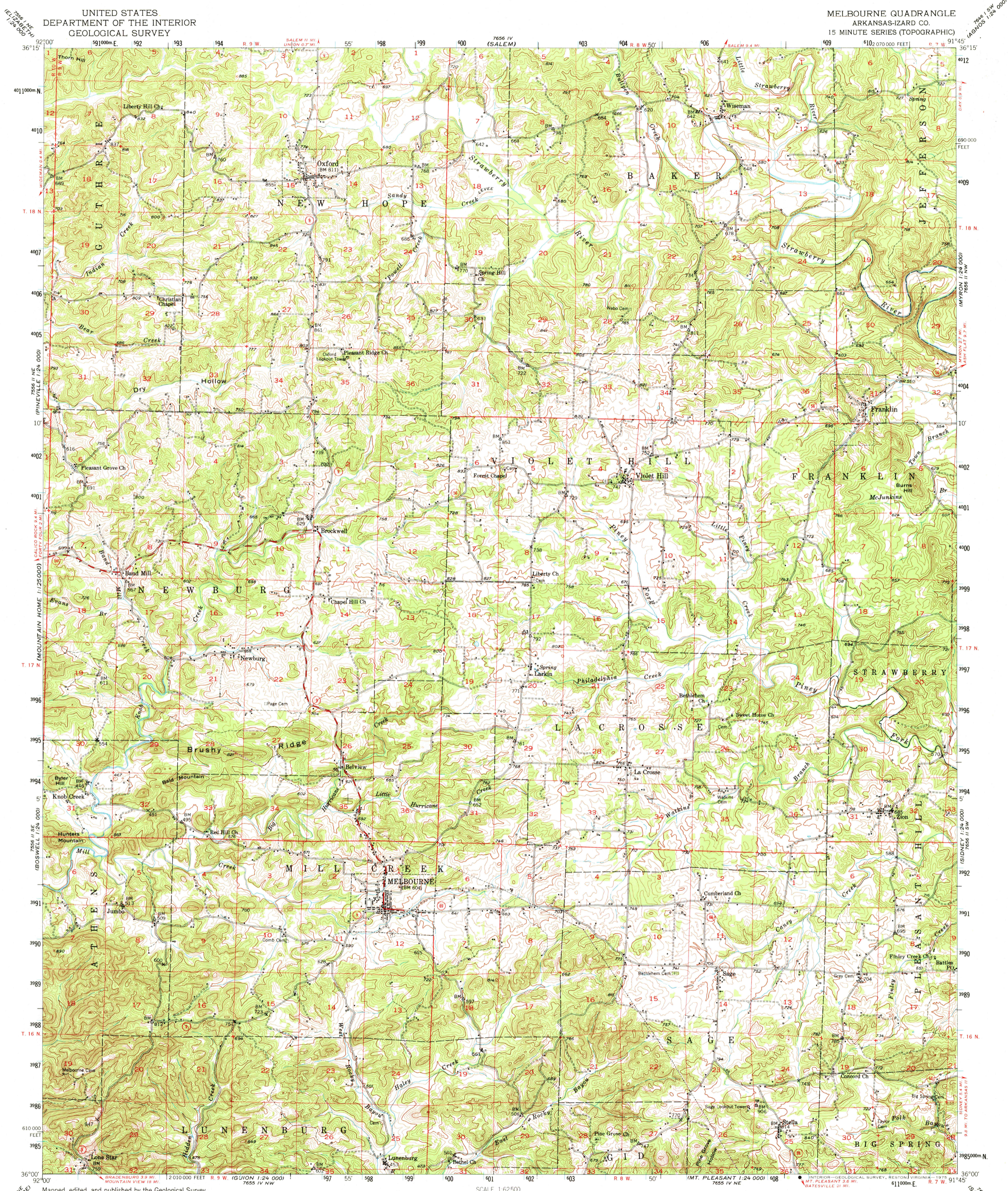
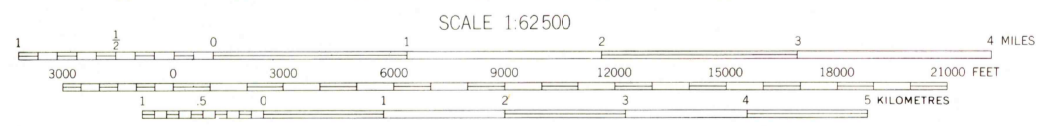


UNITED STATES
DEPARTMENT OF THE INTERIOR
GEOLOGICAL SURVEY

MELBOURNE QUADRANGLE
ARKANSAS-IZARD CO.
15 MINUTE SERIES (TOPOGRAPHIC)



Mapped, edited, and published by the Geological Survey
Control by USGS, USC&GS, and USCE
Topography from aerial photographs by multiplex methods
Aerial photographs taken 1946. Field check 1950-1951
Polyconic projection. 1927 North American datum
10,000-foot grid based on Arkansas coordinate system,
north zone
Unchecked elevations are shown in brown
1000-metre Universal Transverse Mercator grid ticks,
zone 15, shown in blue



ROAD CLASSIFICATION
Heavy-duty 4 LANE BLANK Light-duty
Medium-duty 4 LANE BLANK Unimproved dirt
U.S. Route State Route

CONTOUR INTERVAL 20 FEET
NATIONAL GEODETIC VERTICAL DATUM OF 1929

THIS MAP COMPLIES WITH NATIONAL MAP ACCURACY STANDARDS
FOR SALE BY U.S. GEOLOGICAL SURVEY, DENVER, COLORADO 80225, OR RESTON, VIRGINIA 22092
ARKANSAS GEOLOGICAL COMMISSION, LITTLE ROCK, ARKANSAS 72201.
A FOLDER DESCRIBING TOPOGRAPHIC MAPS AND SYMBOLS IS AVAILABLE ON REQUEST

MELBOURNE, ARK.
N3600-W9145/15
1951
AMS 7656 III-SERIES V784

MAY 2 1 1975

USGS
HISTORICAL FILE
TOPOGRAPHIC DIVISION

1690