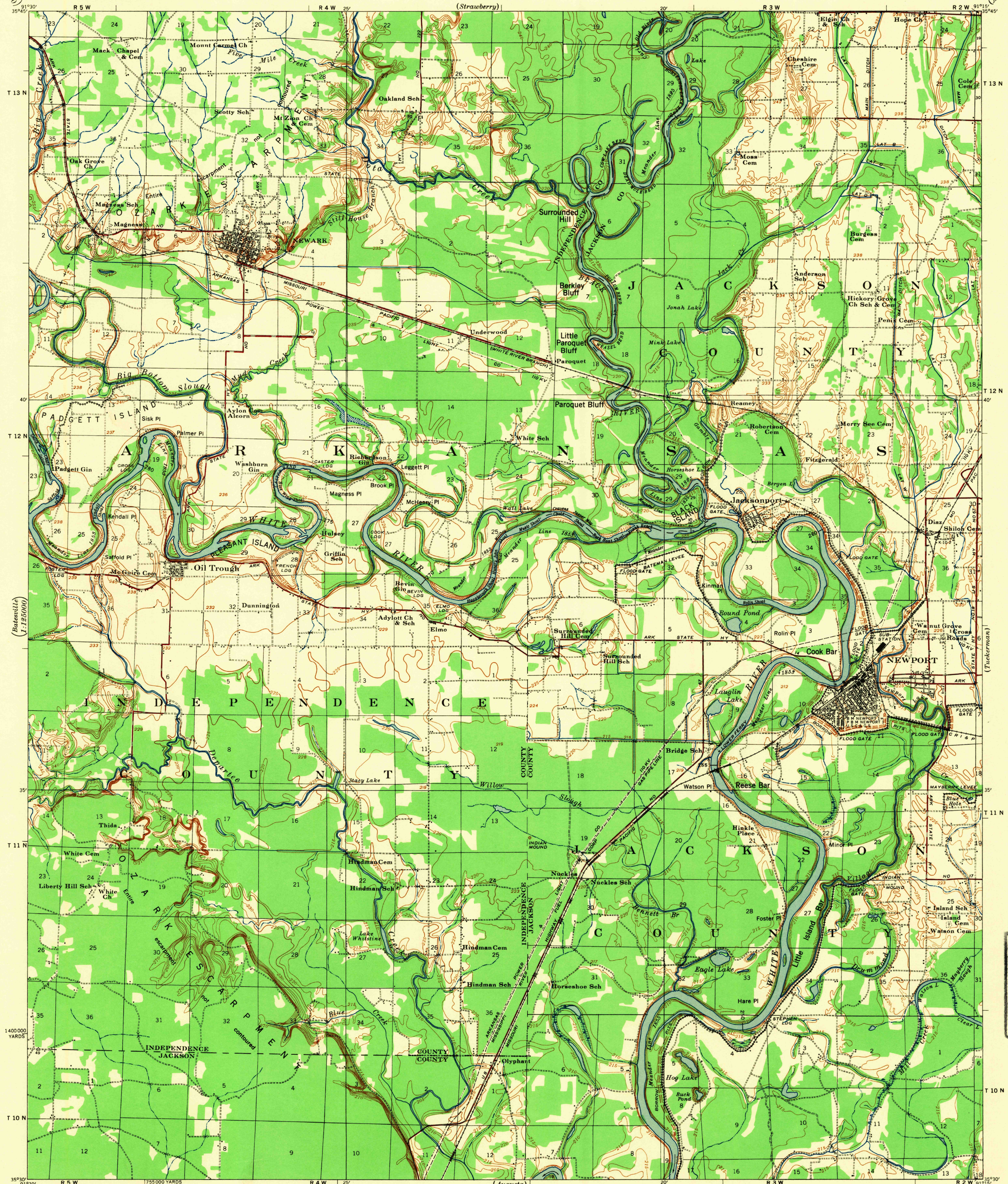


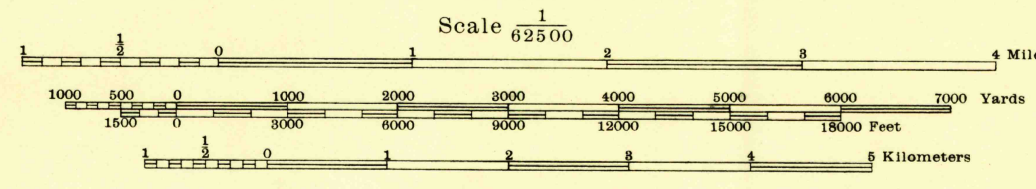
U.S.G.S. FILE COPY

ARKANSAS NEWPORT QUADRANGLE GRID ZONE "C"

WAR DEPARTMENT CORPS OF ENGINEERS



Prepared under the direction of the President, Mississippi River Commission. Horizontal control by Corps of Engineers, U.S. Army, Memphis District. Vertical control by Corps of Engineers, U.S. Army, Memphis District. Topography by Corps of Engineers, U.S. Army, Memphis District, 1929. Revised by Mississippi River Commission, 1932-35. Political boundaries are shown according to best available information, and are subject to change except where established by court decision. Work under Flood Control Act of January, 1935. Polyconic Projection, North American Datum.



PRINTED BY ARMY MAP SERVICE, CORPS OF ENGINEERS, 4-54, 101048

LEGEND
Levee +-----+ Levee mile post LMP
Retards and dikes [Symbol] Levee station LS
Revetment [Symbol] Towhead TH
River Gate [Symbol]

Contour interval 5 feet
Datum is mean gulf level at Biloxi, Mississippi. Elevations differ from mean sea level elevations as determined by the U. S. Coast and Geodetic Survey, by small fractions of a foot. Persons interested may secure elevations of bench marks as determined by the latest U. S. C. & G. S. adjustment, by applying to the U. S. Coast and Geodetic Survey. FIVE THOUSAND YARD GRID COMPUTED FROM "GRID SYSTEM FOR PROGRESSIVE MAPS IN THE U. S. ZONE C, U. S. C. & G. S. SPECIAL PUBLICATION NO. 59"

APPROXIMATE MEAN DECLINATION 1929 ANNUAL MAGNETIC CHANGE 1' DECREASE

Additional copies may be procured from The President, Mississippi River Commission, Vicksburg, Miss. 20 cents per copy

USGS Historical File Topographic Division

NEWPORT, ARK. EDITION OF 1935

U.S.G.S. FILE COPY