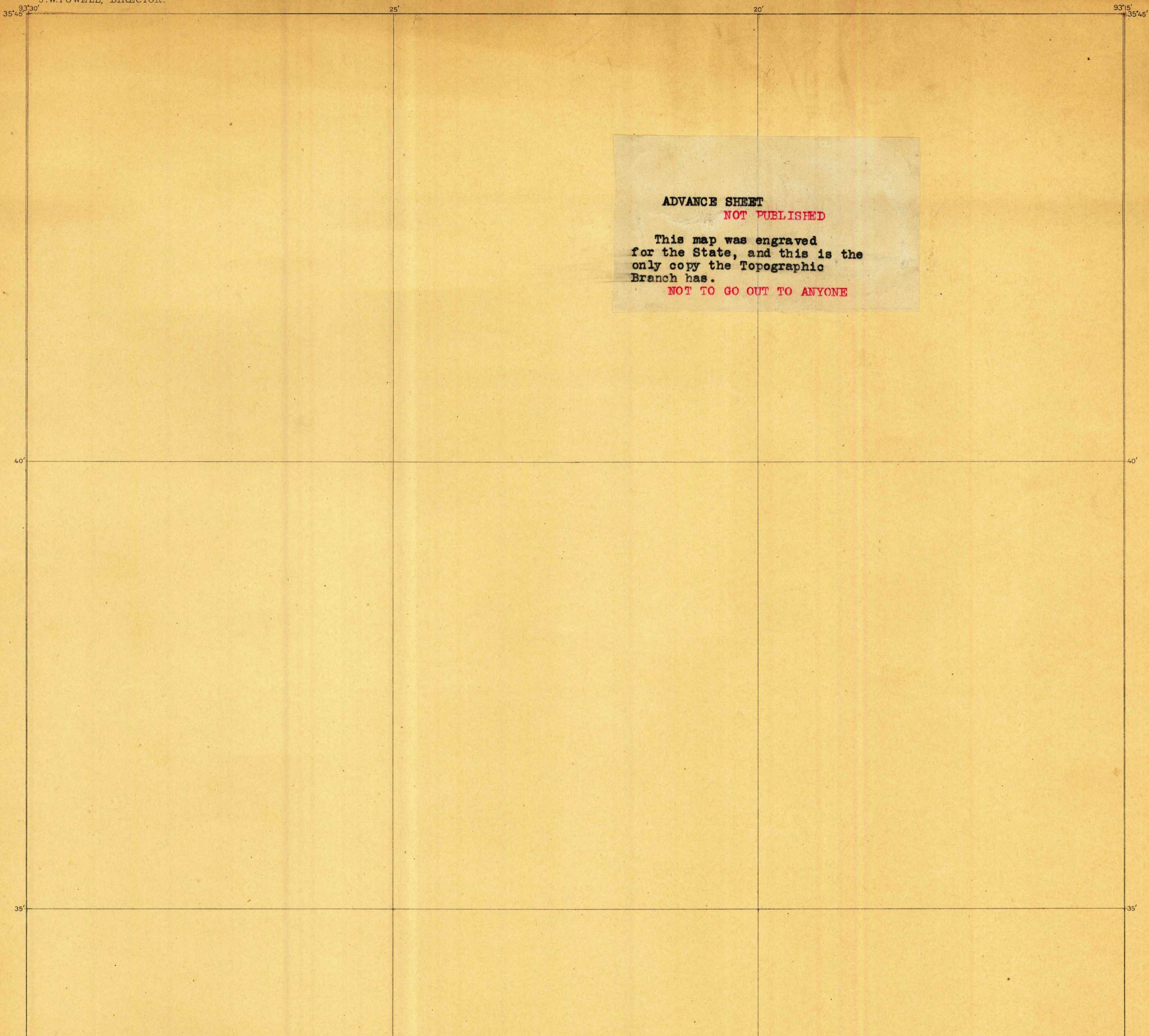
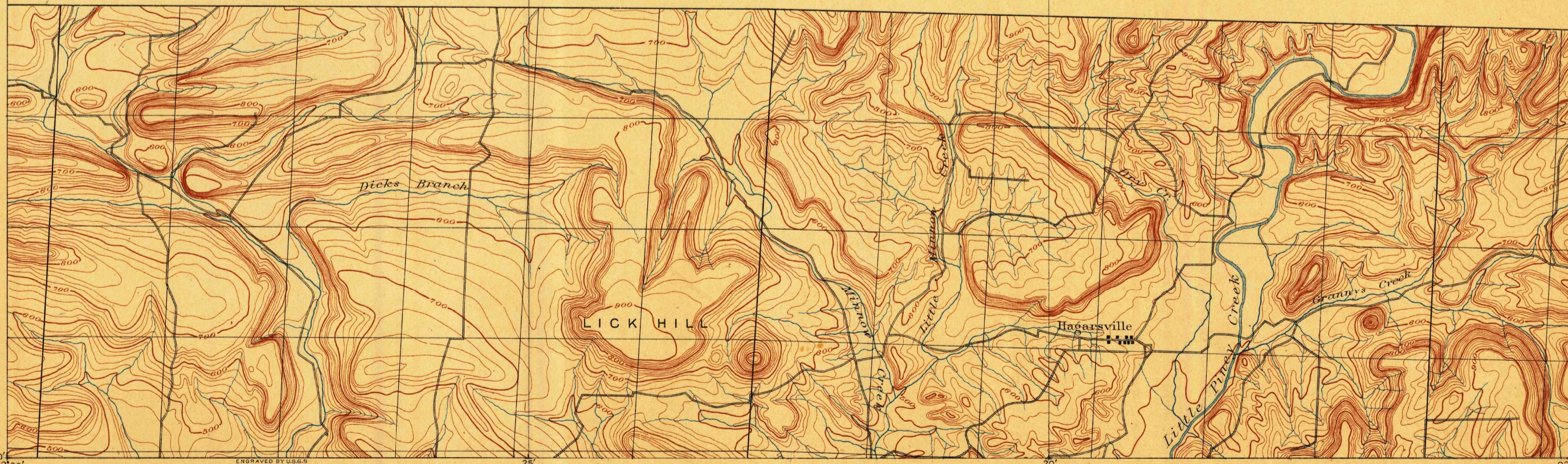


South portion of Ozone Ark.

U.S. GEOLOGICAL SURVEY.
J.W. POWELL, DIRECTOR.



ADVANCE SHEET
NOT PUBLISHED
This map was engraved
for the State, and this is the
only copy the Topographic
Branch has.
NOT TO GO OUT TO ANYONE



Henry Gannett, Chief Topographer.
Triangulation by S.S. Gannett.
Topography by the Geol. Survey of Arkansas.

Scale 1/32,000
Contour Interval 20 feet
0 1 2 3 4 5 Miles

USGS
Historical File
Topographic Division

#5P
OZONE ARK.
(SOUTH PORTION OF)
FEB 13 1908
SURVEYED 1889