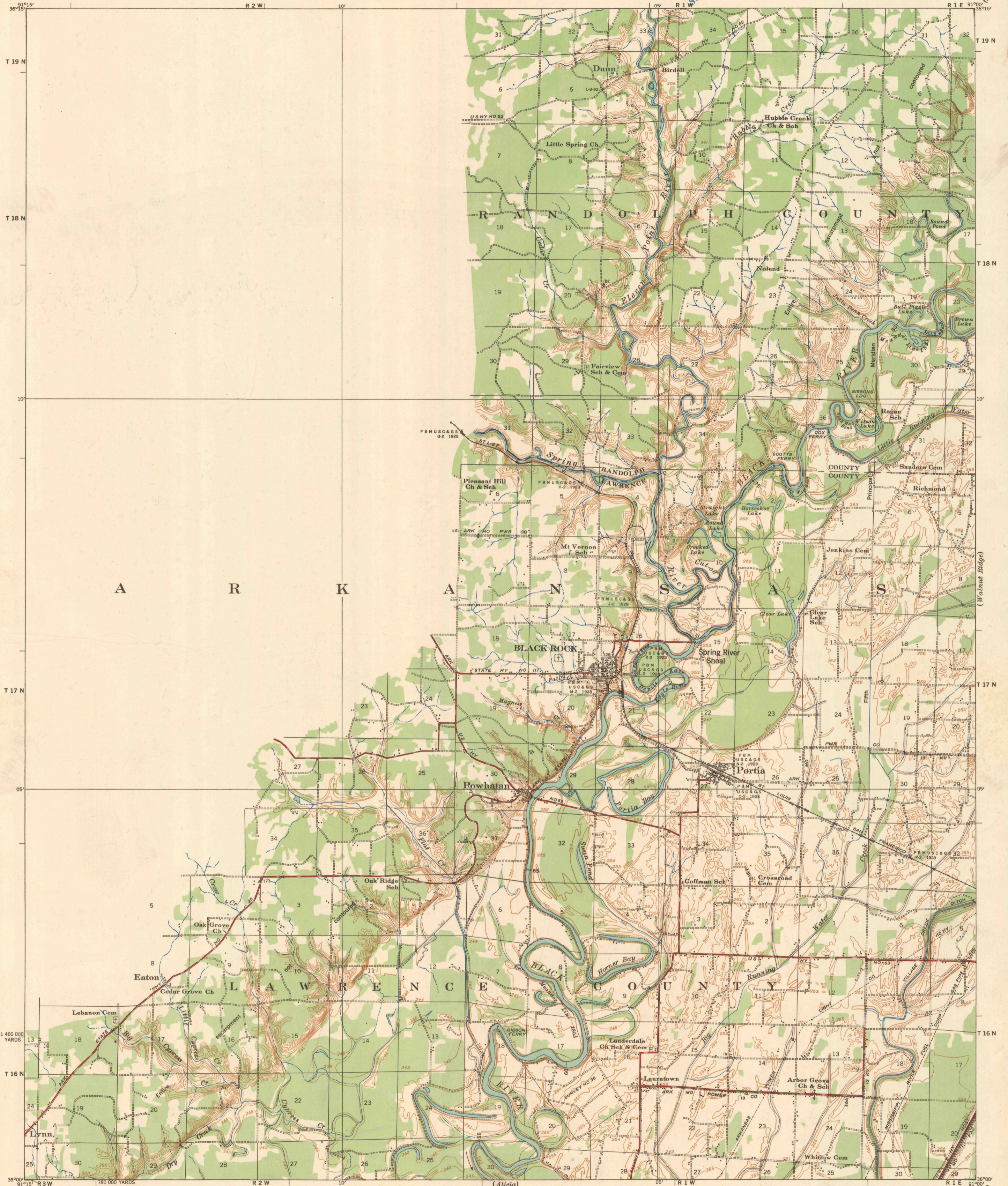
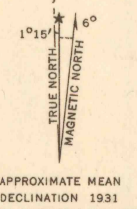
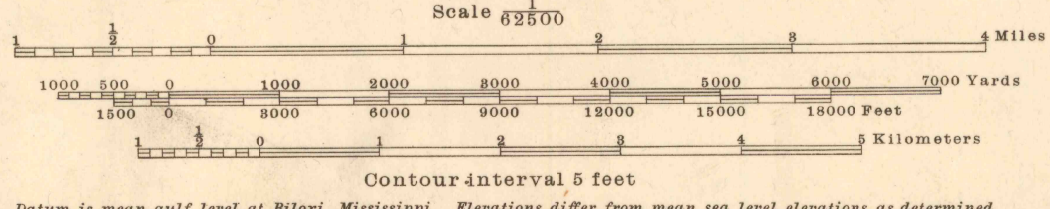


2d Advance Sheet  
Subject to Correction

T-4-1



Prepared under the direction of the President, Mississippi River Commission.  
Horizontal control by Corps of Engineers, U. S. Army, Memphis District.  
Vertical control by Corps of Engineers, U. S. Army, Memphis District and U. S. C. & G. S.  
Topography by Corps of Engineers, U. S. Army, Memphis District, 1931.  
Revised by Mississippi River Commission, 1932-33.  
Political boundaries are shown according to best available information, and are subject to change except where established by court decision.  
Area outside Alluvial Valley taken from aerial photographs and is not contoured.  
Polyconic Projection, North American Datum.



LEGEND

Levee	Levee mile post	LMP
Retards and dikes	Levee station	L.S.
Revetment	Towhead	T.H.
River Gage		

Datum is mean gulf level at Biloxi, Mississippi. Elevations differ from mean sea level elevations as determined by the U. S. Coast and Geodetic Survey, by small fractions of a foot. Persons interested may secure elevations of bench marks as determined by the latest U. S. C. & G. S. adjustment, by applying to the U. S. Coast and Geodetic Survey.  
FIVE THOUSAND YARD GRID COMPUTED FROM "GRID SYSTEM FOR PROGRESSIVE MAPS IN THE U. S." ZONE C. U. S. C. & G. S. SPECIAL PUBLICATION NO. 59

Distances above mouth of Black River shown at 5 mile intervals.  
Distances above mouth of Spring River shown at 5 mile intervals.  
Distances above mouth of Eleven Point River shown at 5 mile intervals.

HARD IMPERVIOUSLY SURFACED ROADS  
OTHER MAIN TRAVELED ROADS, GRAVEL