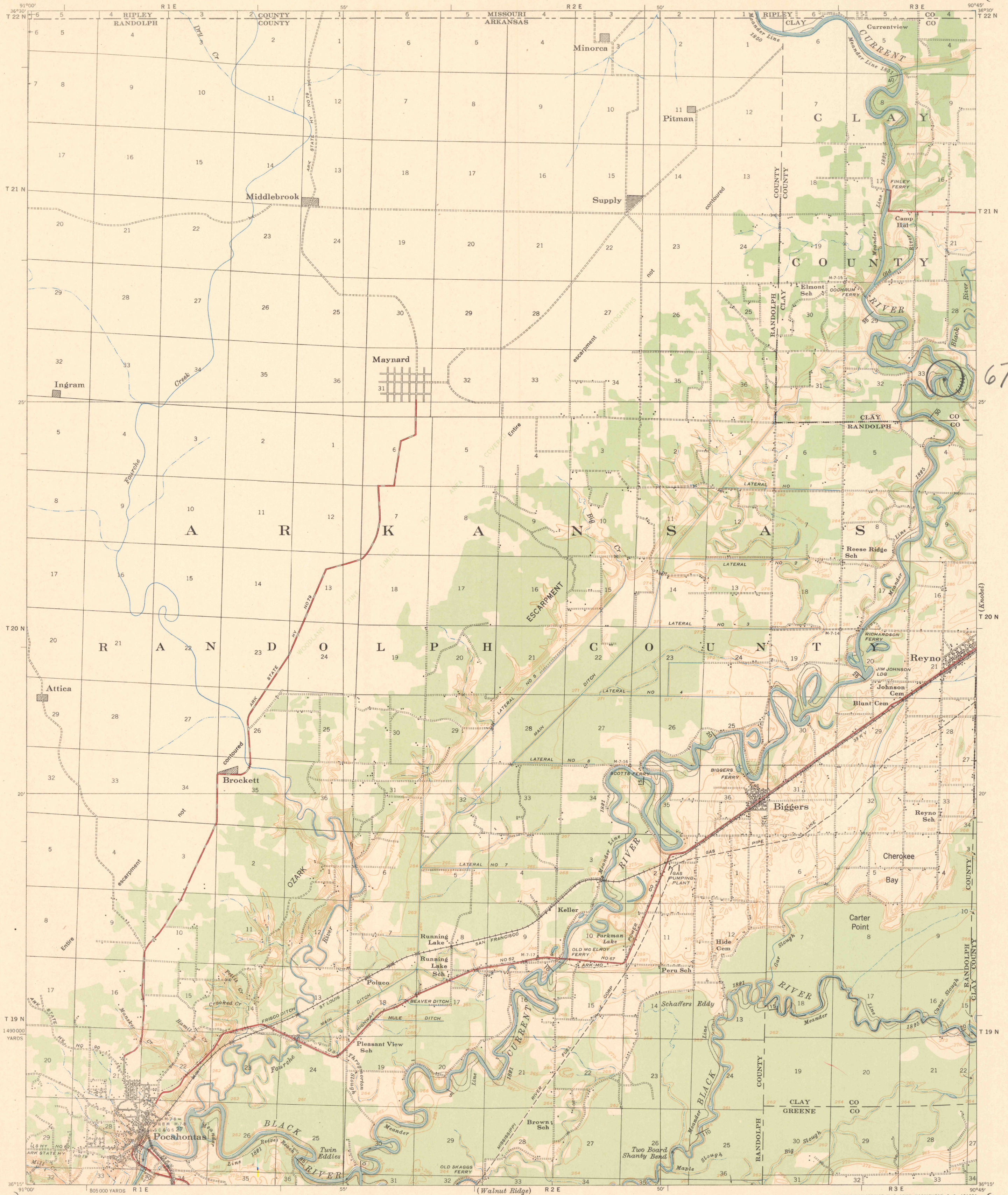
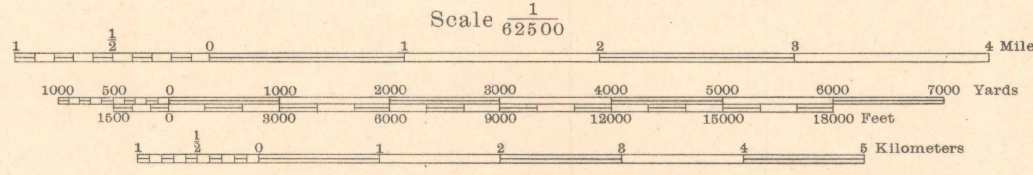


(Aeron)

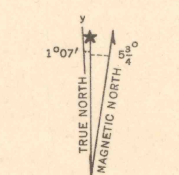


67

Prepared under the direction of the President, Mississippi River Commission. Horizontal control by Corps of Engineers, U. S. Army, Memphis District. Vertical control by Corps of Engineers, U. S. Army, Memphis District. Topography by Corps of Engineers, U. S. Army, Memphis District, 1930. Area outside Alluvial Valley taken from Johnson-Anderson ownership map of Randolph County, Arkansas. Revised by Mississippi River Commission, 1932-35. Political boundaries are shown according to best available information and are subject to change except where established by court decision. Polyconic Projection, North American Datum.



Contour interval 5 feet
Datum is mean gulf level at Biloxi, Mississippi. Elevations differ from mean sea level elevations as determined by the U. S. Coast and Geodetic Survey, by small fractions of a foot. Persons interested may secure elevations of bench marks as determined by the latest U. S. C. & G. S. adjustment, by applying to the U. S. Coast and Geodetic Survey.
FIVE THOUSAND YARD GRID COMPUTED FROM "GRID SYSTEM FOR PROGRESSIVE MAPS" IN THE U. S. ZONE C. U. S. G. & S. SPECIAL PUBLICATION NO. 39



LEGEND

Levee	Levee mile post	LMP
Retards and dikes	Levee station	LS
Revetment	Towhead	TH
River Gage		

Distances above mouth of Black River are shown at 5 mile intervals. Distances above mouth of Current River are shown at 5 mile intervals.

Additional copies may be procured from The President, Mississippi River Commission, Vicksburg, Miss. 10 cents per copy

HARD IMPERVIOUSLY SURFACED ROADS
OTHER MAIN TRAVELED ROADS, GRAVEL

RT-F FILE COPY