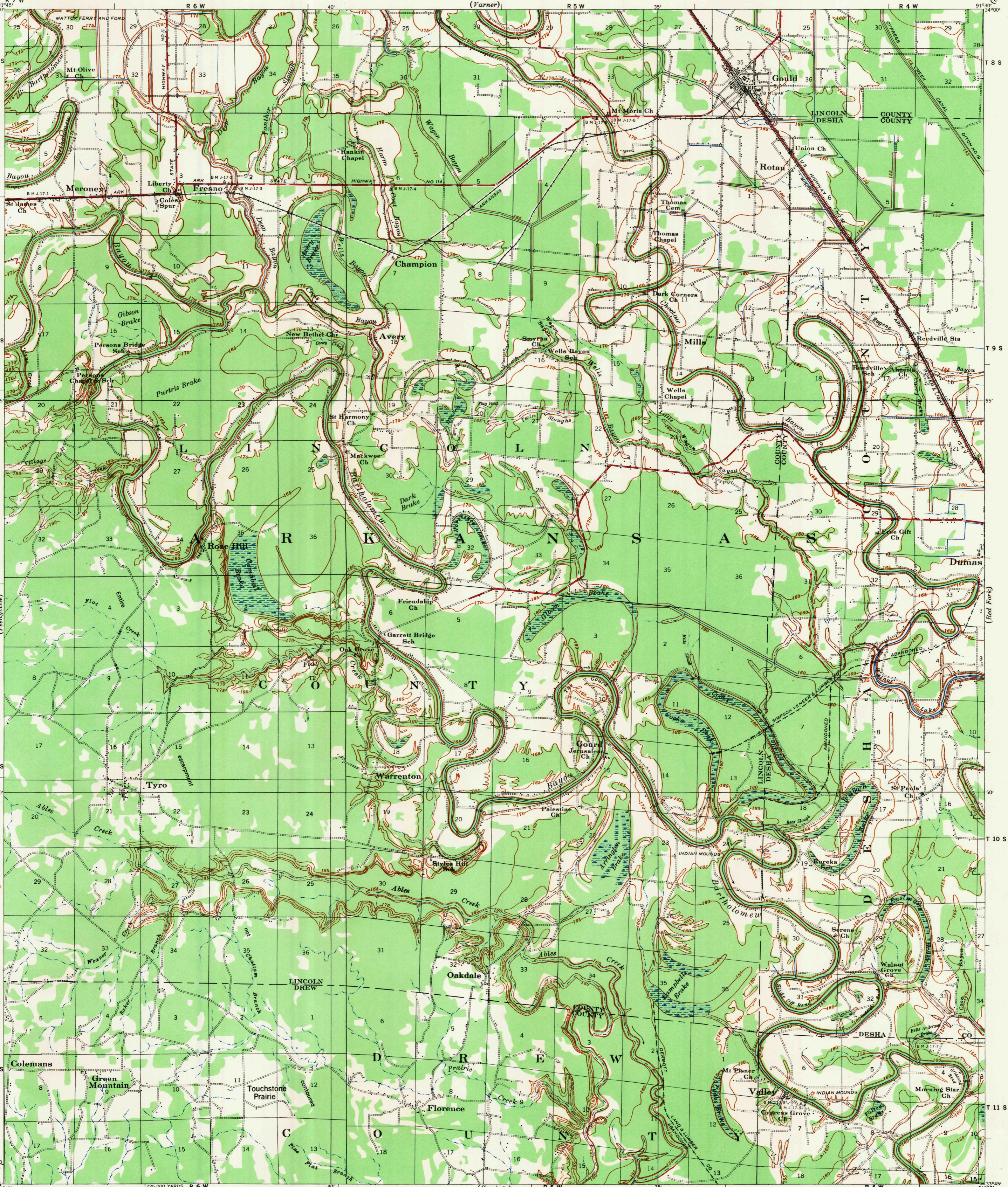


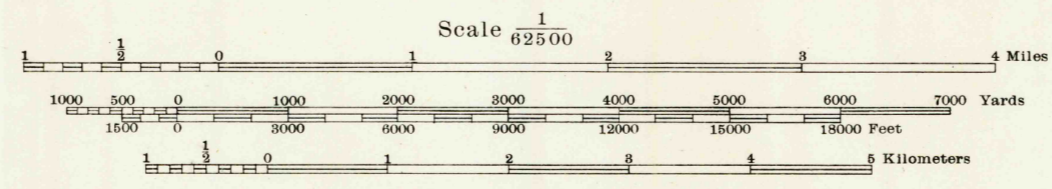
U.S.G.S.
FILE COPY
Inspection and Editing.

WAR DEPARTMENT
CORPS OF ENGINEERS

2621:0750:99;



Prepared under the direction of the President, Mississippi River Commission.
Horizontal control by Mississippi River Commission and Corps of Engineers,
U. S. Army, Vicksburg District.
Vertical control by Mississippi River Commission and Corps of Engineers,
U. S. Army, Vicksburg District.
Topography by Corps of Engineers, U. S. Army, Vicksburg District, 1930-31.
Revised by Mississippi River Commission, 1932-35.
Political boundaries are shown according to best available information,
and are subject to change except where established by court decision.
Area outside Alluvial Valley taken from aerial photographs and is not contoured.
Polyconic Projection, North American Datum.



Contour interval 5 feet
Datum is mean gulf level at Biloxi, Mississippi. Elevations differ from mean sea level elevations as determined
by the U. S. Coast and Geodetic Survey, by small fractions of a foot. Persons interested may secure elevations of bench
marks as determined by the latest U. S. C. & G. S. adjustment, by applying to the U. S. Coast and Geodetic Survey.
FIVE THOUSAND YARD GRID COMPUTED FROM "GRID SYSTEM FOR PROGRESSIVE MAPS"
IN THE U. S. ZONE C. U. S. G. S. SPECIAL PUBLICATION NO. 24

Additional copies may be procured from
The President, Mississippi River Commission,
Vicksburg, Miss. 20 cents per copy

CORPS OF ENGINEERS, U. S. ARMY MAP SERVICE, 101060
12-49 1949
LEGEND
Levee
Retards and dikes
Revetment
River Gage
Levee mile post
Levee station
Towhead
LMP
L.S.
TH

U.S.G.S.
FILE COPY
USCS
Historical File
Topographic Division
HISTORICAL

HARD IMPERVIOUSLY SURFACED ROADS
OTHER MAIN TRAVELED ROADS, GRAVEL