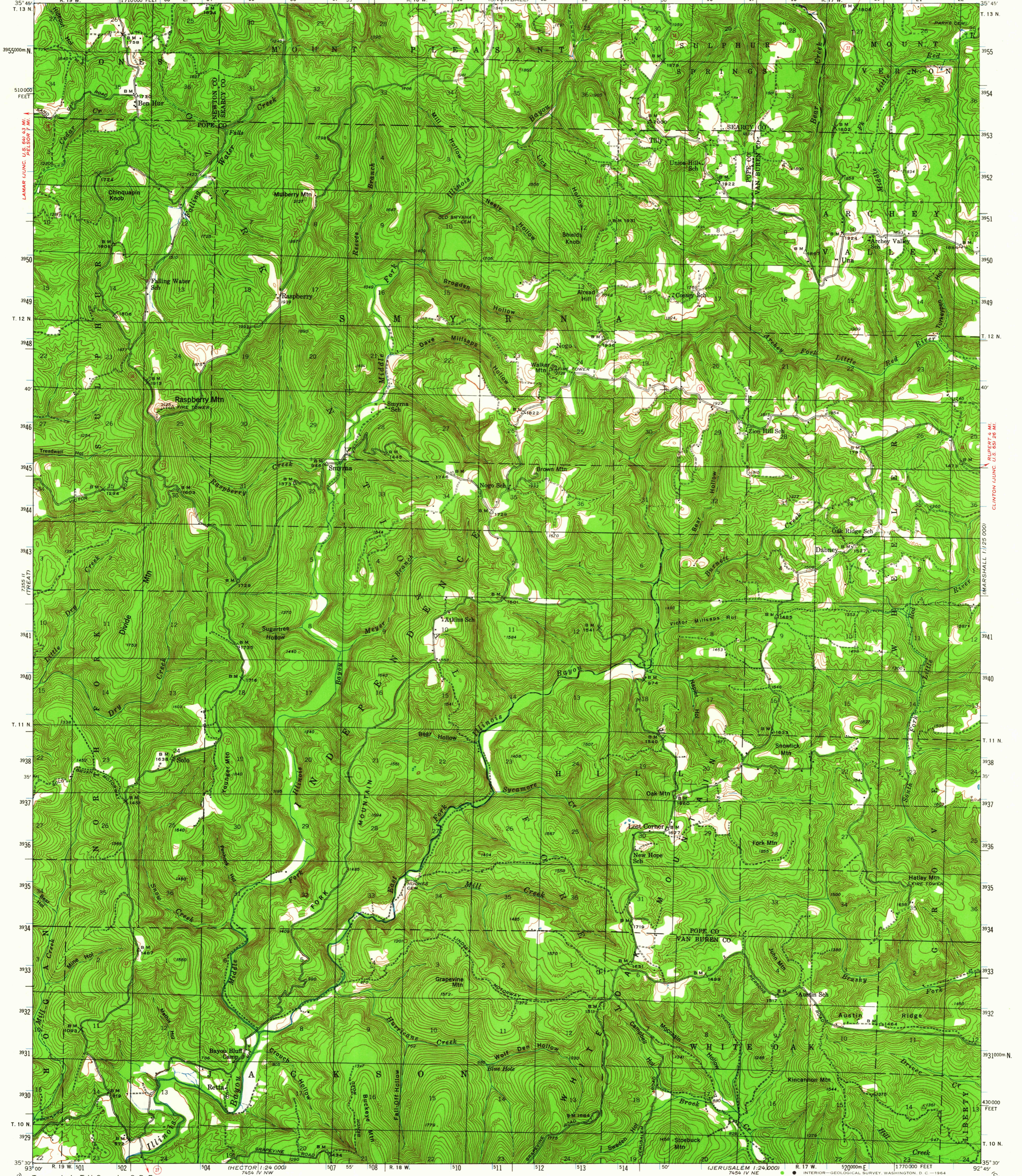


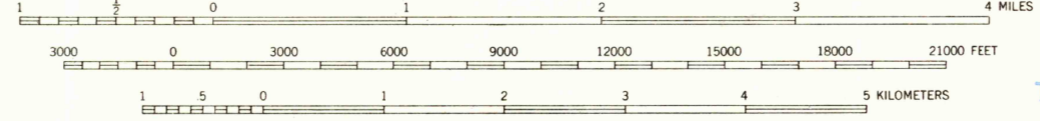
WITT SPRINGS 1.5 MI.

WITT SPRINGS 2.5 MI.



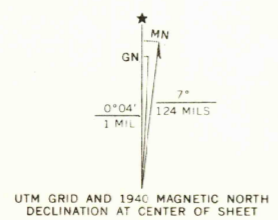
Topography by T. V. Cummins, S. D. Farmer,  
L. E. Williams, and Max Zar  
Surveyed in 1939-1940

SCALE 1:62500



CONTOUR INTERVAL 40 FEET  
DATUM IS MEAN SEA LEVEL

ROAD CLASSIFICATION  
Light-duty ——— Unimproved dirt - - - - -  
State Route



INTERIOR-GEOLOGICAL SURVEY, WASHINGTON, D. C.—1964  
Polyconic projection, 1927 North American datum  
10,000-foot grid based on Arkansas (North)  
rectangular coordinate system  
1000-meter Universal Transverse Mercator grid ticks,  
zone 15, shown in blue

SMYRNA, ARK.  
N 3530—W 9245/15

1940

AMS 7455 III—SERIES V784

FOR SALE BY U. S. GEOLOGICAL SURVEY, DENVER 25, COLORADO OR WASHINGTON 25, D. C.  
AND BY THE ARKANSAS GEOLOGICAL AND CONSERVATION COMMISSION, LITTLE ROCK, ARKANSAS  
A FOLDER DESCRIBING TOPOGRAPHIC MAPS AND SYMBOLS IS AVAILABLE ON REQUEST

USGS  
Historical File  
Topographic Division

U.S.G.S.  
FILE COPY  
TOPOGRAPHIC DIVISION

NOV 4 1964

3570