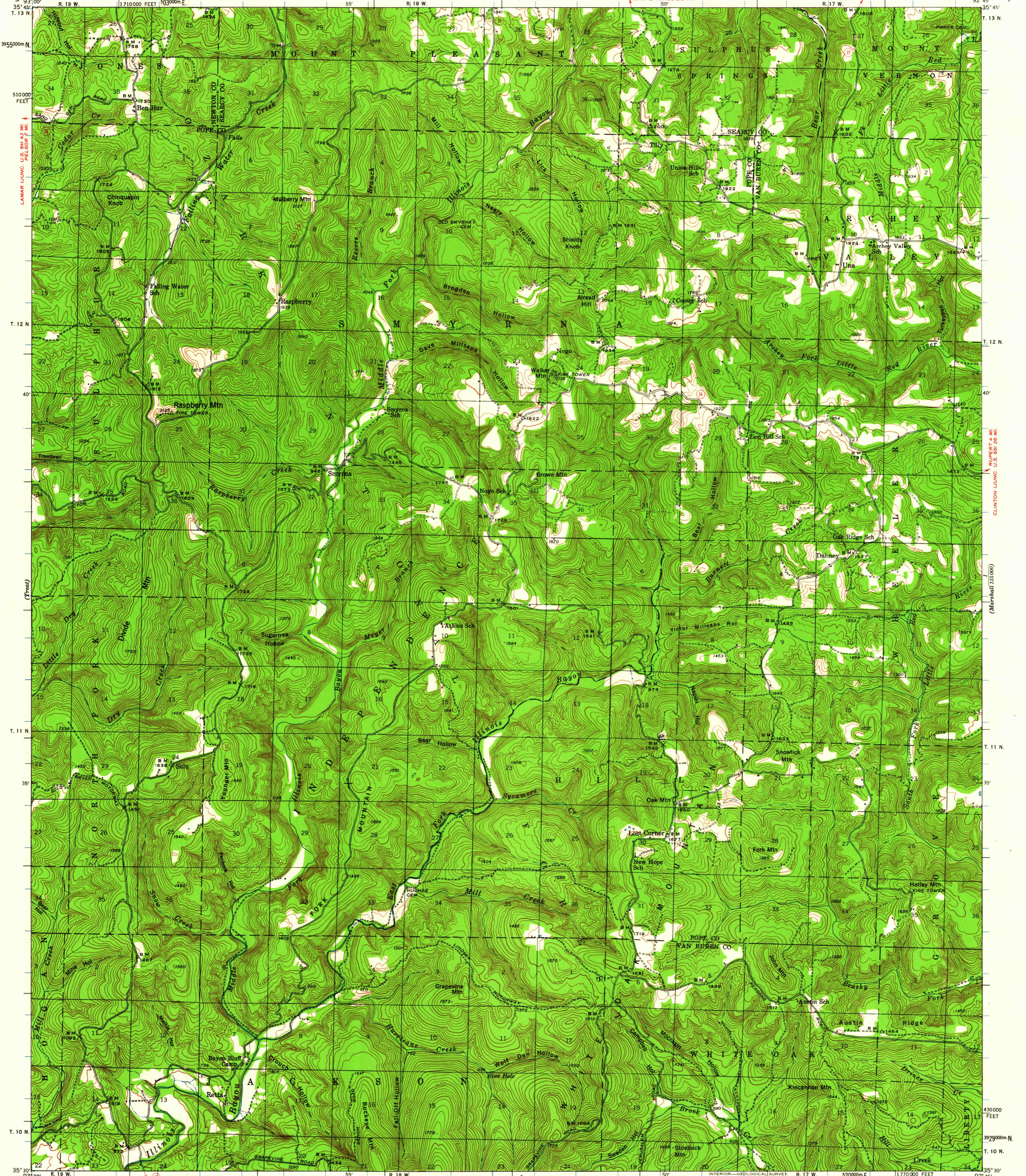


WITT SPRINGS 1.5 MI. (Snowball)  
WITT SPRINGS 2.5 MI.



Topography by T. V. Cummins, S. D. Farmer,  
L. E. Williams, and Max Zar  
Surveyed in 1939-1940

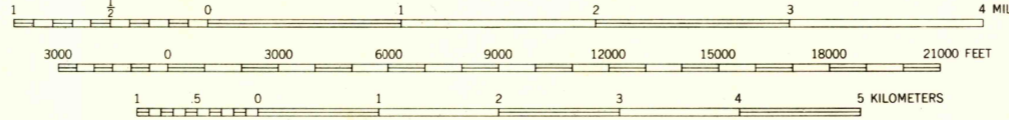
RUSSELLVILLE (JUNC. U.S. 64) 22 MI.  
MORRILLTON (JUNC. U.S. 50) 26 MI.

SCALE 1:62500

Interior-Geological Survey, Washington, D. C. - 1961  
MR 0080  
Polyconic projection. 1927 North American datum  
10,000-foot grid based on Arkansas (North)  
rectangular coordinate system  
1000-meter Universal Transverse Mercator grid ticks,  
zone 15, shown in blue

ROAD CLASSIFICATION  
Light-duty ——— Unimproved dirt - - - - -  
State Route ○

TRUE NORTH  
MAGNETIC NORTH  
APPROXIMATE MEAN DECLINATION, 1940



CONTOUR INTERVAL 40 FEET  
DATUM IS MEAN SEA LEVEL

FOR SALE BY U. S. GEOLOGICAL SURVEY, WASHINGTON 25, D. C.  
A FOLDER DESCRIBING TOPOGRAPHIC MAPS AND SYMBOLS IS AVAILABLE ON REQUEST

USGS  
Historical File  
Topographic Division

U.S.G.S.  
FILE COPY  
TOPOGRAPHIC DIVISION

SMYRNA, ARK.  
N 3530-W9245/15  
1940

JAN 19 1962

1005