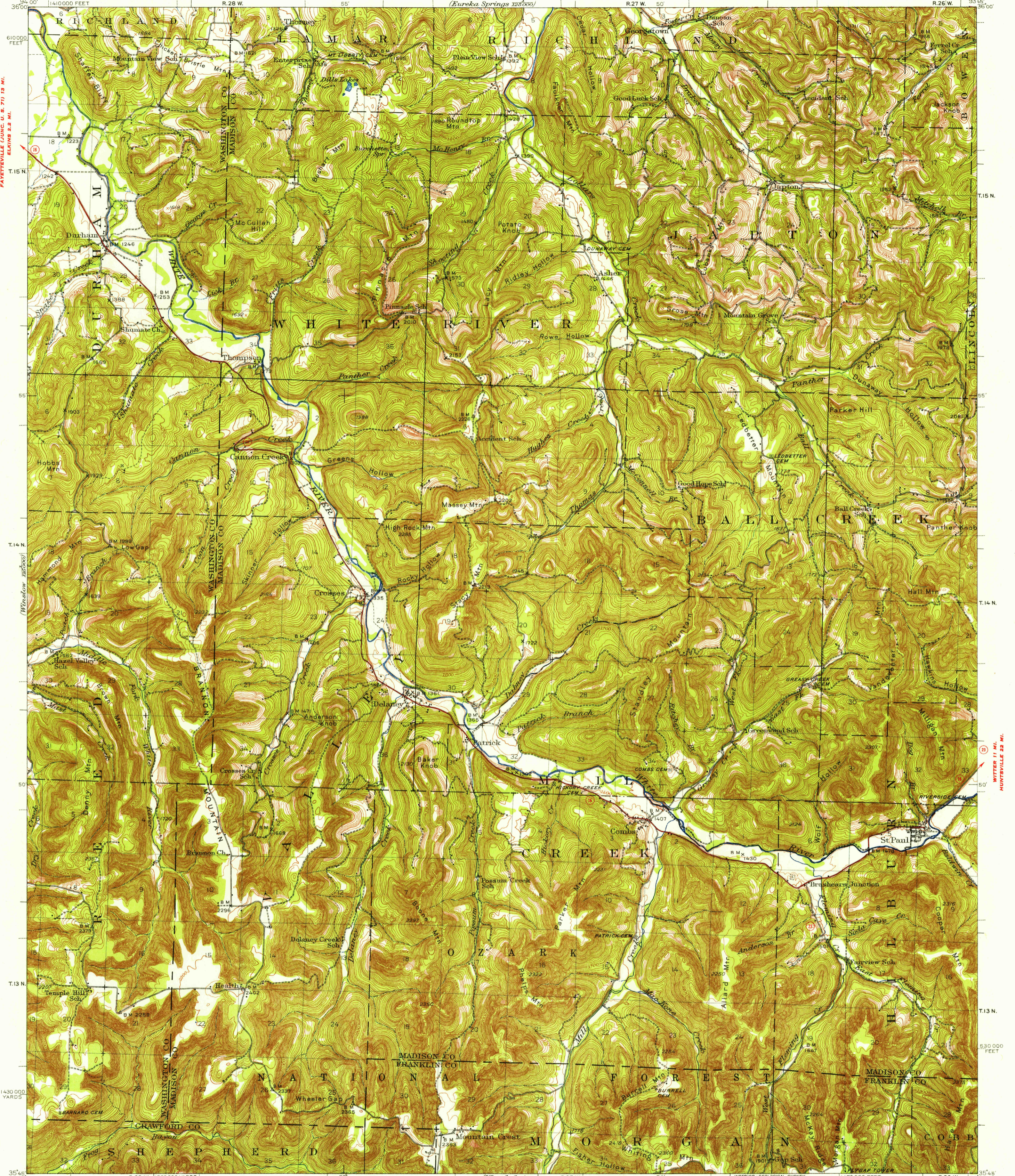


(Eureka Springs 222000)



PAYETTEVILLE (JUNC. U. S. 71) 13 MI.

HUNTSVILLE 23 MI.

Map by the Geological Survey
1943

ROAD CLASSIFICATION

Heavy-duty ——— 4 LANE 16 LANE Light-duty ———
Medium-duty - - - 4 LANE 6 LANE Unimproved dirt - - - - -
U. S. Route State Route

APPROXIMATE MEAN
DECLINATION, 1943

SCALE 1:62500

CONTOUR INTERVAL 20 FEET
DATUM IS MEAN SEA LEVEL

3000 0 3000 6000 9000 12000 15000 18000 21000 FEET

1 0.5 0 0.5 1 2 3 4 5 KILOMETERS

U.S.G.S.
TOPOGRAPHIC DIVISION

CASS 6.2 MI.
OZARK (JUNC. U. S. 64) 23 MI.

Polyconic projection, 1927 North American datum
5000 yard grid based on U.S. zone system D
10000 foot grid based on Arkansas (North)
rectangular coordinate system

FOR SALE BY U.S. GEOLOGICAL SURVEY, FEDERAL CENTER, DENVER, COLORADO OR WASHINGTON 25, D.C.
AND BY THE ARKANSAS RESOURCES AND DEVELOPMENT COMMISSION, LITTLE ROCK, ARKANSAS
A FOLDER DESCRIBING TOPOGRAPHIC MAPS AND SYMBOLS IS AVAILABLE ON REQUEST

U.S.G.S.
FILE COPY
TOPOGRAPHIC DIVISION

ST. PAUL, ARK.
N 3645 - W 9345/15
1943

FEB 21 1956