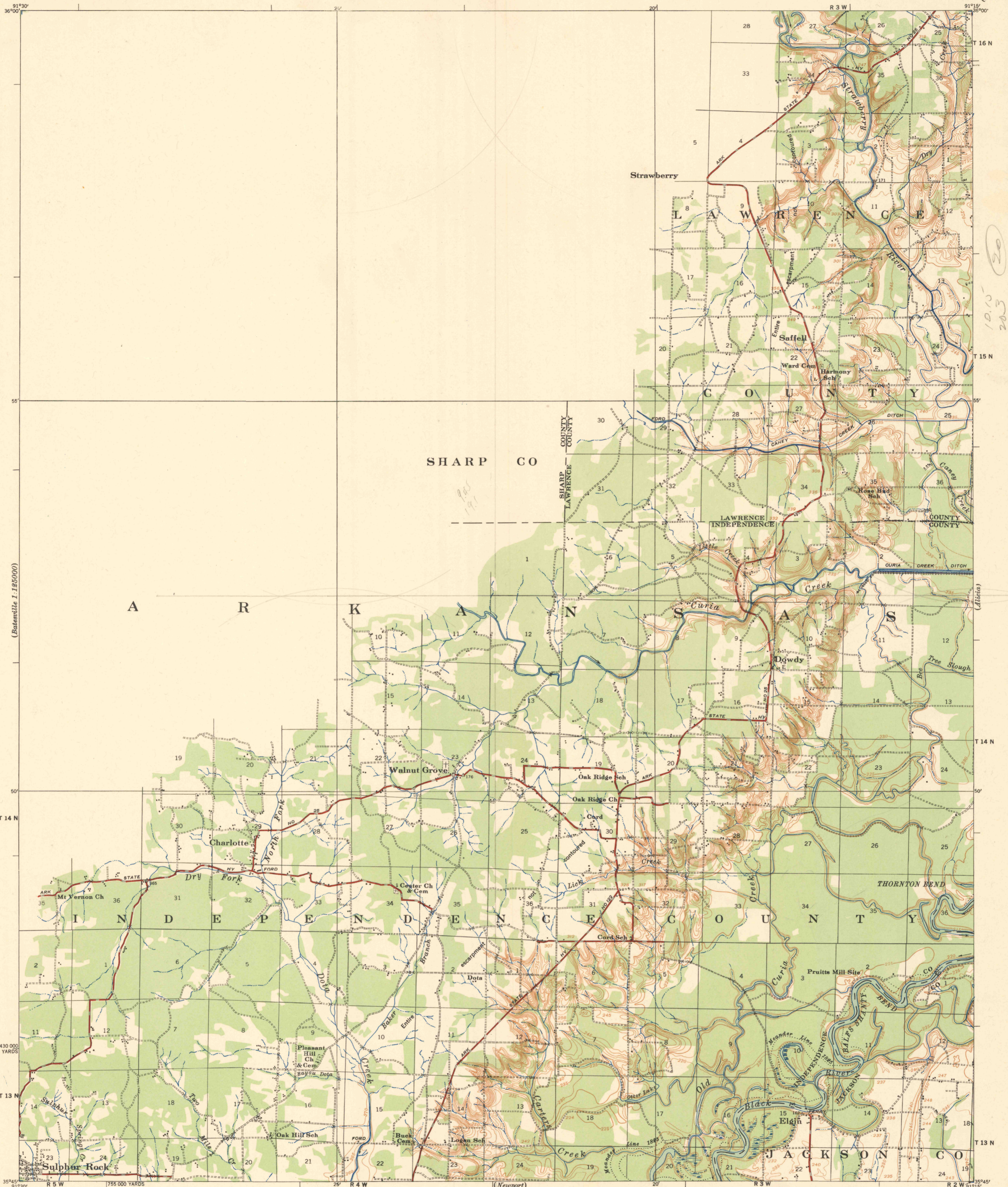


(Pouchokan)

1010  
203  
20

(Alitica)

(Thickman)

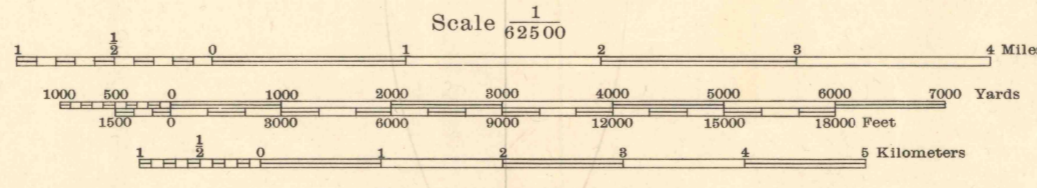


(Batesville 1:125000)

1:430 000  
T 13 N

(Batesville 1:125000)

Prepared under the direction of the President, Mississippi River Commission.  
Horizontal control by Corps of Engineers, U. S. Army, Memphis District.  
Vertical control by Corps of Engineers, U. S. Army, Memphis District.  
Topography by Corps of Engineers, U. S. Army, Memphis District, 1931.  
Revised by Mississippi River Commission, 1932-35.  
Political boundaries are shown according to best available information,  
and are subject to change except where established by court decision.  
Area outside Alluvial Valley taken from aerial photographs and is not contoured.  
Polyconic Projection, North American Datum.



Datum is mean gulf level at Biloxi, Mississippi. Elevations differ from mean sea level elevations as determined by the U. S. Coast and Geodetic Survey, by small fractions of a foot. Persons interested may secure elevations of bench marks as determined by the latest U. S. C. & G. S. adjustment by applying to the U. S. Coast and Geodetic Survey.  
FIVE THOUSAND YARD GRID COMPUTED FROM "GRID SYSTEM FOR PROGRESSIVE MAPS IN THE U. S." ZONE C, U. S. C. & G. S. SPECIAL PUBLICATION NO. 55

Additional copies may be procured from  
The President, Mississippi River Commission  
Vicksburg, Miss. 10 cents per copy

ENGINEER REPRODUCTION PLANT, U. S. ARMY, FORT HUMPHREYS, D. C. 10112  
1935

LEGEND

Levee	Retards and dikes	Revetment	River Gage	Levee mile post	Levee station	Towhead
				L M P	L S	T H

Distances above Mouth of Black River are shown at 5 mile intervals.

HARD IMPERVIOUSLY SURFACED ROADS  
OTHER MAIN TRAVELLED ROADS, GRAVEL

FILE COPY  
MAP INFORMATION OFFICE