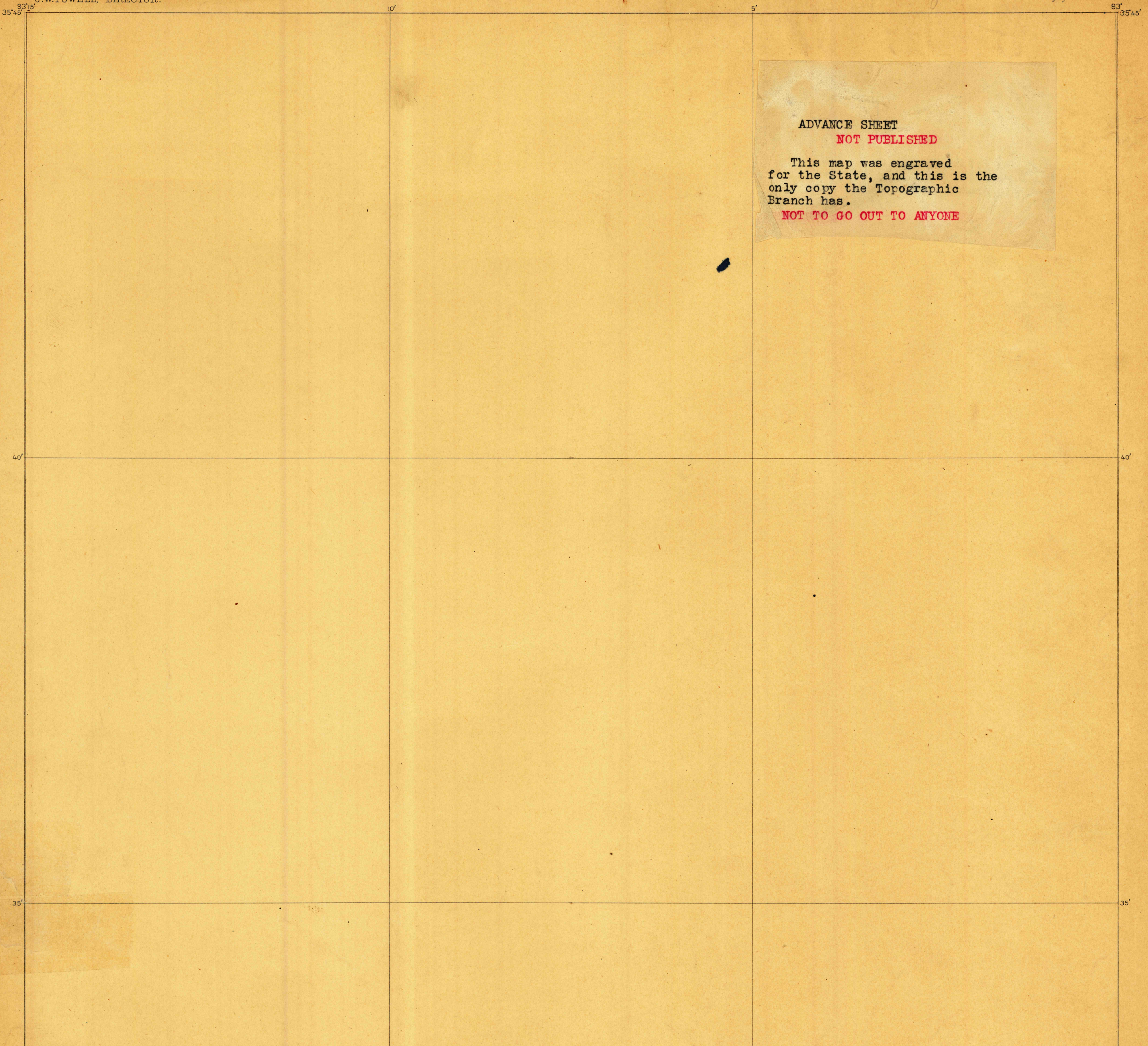
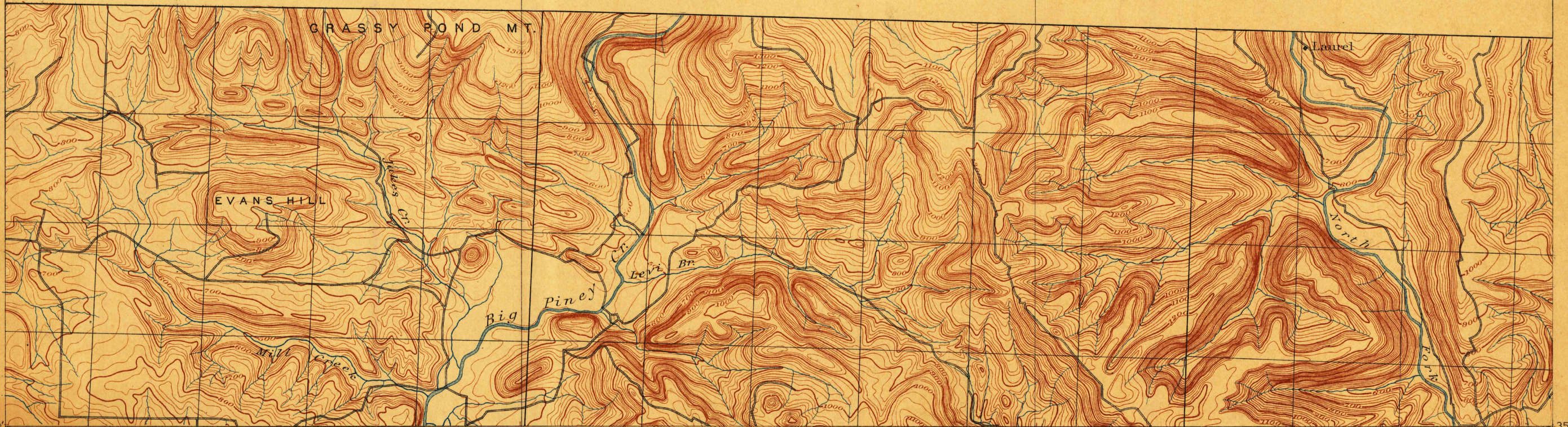


South Portion of Treat, Ark.



ADVANCE SHEET
NOT PUBLISHED
This map was engraved
for the State, and this is the
only copy the Topographic
Branch has.
NOT TO GO OUT TO ANYONE



Henry Gannett, Chief Topographer.
Triangulation by S.S. Gannett.
Topography by the Geol. Survey of Arkansas.

Scale 62500
Miles
Contour Interval 20 feet

USGS
Historical File
Topographic Division

Treat, ARK
SURVEYED 1889
FEB 13 1903

#67