

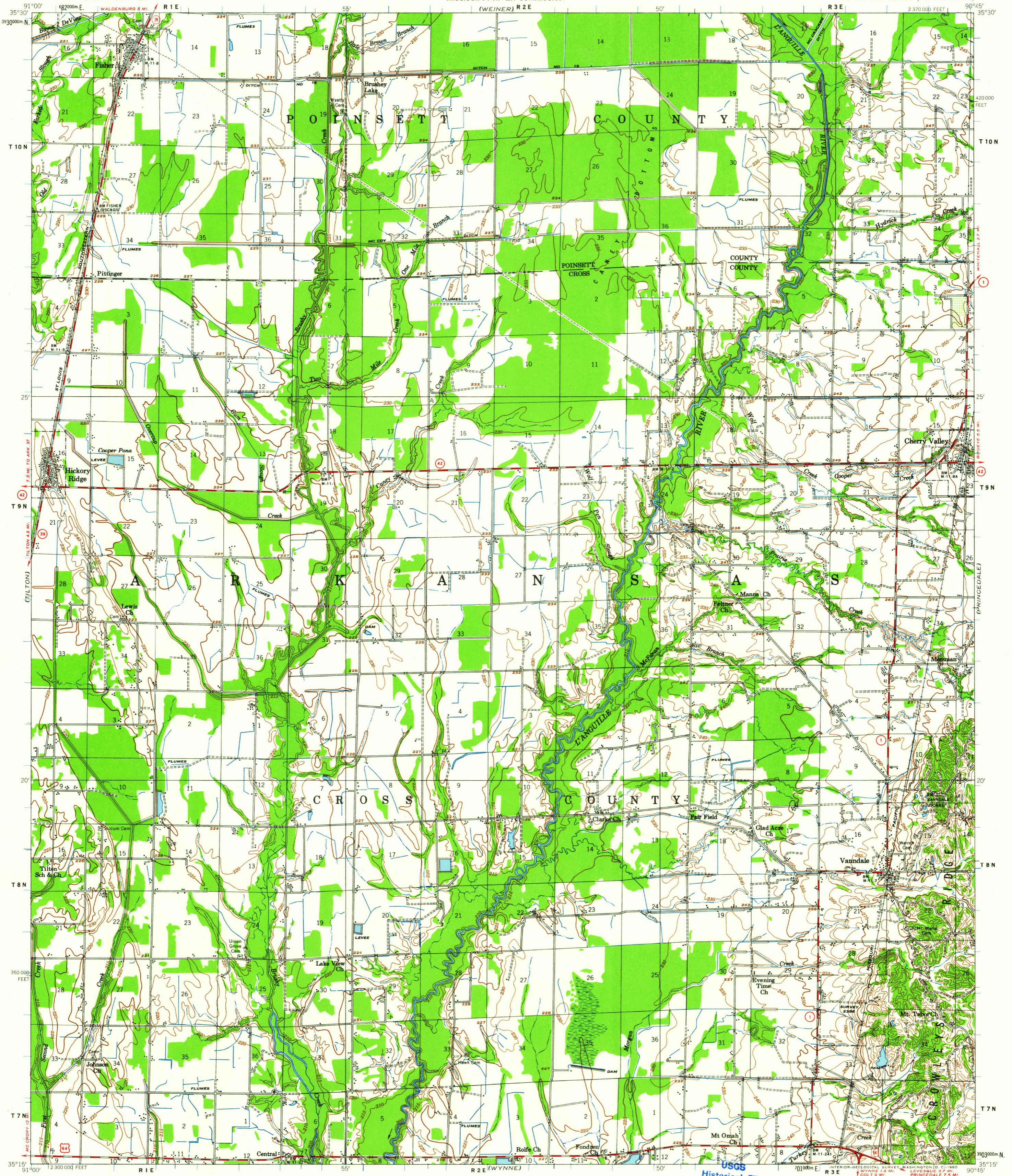
(TUCKERMAN)

UNITED STATES  
DEPARTMENT OF THE INTERIOR  
GEOLOGICAL SURVEY

UNITED STATES ARMY  
CORPS OF ENGINEERS  
MISSISSIPPI RIVER COMMISSION

VANDALE QUADRANGLE  
ARKANSAS  
15 MINUTE SERIES (TOPOGRAPHIC)

(DEE)

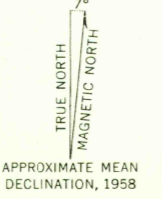


Maped and edited by the Mississippi River Commission  
Published by the Geological Survey

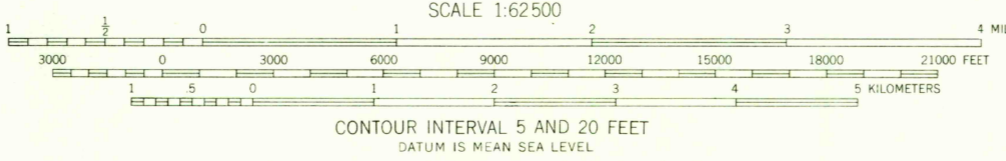
Control by USC&GS and USCE  
Topography from aerial photographs by photogrammetric methods  
and by plane-table surveys 1958  
Aerial photographs taken 1954 and 1957

Polyconic projection. 1927 North American datum  
10,000-foot grid based on Arkansas coordinate system, north zone  
1000-meter Universal Transverse Mercator grid ticks,  
zone 15, shown in blue

Unchecked elevations are shown in brown

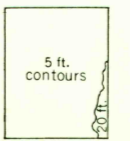


APPROXIMATE MEAN  
DECLINATION, 1958



THIS MAP COMPLIES WITH NATIONAL MAP ACCURACY STANDARDS  
FOR SALE BY U. S. GEOLOGICAL SURVEY, DENVER 25, COLORADO, OR WASHINGTON 25, D. C.,  
ARKANSAS GEOLOGICAL AND CONSERVATION COMMISSION, LITTLE ROCK, ARKANSAS,  
AND MISSISSIPPI RIVER COMMISSION, VICKSBURG, MISSISSIPPI  
A FOLDER DESCRIBING TOPOGRAPHIC MAPS AND SYMBOLS IS AVAILABLE ON REQUEST

USGS  
Historical File  
Topographic Division



ROAD CLASSIFICATION

Heavy-duty	Light-duty
Medium-duty	Unimproved dirt
U. S. Route	State Route

U.S.G.S. VANNDALE, ARK.  
FILE COPY  
TOPOGRAPHIC DIVISION  
1958

JUN 24 1950

2060