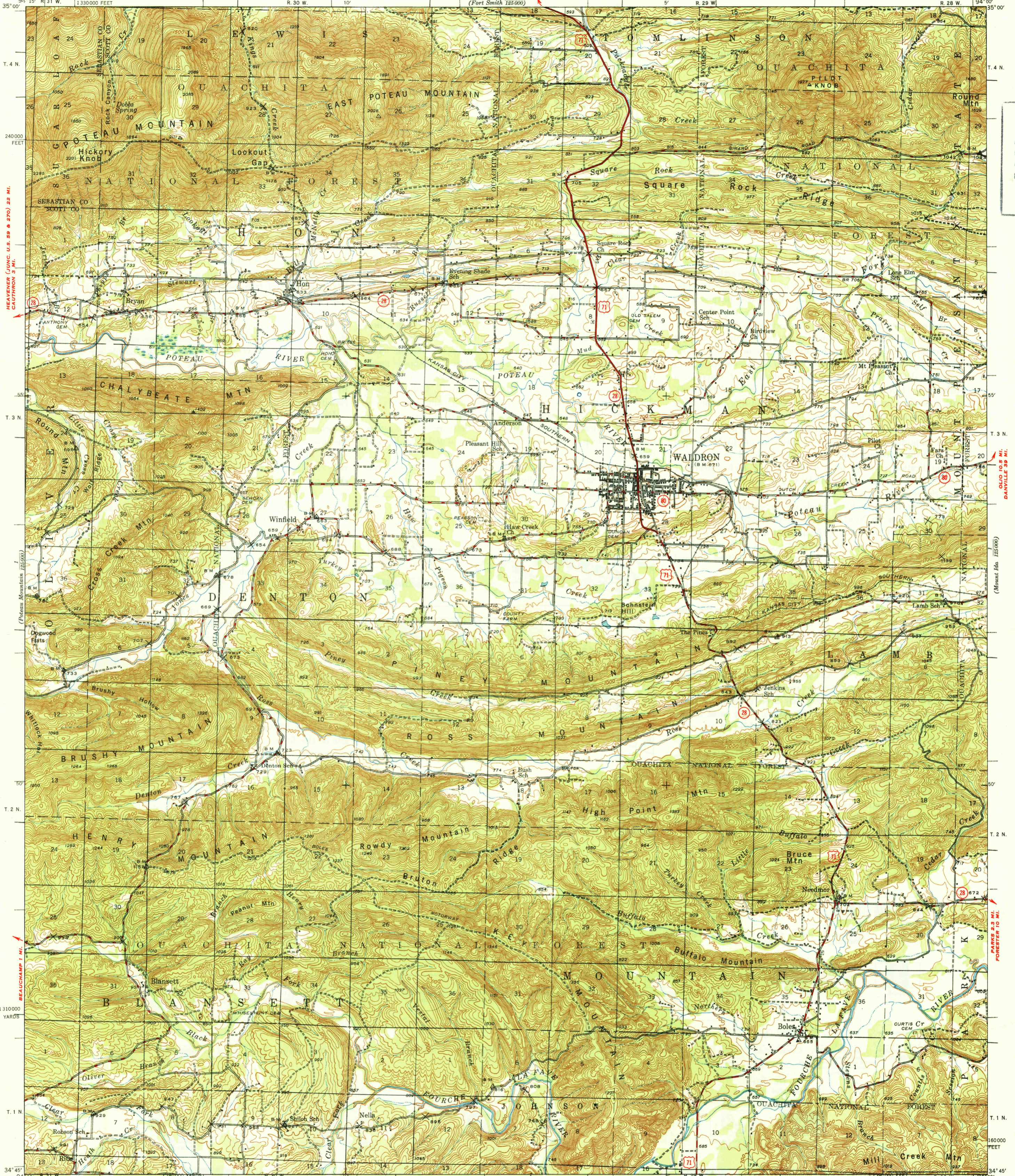


(Fort Smith)
1:250,000

UNITED STATES
DEPARTMENT OF THE INTERIOR
GEOLOGICAL SURVEY

ARKANSAS
WALDRON QUADRANGLE
15-MINUTE SERIES

U. S. G. S.
FILE COPY
Inspection and Editing.



U. S. G. S.
FILE COPY
Inspection and Editing.

HEAVENER (UNC. U.S. 59 & 270) 22 MI.
CAUTION 3 MI.

(Poteau Mountain 1:250,000)

DAWVILLE 39 MI.
(Mount Ida 1:250,000)

PARIS 53 MI.
FORESTER 10 MI.

(Mount Ida)
1:250,000

Topography by Daniel Kennedy, S. B. O'Hara, J. P. Rydeen,
E. J. Fennell, S. D. Farmer, and C. E. Harding
Surveyed in 1937-1939

(Poteau Mountain 1:250,000)

1.2 MI. TO U.S. 270
MENA 23 MI.

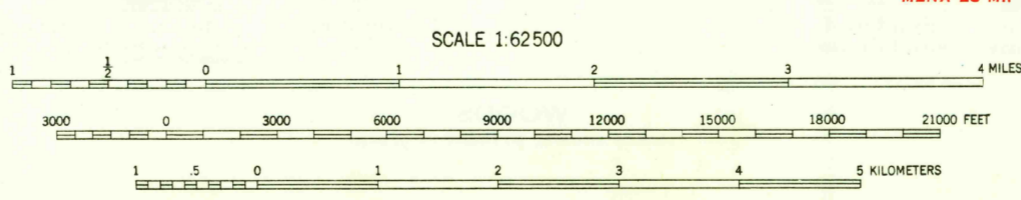
USGS
Historical File
Topographic Division

Polyconic projection, 1927 North American datum
5000 yard grid based on U. S. zone system, D
10000 foot grid based on Arkansas (North)
rectangular coordinate system

ROAD CLASSIFICATION

HARD-SURFACE ALL WEATHER ROADS DRY WEATHER ROADS
Heavy-duty 4 LANE LANE Improved dirt
Medium-duty 4 LANE LANE Unimproved dirt
Loose-surface, graded, or narrow hard-surface
U. S. Route State Route

TRUE NORTH
MAGNETIC NORTH
APPROXIMATE MEAN
DECLINATION, 1939



Contour interval 20 feet
Datum is mean sea level

WALDRON, ARK.
Edition of 1949
"First published as a
preliminary edition in 1941"

U. S. G. S.
FILE COPY
Inspection and Editing.

N3445-W9400/15
MAY 5 1949 2110