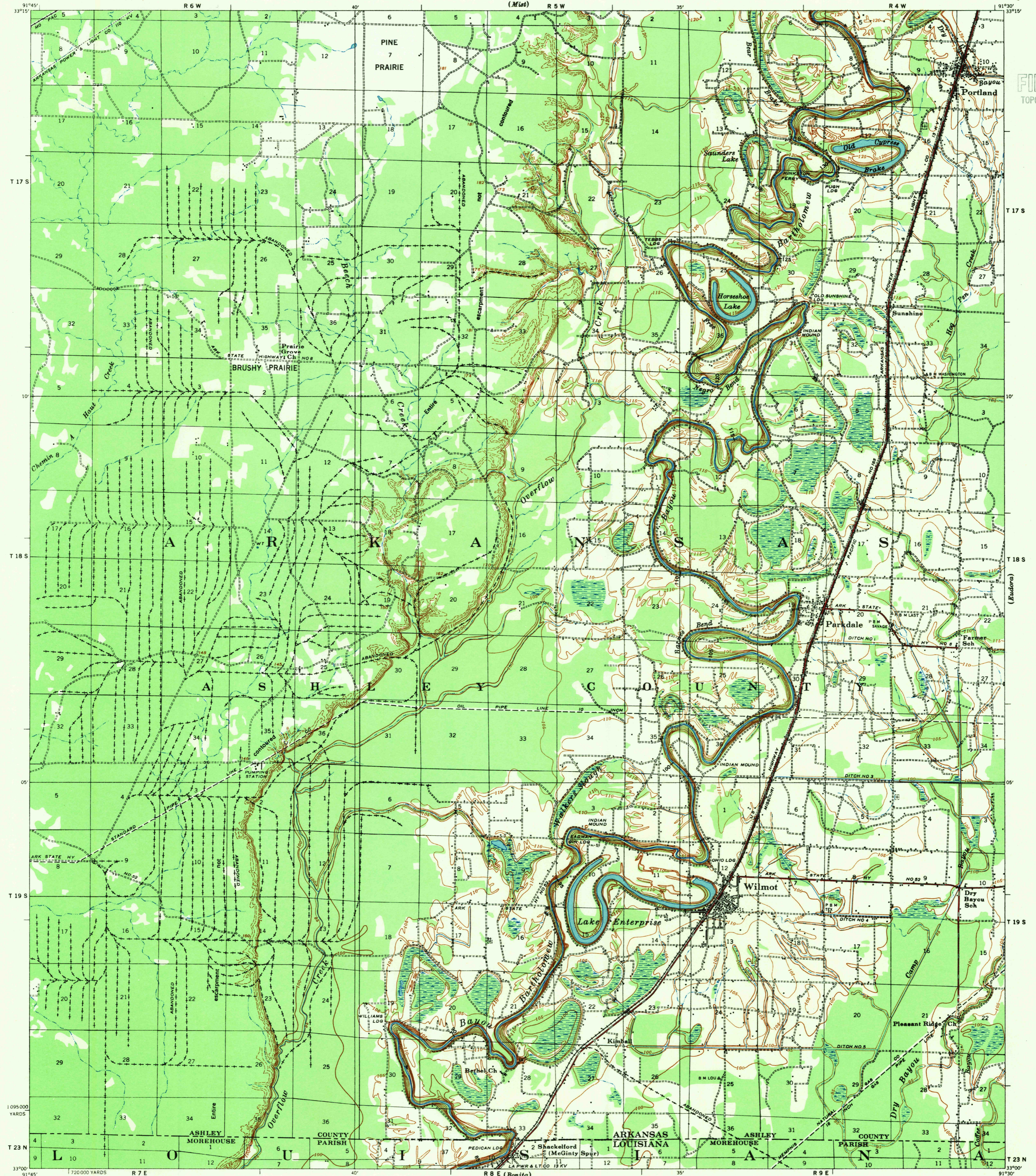
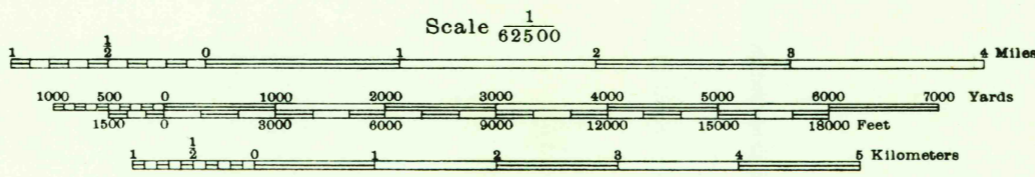


(Lake Village)

U.S.G.S.
FILE COPY
TOPOGRAPHIC DIVISION



Prepared under the direction of the President, Mississippi River Commission, Horizontal control by Mississippi River Commission and Corps of Engineers, U. S. Army, Vicksburg District. Vertical control by Mississippi River Commission and Corps of Engineers, U. S. Army, Vicksburg District. Topography by Corps of Engineers, U. S. Army, Vicksburg District, 1930-31. Revised by Mississippi River Commission, 1932-35. Political boundaries are shown according to best available information, and are subject to change except where established by court decision. Area outside Alluvial Valley taken from aerial photographs and is not contoured. Polyconic Projection, North American Datum.



Scale 1/62500
Contour interval 5 feet
Datum is mean gulf level at Biloxi, Mississippi. Elevations differ from mean sea level elevations as determined by the U. S. Coast and Geodetic Survey, by small fractions of a foot. Persons interested may secure elevations of bench marks as determined by the latest U. S. C. & G. S. adjustment, by applying to the U. S. Coast and Geodetic Survey.

PRINTED BY ARMY MAP SERVICE, CORPS OF ENGINEERS, 9-54, 101072

LEGEND
Levee
Retards and dikes
Revetment
River Gate
Levee mile post
Levee station
Towhead
L M P
L S
T M

APPROXIMATE MEAN DECLINATION 1930 NO ANNUAL MAGNETIC CHANGE
Distances above mouth of Bayou Bartholomew are shown at 5 mile intervals.

HARD IMPERVIOUSLY SURFACED ROADS
OTHER MAIN TRAVELED ROADS, GRAVEL

Additional copies may be procured from The President, Mississippi River Commission, Vicksburg, Miss. 20 cents per copy

USGS
Historical File
Topographic Division

WILMOT, ARK.-LA.
EDITION OF 1935
Printed for G.S. by A.M.S.
OCT 20 1954 (1000)

U.S.G.S.
FILE COPY
TOPOGRAPHIC DIVISION

(Oak Grove)