

CLIFTON, ARIZONA-NEW MEXICO

30X60 MINUTE SERIES (TOPOGRAPHIC)

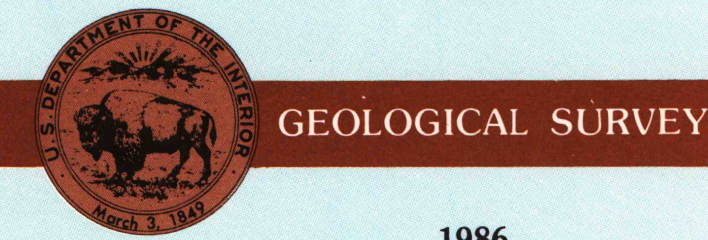
Clifton ARIZONA-NEW MEXICO

1:100 000-scale metric topographic map



30 X 60 MINUTE QUADRANGLE SHOWING

- Contours and elevations in meters
- Highways, roads and other manmade structures
- Water features
- Woodland areas
- Geographic names



Produced by the United States Geological Survey  
 Compiled from USGS 1:24 000 and 1:62 500-scale topographic maps dated 1949-1972. Planimetry revised from aerial photographs taken 1983-84 and other source data. Revised information not field checked.  
 Map edited 1986.  
 Projection and 10 000-meter grid, zone 12 Universal Transverse Mercator.  
 25 000-foot grid ticks based on Arizona coordinate system, east zone and New Mexico coordinate system west zone. 1927 North American Datum.  
 To place on the predicted North American Datum 1983 move the projection lines 4 meters south and 59 meters east. There may be private landholdings within the boundaries of the National or State reservations shown on this map.

CONTOUR INTERVAL 50 METERS  
 NATIONAL GEODETIC DATUM OF 1929  
 ELEVATIONS SHOWN TO THE NEAREST METER

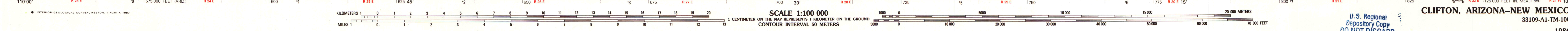
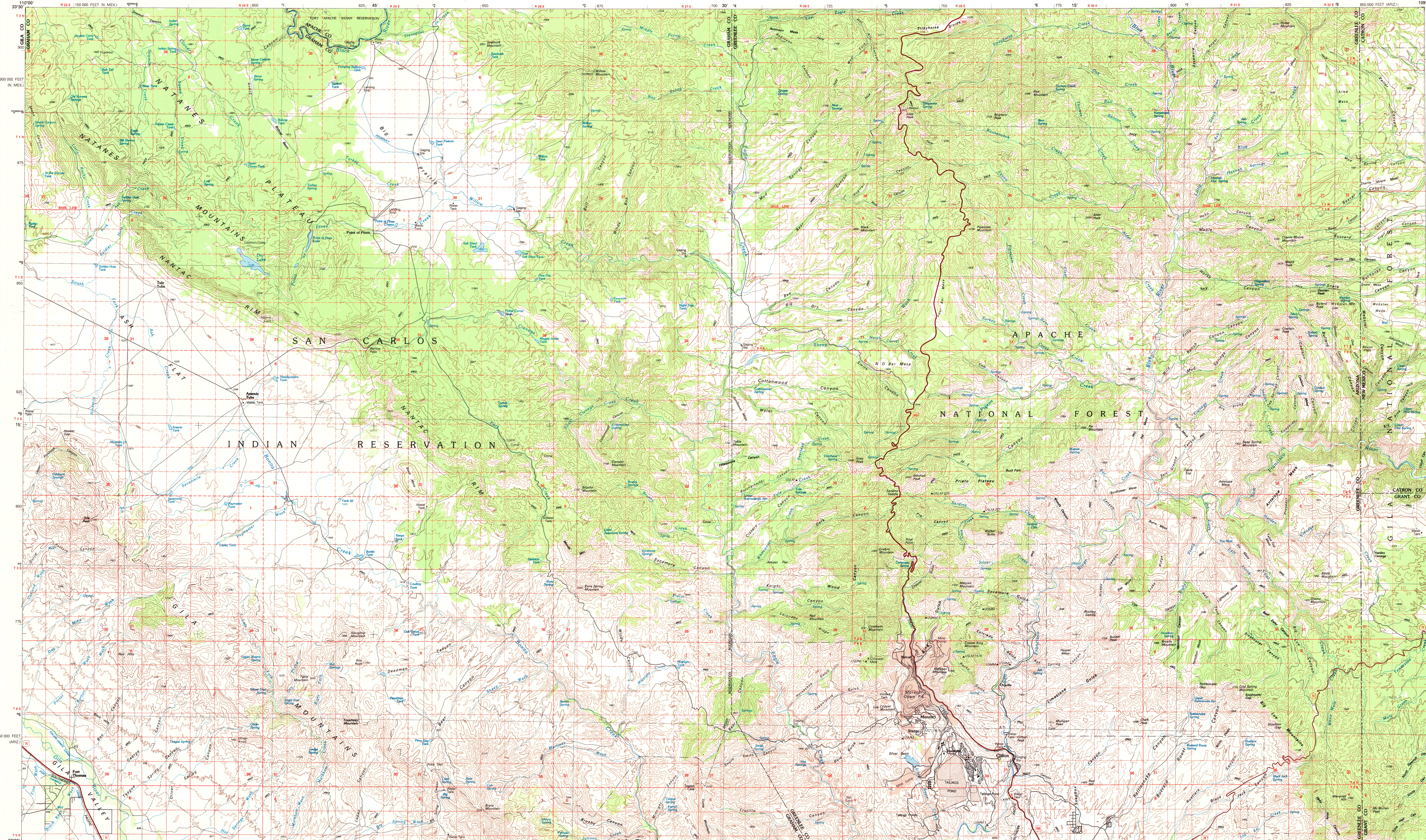
THIS MAP COMPLIES WITH NATIONAL MAP ACCURACY STANDARDS

CONVERSION TABLE		DECLINATION DIAGRAM		ADJOINING MAPS	
Meters	Feet			1	2
1	3.2808			4	5
2	6.5617	6	7		
3	9.8425	8	8		
4	13.1234			1	Seneca
5	16.4042			2	Tuberoso Mountains
6	19.6850			3	Mogollon Mountains
7	22.9659			4	McGuire
8	26.2467			5	Silver City
9	29.5275				
10	32.8084				

FOR SALE BY U.S. GEOLOGICAL SURVEY, DENVER, COLORADO 80225  
 OR RESTON, VIRGINIA 22092

Topographic Map Symbols

- Primary highway, hard surface
- Secondary highway, hard surface
- Light duty road, principal street, hard or improved surface
- Other road or street, soil
- Route marker: Interstate, U. S., State
- Railroad: standard gage; narrow gage
- Bridge: overpass; underpass
- Tunnel: road, railroad
- Built-up area: locality, elevation
- Airport: landing field; landing strip
- National boundary
- State boundary
- County boundary
- National or State reservation boundary
- Land grant boundary
- U. S. public lands survey: range, township, section
- Range, township, section line: protracted
- Power transmission line: pipeline
- Dam: dam with lock
- Cemetery, building
- Wooded: water wall; spring
- Mine shaft: ant or cave; mine, quarry; gravel pit
- Campground; picnic area; U. S. location monument
- Ruins: old building
- Disturbed surface: strip mine, lava, sand
- Contours: index, intermediate, supplementary
- Bathymetric contours: index, intermediate
- Stream, lake: perennial, intermittent
- Rapids, large and small; falls, large and small
- Area to be submerged; marsh, swamp
- Land subject to controlled inundation, woodland
- Scrub, mangrove
- Orchard; vineyard



U.S. Regional Depository Copy DO NOT DISCARD  
 CLIFTON, ARIZONA-NEW MEXICO 33109-A1-TM-100 1986

MAR 18 1987  
 ARTHUR H. ROBINSON MAP LIBRARY University of Wisconsin-Madison  
 8006-918