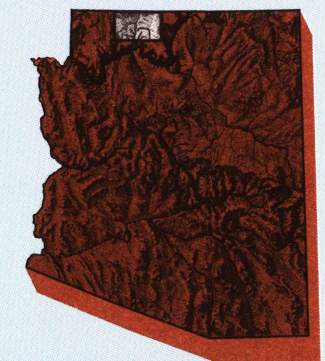


Fredonia

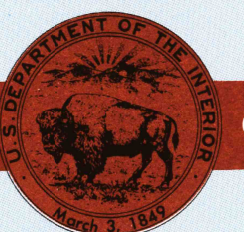
ARIZONA

1:100 000-scale metric
topographic map



30 X 60 MINUTE QUADRANGLE
SHOWING

- Contours and elevations in meters
- Highways, roads and other manmade structures
- Water features
- Woodland areas
- Geographic names



GEOLOGICAL SURVEY

1984

Produced by the United States Geological Survey
Compiled from USGS 1:62 500-scale topographic maps dated 1953-1958. Planimetry revised from aerial photographs taken 1980, and other source data. Revised information not field checked. Map edited 1984
Projection and 10 000-meter grid, zone 12, Universal Transverse Mercator
25 000-foot grid ticks based on Arizona coordinate system, central and west zones. 1927 North American Datum 1983 move the projection lines 6 meters north and 67 meters east
There may be private inholdings within the boundaries of the National and State reservations shown on this map

CONTOUR INTERVAL 50 METERS
NATIONAL GEODETIC VERTICAL DATUM OF 1929

THIS MAP COMPLIES WITH NATIONAL MAP ACCURACY STANDARDS

CONVERSION TABLE

Meters	Feet
1	3.2808
2	6.5617
3	9.8425
4	13.1234
5	16.4042
6	19.6850
7	22.9659
8	26.2467
9	29.5276
10	32.8084

To convert meters to feet multiply by 3.2808
To convert feet to meters multiply by 0.3048

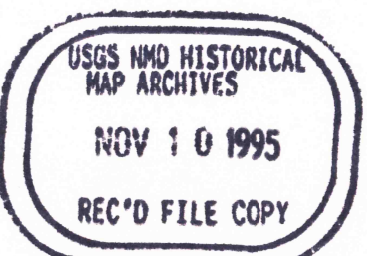
DECLINATION DIAGRAM

ADJOINING MAPS

1	2	3
4	5	6
7	8	9

1 Saint George
2 Kane
3 Smoky Mountain
4 Littlefield
5 Glen Canyon Dam
6 Mt. Timbulla
7 Grand Canyon
8 Tuba City

ISBN 0-607-07484-1
9 780607 074840



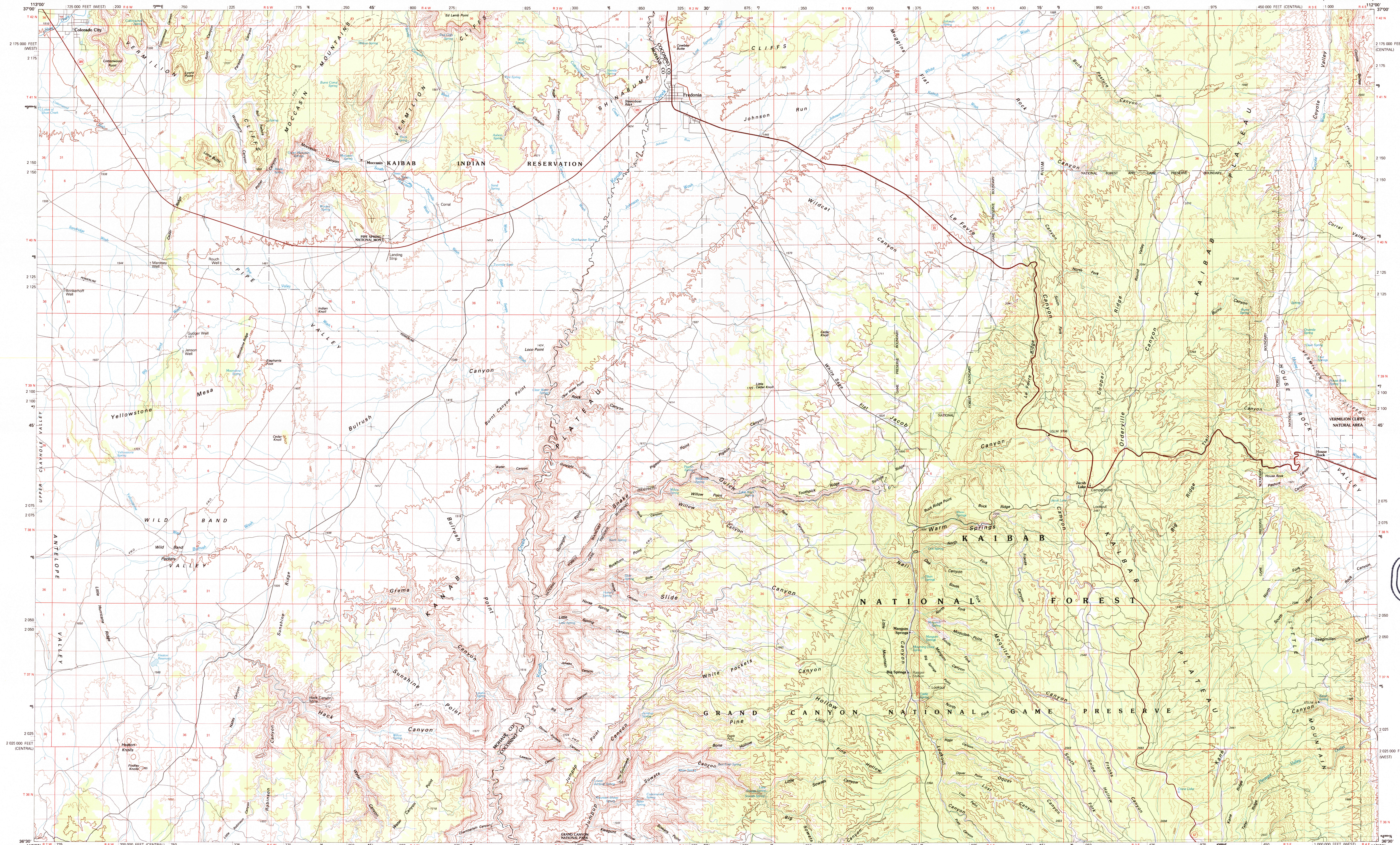
Topographic Map Symbols

- Primary highway, hard surface
- Secondary highway, hard surface
- Light duty road, principal street, hard or improved surface
- Other road or street; trail
- Route marker: interstate; U. S.; State
- Railroad: standard gage; narrow gage
- Bridge: overpass; underpass
- Tunnel: road; railroad
- Built up area; locality; elevation
- Airport; landing field; landing strip
- National boundary
- State boundary
- County boundary
- National or State reservation boundary
- Land grant boundary
- U. S. public lands survey: range, township; section
- Range, township; section line: protracted
- Power transmission line; pipeline
- Dam; dam with lock
- Cemetery; building
- Windmill; water well; spring
- Mine shaft; adit or cave; mine, quarry; gravel pit
- Campground; picnic area; U. S. location monument
- Rune; cliff dwelling
- Disrupted surface: atyp. mine, lava; sand
- Contours: index; intermediate; supplementary
- Bathymetric contours: index; intermediate
- Stream, lake: perennial; intermittent
- Rapids, large and small; falls, large and small
- Area to be submerged; marsh; swamp
- Land subject to controlled inundation; woodland
- Scrub; mangrove
- Orchard; vineyard

A pamphlet describing topographic maps is available on request
FOR SALE BY U.S. GEOLOGICAL SURVEY
DENVER, COLORADO 80225, OR RESTON, VIRGINIA 22092

FREDONIA, ARIZONA

30X60 MINUTE SERIES (TOPOGRAPHIC)



HISTORICAL GEOLOGICAL SURVEY, RESTON, VIRGINIA 22092

FREDONIA, ARIZONA

36112-E1-TM-100

1984