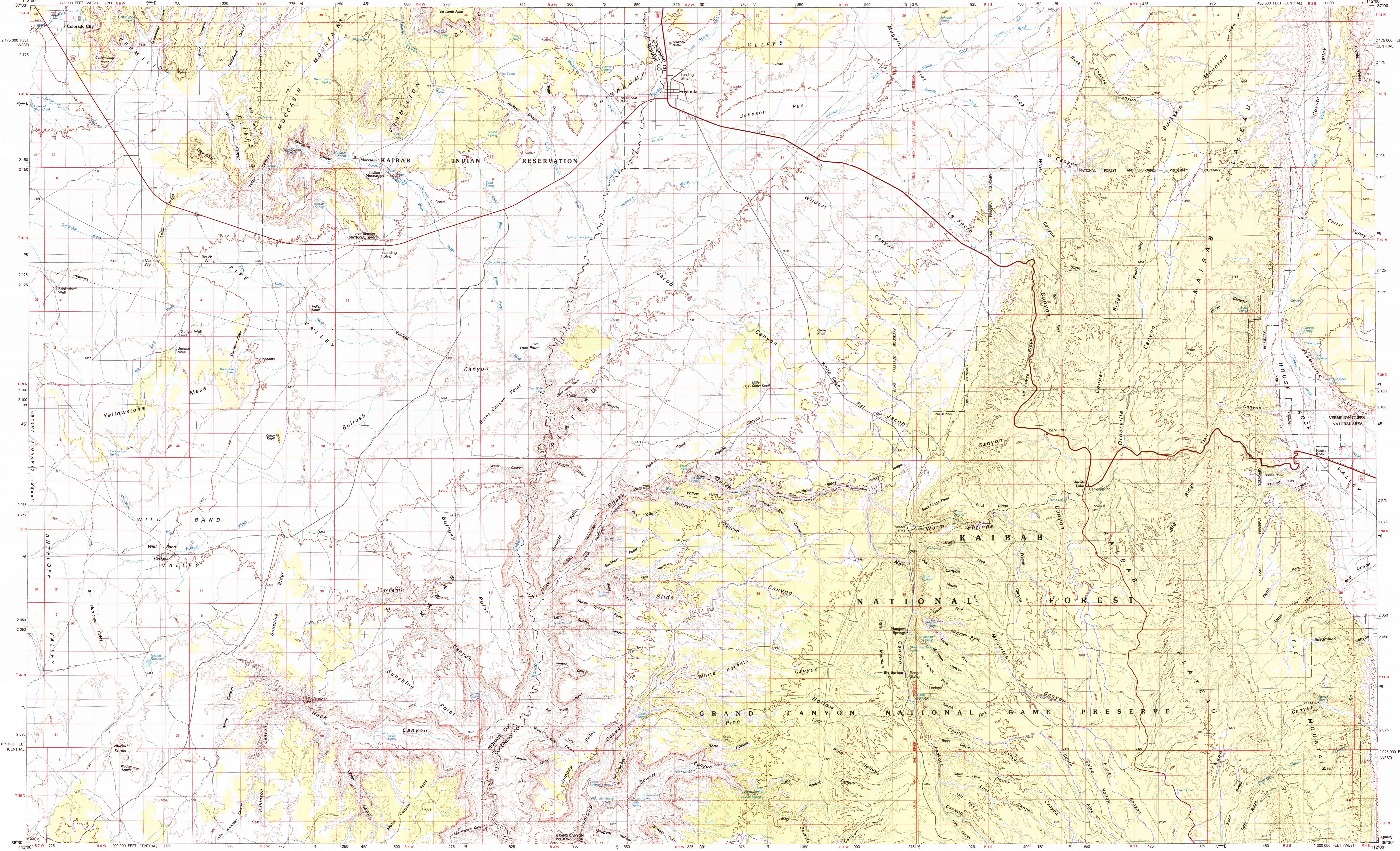


FREDONIA, ARIZONA

30X60 MINUTE SERIES (TOPOGRAPHIC)



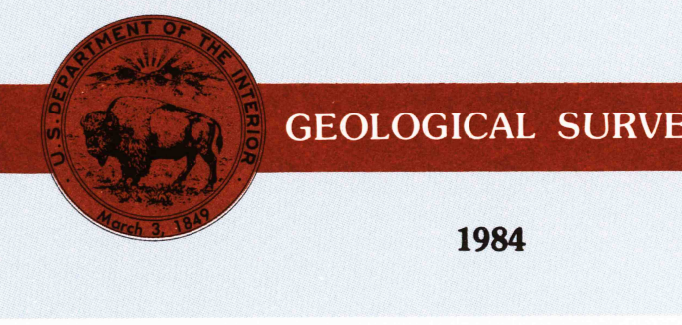
# Fredonia ARIZONA

1:100 000-scale metric topographic map



30 X 60 MINUTE QUADRANGLE SHOWING

- Contours and elevations in meters
- Highways, roads and other manmade structures
- Water features
- Woodland areas
- Geographic names



Produced by the United States Geological Survey  
 Compiled from USGS 1:62 500-scale topographic maps dated 1955-1958. Planimetry revised from aerial photographs taken 1960, and other source data. Revised information not field checked. Map edited 1984.

Projection and 10 000-meter grid, zone 12, Universal Transverse Mercator  
 25 000-foot grid ticks based on Arizona coordinate system, central and west zones, 1927 North American Datum  
 To place on the predicted North American Datum 1983 move the projection lines 6 meters north and 67 meters east  
 There may be private buildings within the boundaries of the National and State reservations shown on this map.

CONTOUR INTERVAL 50 METERS NATIONAL GEODETIC VERTICAL DATUM OF 1929

THIS MAP COMPLIES WITH NATIONAL MAP ACCURACY STANDARDS

CONVERSION TABLE		DECLINATION DIAGRAM		ADJOINING MAPS		
Meters	Feet	GN	MN	1	2	3
1	3.2808		14°	1	2	3
2	6.5617			4	5	
3	9.8425			6	7	
4	13.1234			8	9	
5	16.4042					
6	19.6850					
7	22.9659					
8	26.2467					
9	29.5275					
10	32.8084					

To convert meters to feet multiply by 3.2808  
 To convert feet to meters multiply by 0.3048

UTM grid convergence (GN) and 1983 magnetic declination (MN) at center of map  
 Diagram is approximate

1. Salt Lake  
 2. Kanab  
 3. Smoky Mountain  
 4. Litchfield  
 5. Glen Canyon Dam  
 6. Mt. Trumbull  
 7. Grand Canyon  
 8. Tuba City

FOR SALE BY U. S. GEOLOGICAL SURVEY, DENVER, COLORADO 80225 OR RESTON, VIRGINIA 22092

RETURN TO: MHO HISTORICAL MAP ARCHIVES, U.S.S. NATIONAL CENTER, MS-522, RESTON, VA 22092

### Topographic Map Symbols

- Primary highway, hard surface
- Secondary highway, hard surface
- Light duty road, principal street, hard or improved surface
- Other road or street, trail
- Route marker: Interstate, U. S., State
- Railroad: standard gage; narrow gage
- Bridge: overpass; underpass
- Tunnel: road; railroad
- Built up area: locality; elevation
- Airport: landing field; landing strip
- National boundary
- State boundary
- County boundary
- National or State reservation boundary
- Land grant boundary
- U. S. public lands survey: range, township, section
- Range, township, section line: protracted
- Power transmission line: pipeline
- Dam: dam with lock
- Cemetery: building
- Well: water well; spring
- Mine shaft: adit or cave; mine, quarry; gravel pit
- Campground; picnic area; U. S. location monument
- Fishing pier; dwelling
- Disturbed surface: strip mine, lava, sand
- Contours: index; intermediate; supplementary
- Bathymetric contours: index; intermediate
- Stream, lake: perennial; intermittent
- Rapids, large and small; falls, large and small
- Area to be submerged: marsh, swamp
- Land subject to controlled inundation; woodland
- Soak; mangrove
- Orchard; vineyard

A pamphlet describing topographic maps is available on request

### FREDONIA, ARIZONA

36112-E1-TM-10

1984

