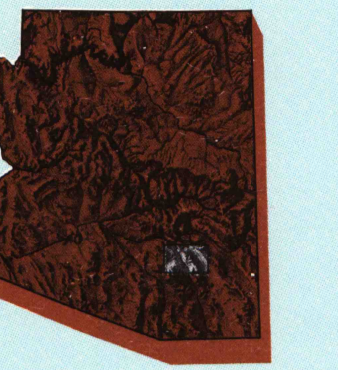


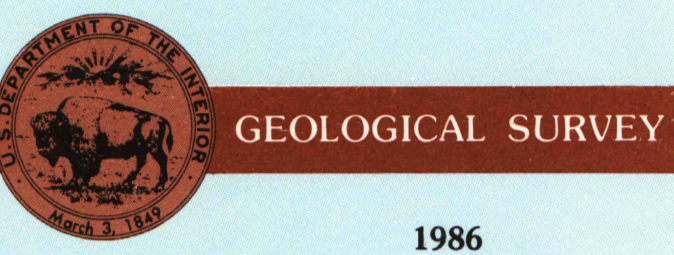
Mammoth ARIZONA

1:100 000-scale metric topographic map



30 X 60 MINUTE QUADRANGLE SHOWING

- Contours and elevations in meters
- Highways, roads and other manmade structures
- Water features
- Woodland areas
- Geographic names



Produced by the United States Geological Survey
 Compiled from USGS 1:24 000 and 1:62 500-scale topographic maps dated 1949-1972. Planimetry revised from aerial photographs taken 1965 and other source data. Revised information not field checked.
 Map edited 1986
 Projection and 10 000-meter grid, zone 12
 Universal Transverse Mercator
 25 000-foot grid ticks based on Arizona coordinate system, central and east zones. 1927 North American Datum
 To place on the predicted North American Datum 1983 move the projection lines 5 meters south and 61 meters east
 There may be private inholdings within the boundaries of the National or State reservations shown on this map

CONTOUR INTERVAL 50 METERS
 NATIONAL GEODETIC VERTICAL DATUM OF 1929
 ELEVATIONS SHOWN TO THE NEAREST METER

THIS MAP COMPLIES WITH NATIONAL MAP ACCURACY STANDARDS

CONVERSION TABLE		DECLINATION DIAGRAM		ADJOINING MAPS	
Meters	Feet	Diagram showing magnetic declination from true north.		1	2
1	3280			3	4
2	6561			5	6
3	9842			7	8
4	13123				
5	16404				
6	19685				
7	22966				
8	26247				
9	29528				
10	32809				

To convert meters to feet multiply by 32808
 To convert feet to meters multiply by 0.3048

UTM grid convergence (G90 and 1983 magnetic declination) at center of map Diagram in agreement

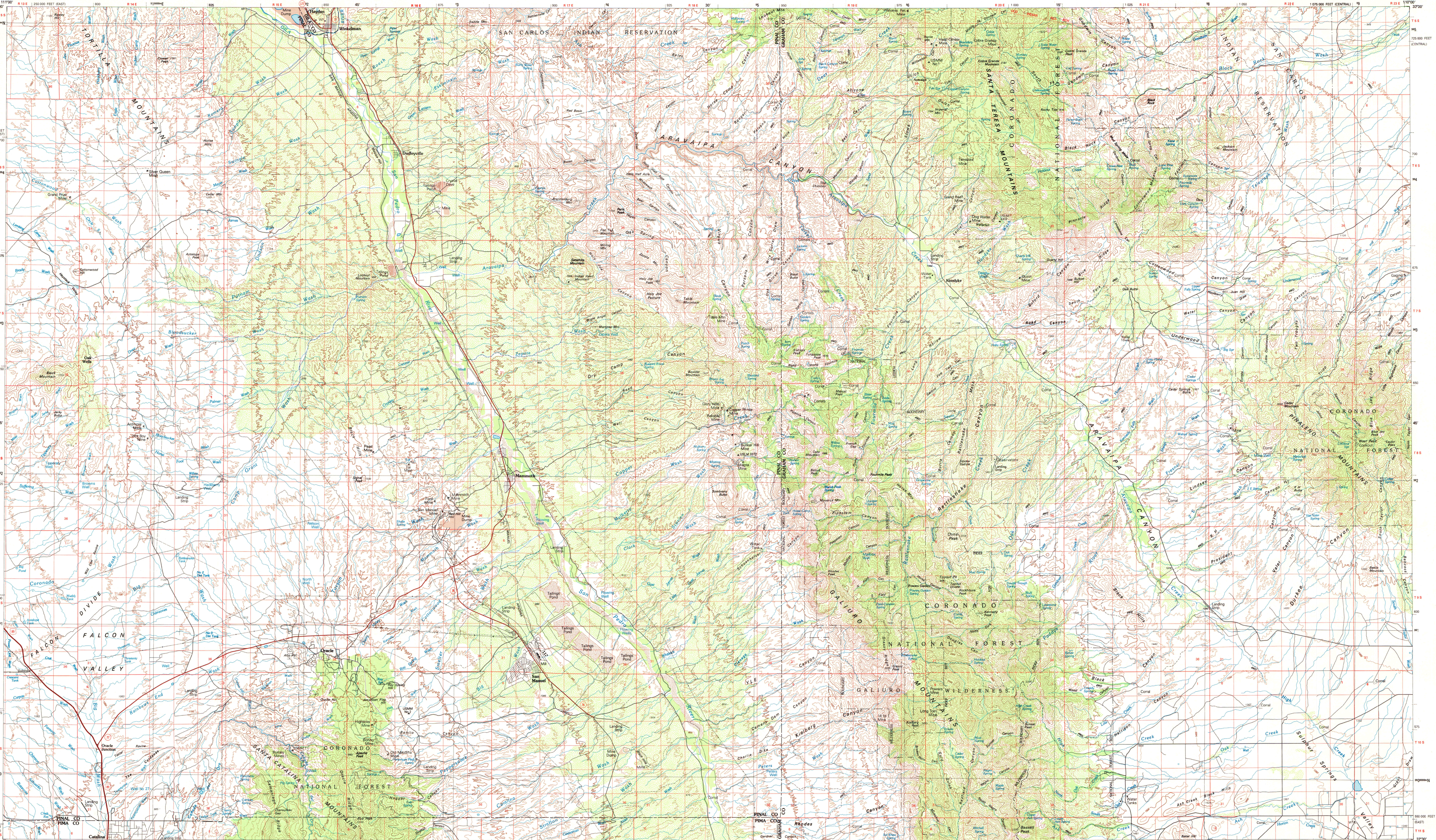
1	2	3
4	5	6
7	8	

1 Mesa
 2 Castle
 3 Clifton
 4 Catalina
 5 Silver Bell Mts.
 6 Tucson
 7 Wilcox

FOR SALE BY U. S. GEOLOGICAL SURVEY, DENVER, COLORADO 80225
 OR RESTON, VIRGINIA 22092

Topographic Map Symbols

- Primary highway, hard surface
- Secondary highway, hard surface
- Light duty road, principal street, hard or improved surface
- Other road or street, trail
- Road marker: interstate, U. S., State
- Railroad: standard gauge, narrow gauge
- Bridge, covered, underpass
- Tunnel: road, railroad
- Built up area, locality, elevation
- Airport, landing field, landing strip
- National boundary
- State boundary
- County boundary
- National or State reservation boundary
- Land grant boundary
- U. S. public lands survey: range, township, section
- Range, township, section line, generated
- Power transmission line: pipeline
- Dam, dam with lock
- Cemetery: building
- Well: water well, spring
- Mine shaft, adit or ore vein, quarry, gravel pit
- Campground, picnic area, U. S. location monument
- Ruin: cliff dwelling
- Distorted surface: strip mine, lava, sand
- Contours: index, intermediate, supplementary
- Bathymetric contours: index, intermediate
- Stream, lake: perennial, intermittent
- Rapids, large and small; falls, large and small
- Area to be submerged, marsh, swamp
- Land subject to controlled inundation, woodland
- Island: wooded
- Orchard: viewshed



SCALE 1:100 000
 1 CENTIMETER ON THE MAP REPRESENTS 1 KILOMETER ON THE GROUND
 1 INCH ON THE MAP REPRESENTS 25.34 MILES ON THE GROUND

CONTOUR INTERVAL 50 METERS

0 1 2 3 4 5 6 7 8 9 10 11 12 13 14 15 16 17 18 19 20 KILOMETERS

0 1 2 3 4 5 6 7 8 9 10 11 12 13 14 15 16 17 18 19 20 MILES

U. S. Regional Depository Copy DO NOT DISCARD

MAMMOTH, ARIZONA
 32110-E1-TM-100
 1986

MAR 18 1987

ARTHUR H. ROBINSON MAP LIBRARY
 University of Wisconsin-Hudson

B006-918