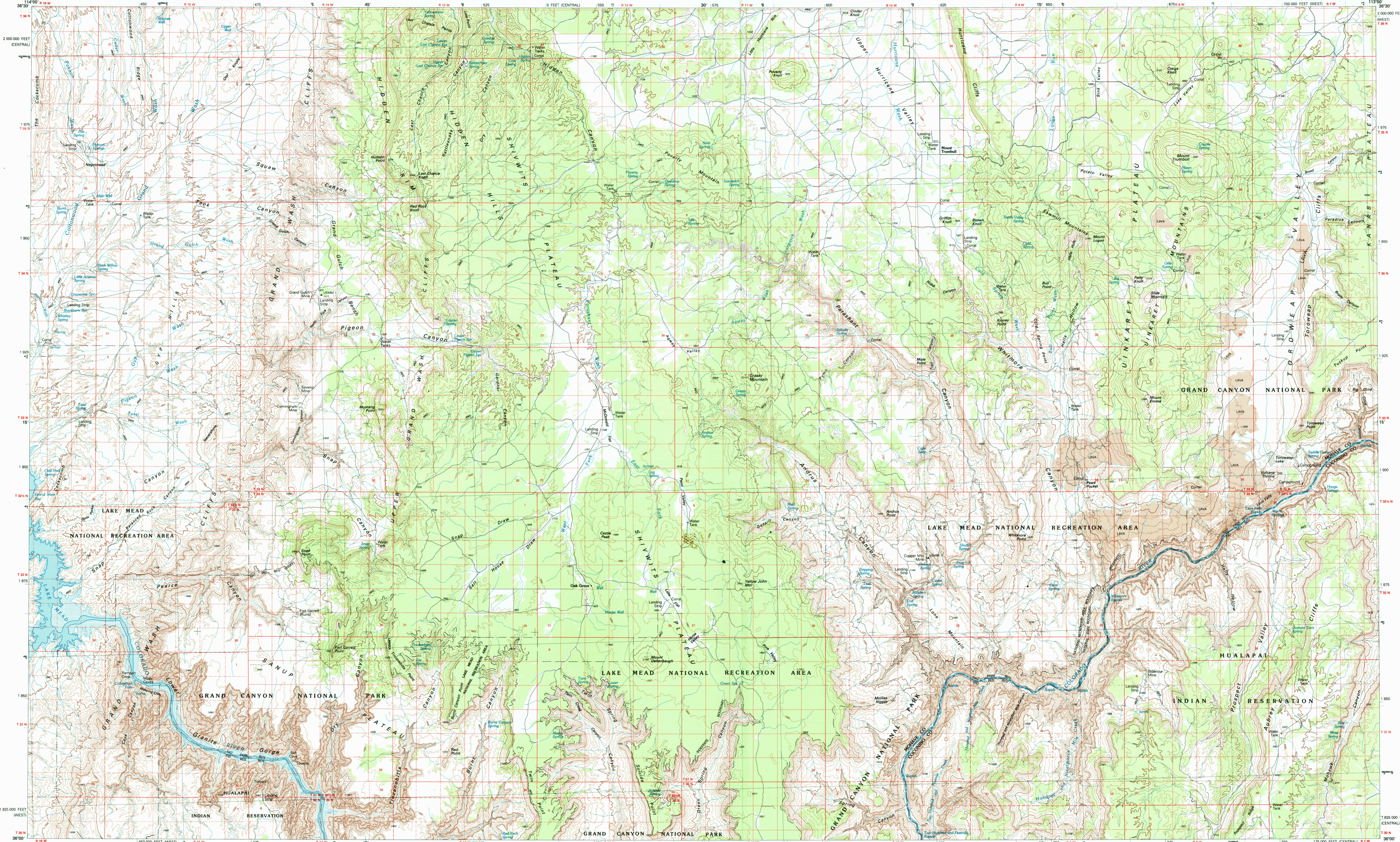


MOUNT TRUMBULL, ARIZONA

30X60 MINUTE SERIES (TOPOGRAPHIC)



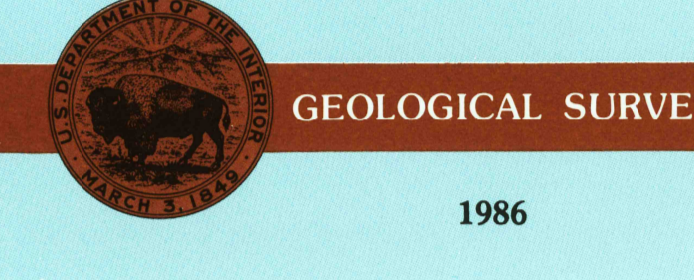
Mount Trumbull ARIZONA

1:100 000-scale metric topographic map



30 X 60 MINUTE QUADRANGLE SHOWING

- Contours and elevations in meters
- Highways, roads and other manmade structures
- Water features
- Woodland areas
- Geographic names



Produced by the United States Geological Survey
 Compiled from USGS 1:250 000-scale topographic maps dated 1967-1971. Planimetry revised from aerial photographs taken 1980 and other source data. Revised information not field checked. Map edited 1986.
 Projection and 10 000-meter grid, zone 12 Universal Transverse Mercator
 25 000-foot grid ticks based on Arizona coordinate system west and central zones, 1927 North American Datum. To place on the predicted North American Datum 1983 move the projection lines 5 meters north and 70 meters east. There may be private buildings within the boundaries of the National or State reservations shown on this map.

CONTOUR INTERVAL 50 METERS
NATIONAL GEODETIC VERTICAL DATUM OF 1929
ELEVATIONS SHOWN TO THE NEAREST METER

THIS MAP COMPLIES WITH NATIONAL MAP ACCURACY STANDARDS

FOR SALE BY U.S. GEOLOGICAL SURVEY,
P.O. BOX 25286, DENVER, COLORADO, 80225

CONVERSION TABLE		DECLINATION DIAGRAM		ADJOINING MAPS		
Meters	Feet	CA	MA	1	2	3
1	3.2808			4	7	8
2	6.5617					
3	9.8425					
4	13.1233					
5	16.4042					
6	19.6850					
7	22.9659					
8	26.2467					
9	29.5275					
10	32.8084					

To convert meters to feet multiply by 3.2808
 To convert feet to meters multiply by 0.3048

UTM grid convergence (GN) and 1983 magnetic declination (MD) at center of map. Diagram is approximate.

1	Chino
2	Litchfield
3	Flagstaff
4	Lake Mead
5	Grand Canyon
6	Bozeman
7	Peach Springs
8	Valle



RECEIVED
MAR 31 1993

USGS/NM
HISTORICAL MAP ARCHIVES

Topographic Map Symbols

- Primary highway, hard surface
- Secondary highway, hard surface
- Light city road, principal street, hard or improved surface
- Other road or street, trail
- Route marker: interstate, U. S. State
- Railroad: standard gage; narrow gage
- Bridge: overpass, underpass
- Tunnel: road, railroad
- Built up area, locality, elevation
- Airport, landing field, landing strip
- National boundary
- State boundary
- County boundary
- National or State reservation boundary
- Land grant boundary
- County lands survey: range, township, section
- Range, township, section line: protracted
- Power transmission line: pipeline
- Dam: dam with lock
- Cemetery: building
- Windmill; water well; spring
- Mine shaft; adit or cave; mine, quarry; gravel pit
- Compass; picnic area; U. S. location monument
- Shale; cliff dwelling
- Distorted surface: strip mine, levee, sand
- Contours: index; intermediate; supplementary
- Bathymetric contours: index, intermediate
- Stream, lake, perennial, intermittent
- Swamp, large and small; bog, large and small
- Area to be submerged; marsh, swamp
- Land subject to controlled inundation; woodland
- Scrub; mangrove
- Orchard; vineyard

A pamphlet describing topographic maps is available on request