



Silver Bell Mountains
ARIZONA

1:100 000-scale metric
topographic map



30 X 60 MINUTE QUADRANGLE
SHOWING

- Contours and elevations in meters
- Highways, roads and other manmade structures
- Water features
- Woodland areas
- Geographic names



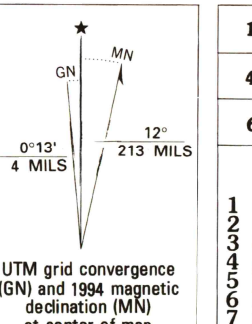
1994

Produced by the United States Geological Survey
Compiled from USGS 1:24 000-scale topographic maps dated 1967-1989. Planimetry revised from aerial photographs taken 1992 and other source data. Revised information not field-checked. Map revised 1994
North American Datum of 1927 (NAD 27). Projection and 10 000-meter grid: Universal Transverse Mercator, zone 12
25 000-meter ticks: Arizona coordinate system, central zone
The values of the shift between NAD 27 and North American Datum of 1983 (NAD 83) for 7.5-minute intersections are obtainable from National Geodetic Survey NADCON software
There may be private inholdings within the boundaries of the National or State reservations shown on this map

CONTOUR INTERVAL 20 METERS
NATIONAL GEODETIC VERTICAL DATUM OF 1929
ELEVATIONS SHOWN TO THE NEAREST METER

THIS MAP COMPLIES WITH NATIONAL MAP ACCURACY STANDARDS

FOR SALE BY U.S. GEOLOGICAL SURVEY
P.O. BOX 23286, DENVER, COLORADO, 80225

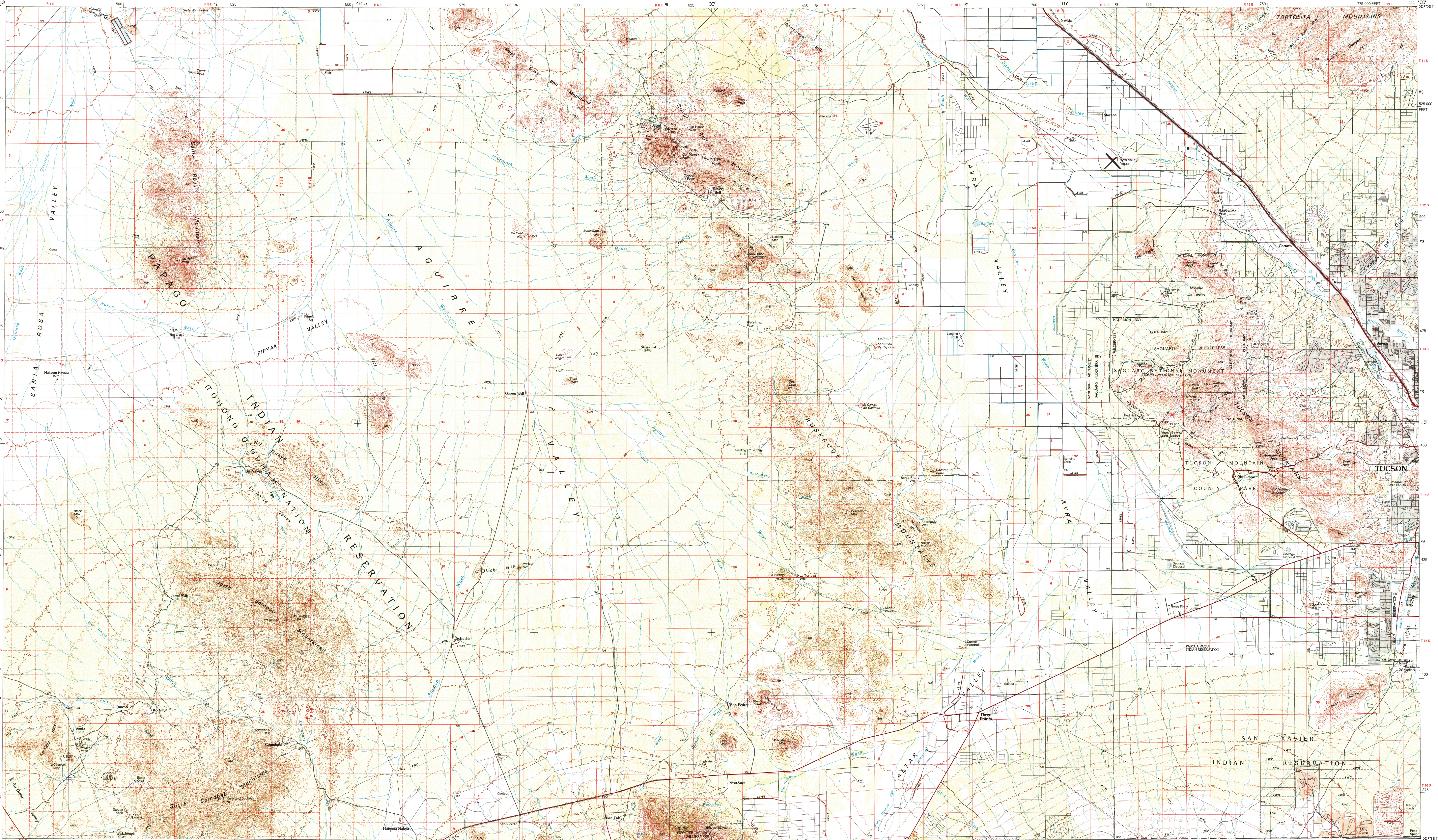
CONVERSION TABLE		DECLINATION DIAGRAM	ADJOINING MAPS	
Meters	Feet		1 2 3	
2	6 561		4 5	
4	13 122		6 7 8	
6	19 683			
8	26 144			
10	32 804			
To convert meters to feet multiply by 3.2808			UTM grid convergence (GTM) and tape magnetic declination (MDM) at center of map. Diagram is approximate.	1 Cila Bend
To convert feet to meters multiply by 0.3048				2 San Carlos
				3 Tucson
				4 Lukeville
			5 Santa Rita	
			6 Fort Huachuca	

RECEIVED
JAN 31 2000

USGS NHD
HISTORICAL MAP ARCHIVES

Topographic Map Symbols

Primary highway, hard surface	
Secondary highway, hard surface	
Light duty road, principal street, hard or improved surface	
Other road or street, trail	
Route marker: Interstate, U. S. State	
Railroad: standard gage, narrow gage	
Bridge: overpass, underpass	
Tunnel: road, railroad	
Built up area, locality, elevation	
Airport, landing field, landing strip	
National boundary	
State boundary	
County boundary	
National or State reservation boundary	
Land grant boundary	
U. S. public lands survey: range, township, section	
Range, township, section line: protected	
Power transmission line: pipeline	
Dam; dam with lock	
Cemetery: building	
Windmill; water well; spring	
Mine shaft; adit or cave; mine, quarry, gravel pit	
Campground; picnic area; U. S. location monument	
Ruin; cliff dwelling	
Distorted surface: strip mine, lava, sand	
Contours: index, intermediate, supplementary	
Barometric contour: index, intermediate	
Stream, lake, perennial, intermittent	
Rapids, large and small; falls, large and small	
Area to be submerged; marsh, swamp	
Land subject to controlled inundation, woodland	
Gravel; margin	
Drainage; sewer	



SCALE 1:100 000
1 CENTIMETER ON THE MAP REPRESENTS 1 KILOMETER ON THE GROUND
CONTOUR INTERVAL 20 METERS

KILOMETERS 0 1 2 3 4 5 6 7 8 9 10 11 12 13 14 15 16 17 18 19 20

MILES 0 1 2 3 4 5 6 7 8 9 10 11 12 13 14 15 16 17 18 19 20