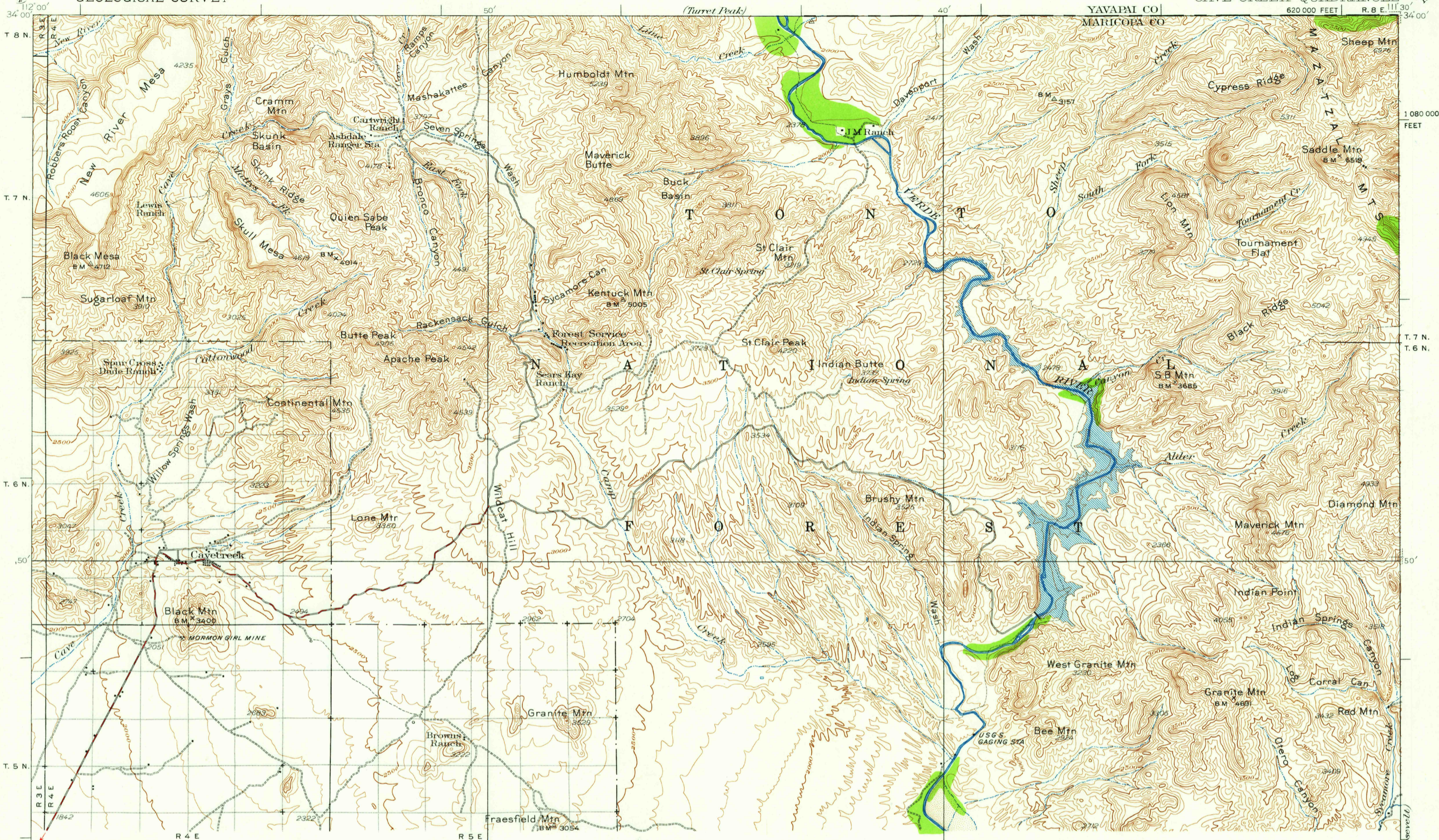


UNITED STATES
DEPARTMENT OF THE INTERIOR
GEOLOGICAL SURVEY

ARIZONA
CAVE CREEK QUADRANGLE



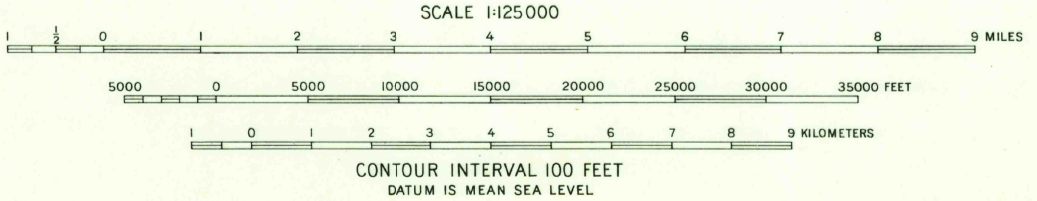
THIS QUARTER IS SHOWN ON THE MAP OF CAMELSBACK
QUADRANGLE, SURVEYED IN 1903 AND 1904, SCALE 1:62 500

THIS QUARTER IS SHOWN ON THE MAP OF FT. MCDOWELL
QUADRANGLE, SURVEYED IN 1904, SCALE 1:62 500

Topography by W.G. Carson
Surveyed in 1929-1930

ROAD CLASSIFICATION
Medium-duty ——— Light-duty ———
Unimproved dirt - - - - -

(Mesa 1:92 500)
APPROXIMATE MEAN
DECLINATION, 1930



(Desert Well 1:62 500)

6	5	4	3	2	1
7	8	9	10	11	12
13	14	15	16	17	18
19	20	21	22	23	24
25	26	27	28	29	30
31	32	33	34	35	36

Interior—Geological Survey, Washington, D. C.—1959
Polyconic projection. To place on 1927 North American datum
move projection lines 100 feet west
20,000-foot grid based on Arizona (Central)
rectangular coordinate system
To join Roosevelt map, use dotted projection corners

CAVE CREEK, ARIZ.
N 3330—W 11130/30
1930

FOR SALE BY U. S. GEOLOGICAL SURVEY, DENVER 2, COLORADO OR WASHINGTON 25, D. C.
A FOLDER DESCRIBING TOPOGRAPHIC MAPS AND SYMBOLS IS AVAILABLE ON REQUEST

USGS
Historical File
Topographic Division

U.S.G.S.
FILE COPY
TOPOGRAPHIC DIVISION

APR 6 1959

1850