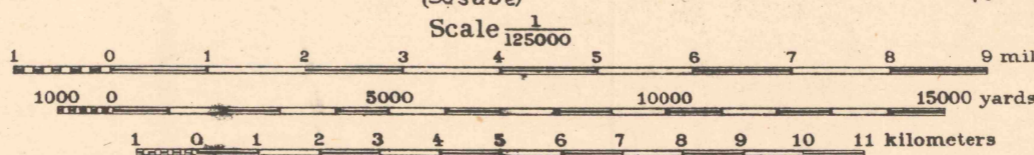




Prepared under the direction of Col. W. P. Stoekey,
Corps of Engineers, U.S.A. Department Engineer,
Southern Department, 1918.

Control: International Boundary Commission, 1882-1889,
Township plats of U.S. General Land Office; Nomadic Papago
(Indian) Surveys, 1915; Coronado National Forest, 1912; Pima County, 1893.

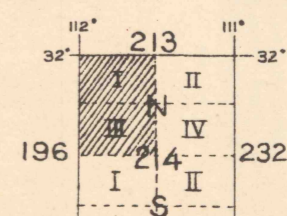


Contour Interval 100 feet

Datum is mean sea level

NOTE: OFFICERS USING THIS MAP WILL MARK NECESSARY CORRECTIONS AND ADDITIONS WHICH COME
TO THEIR ATTENTION AND MAIL DIRECT TO THE CHIEF OF ENGINEERS, WASHINGTON, D. C.

ARMY MAP SERVICE, U. S. ARMY, WASHINGTON, D. C., 101227
10/43 W.H. 1943 1920



APPROXIMATE MEAN
DECLINATION 1920

FRESNAL - Ariz.

FILE COPY
Map Information Office