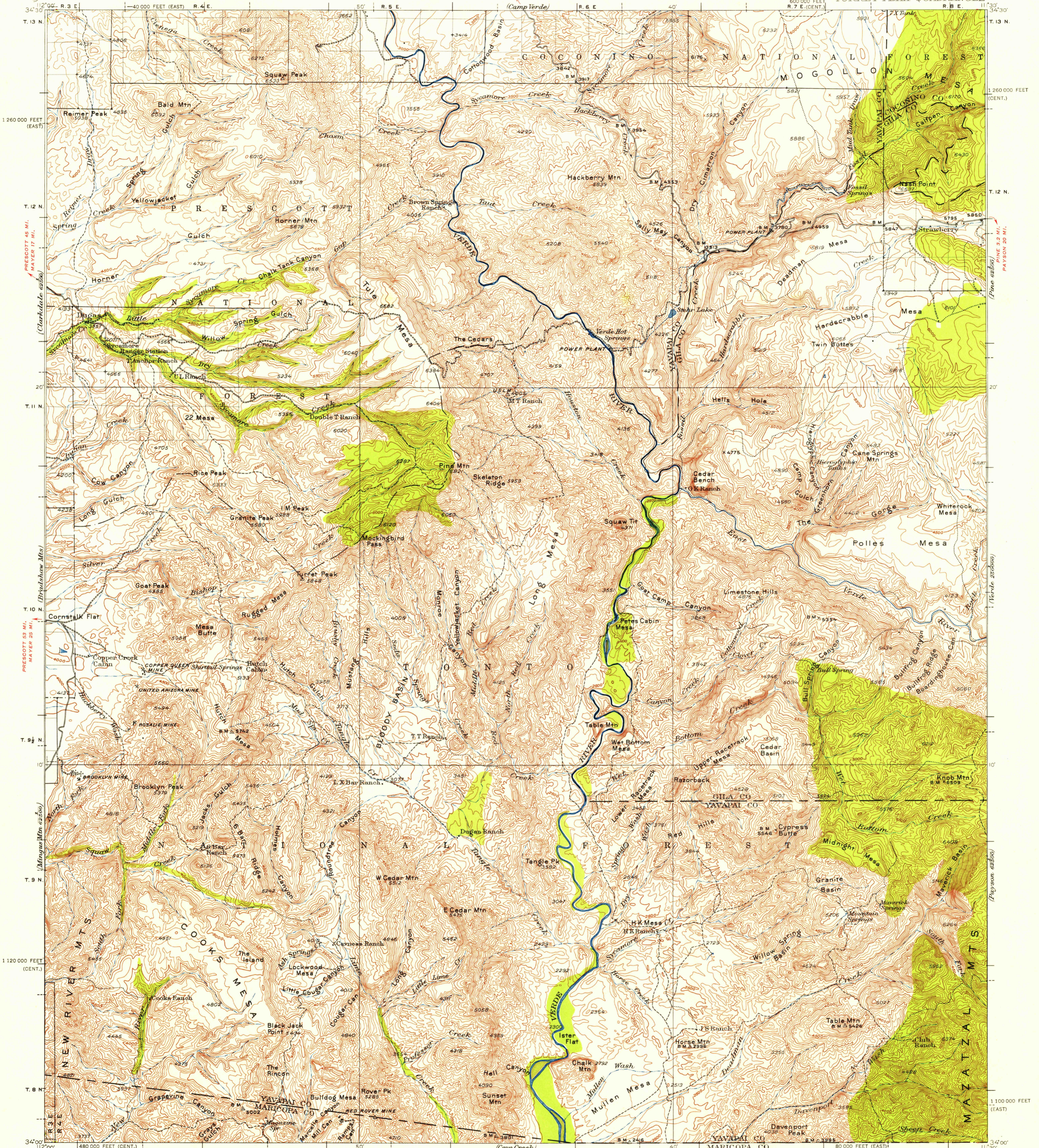


UNITED STATES
DEPARTMENT OF THE INTERIOR
GEOLOGICAL SURVEY

29 MI. TO ALT. U.S. 89
CAMP VERDE 9.5 MI.

ARIZONA
TURRET PEAK QUADRANGLE



Topography by W. G. Carson and C. W. H. Nessler
Surveyed in 1928 and 1929

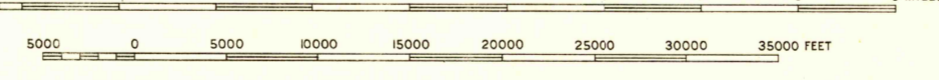
SCALE 1:25000

INTERIOR-GEOLOGICAL SURVEY
WASHINGTON, D. C. - 1958

Polyconic projection. To place on 1927 North American datum
move projection lines 90 feet west
20,000-foot grids based on Arizona (Central) and
Arizona (East) rectangular coordinate systems
To join Bradshaw Mts. use dotted projection corners

ROAD CLASSIFICATION
Light-duty ————— Unimproved dirt - - - - -

TRUE NORTH
MAGNETIC NORTH
APPROXIMATE MEAN
DECLINATION, 1951



CONTOUR INTERVAL 100 FEET
DATUM IS MEAN SEA LEVEL

DIAGRAM OF TOWNSHIP

6	5	4	3	2	1
7	8	9	10	11	12
13	14	15	16	17	18
19	20	21	22	23	24
25	26	27	28	29	30
31	32	33	34	35	36

FOR SALE BY U. S. GEOLOGICAL SURVEY, DENVER 2, COLORADO OR WASHINGTON 25, D. C.
A FOLDER DESCRIBING TOPOGRAPHIC MAPS AND SYMBOLS IS AVAILABLE ON REQUEST

U.S.G.S.
FILE COPY
TOPOGRAPHIC DIVISION

TURRET PEAK, ARIZ.
N 3400 - W 11130/30
1929

JAN 10 1958

1890