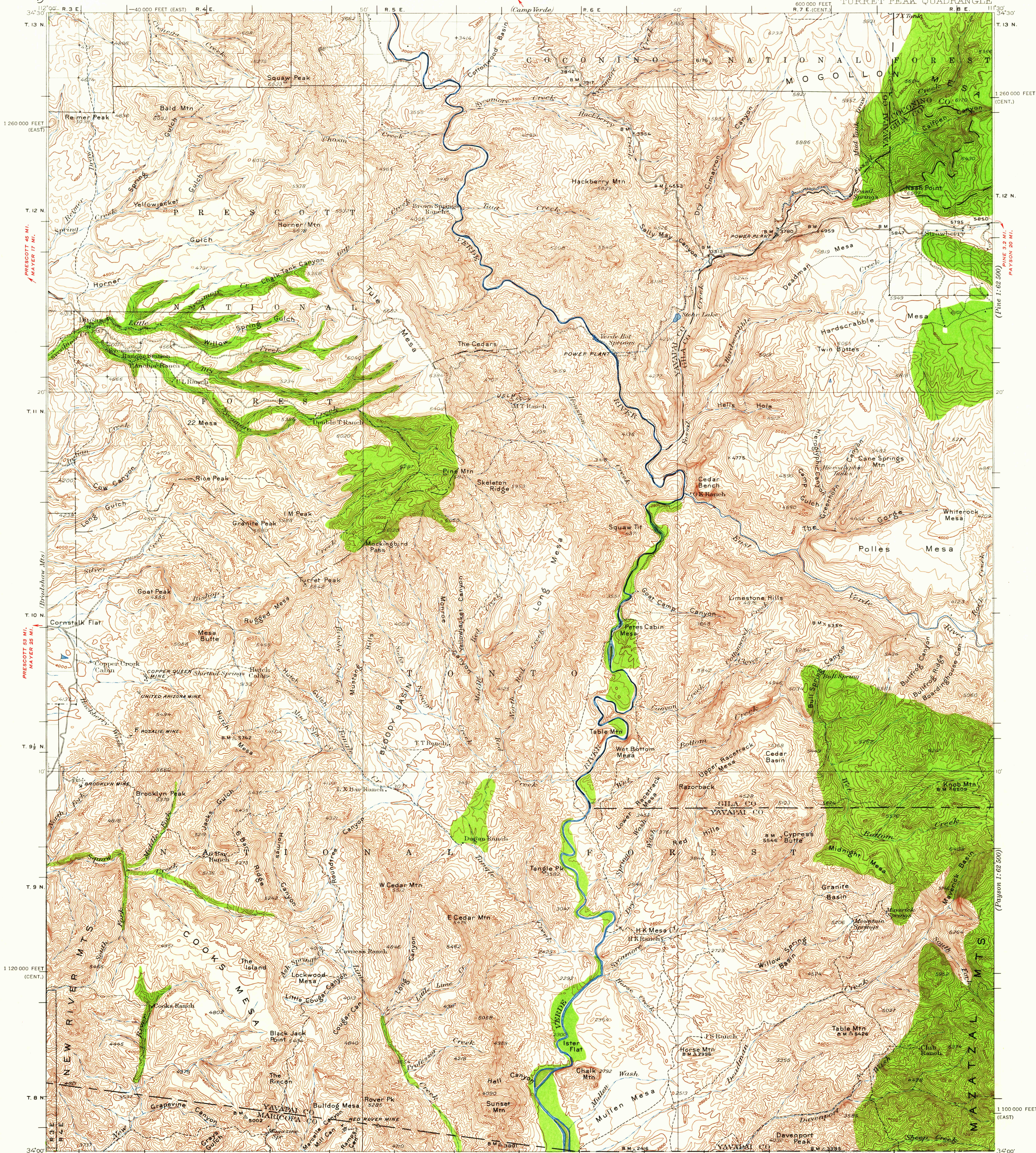


29 MI. TO ALT. U.S. 89
CAMP VERDE 9.5 MI.



PRESCOTT 45 MI.
MAYER 17 MI.

(Phone 1:62 500) 9.5 MI.
PAYSON 20 MI.

Topography by W.G. Carson and C.W.H. Nessler
Surveyed in 1928 and 1929

ROAD CLASSIFICATION
Light-duty ——— Unimproved dirt - - - - -

APPROXIMATE MEAN
DECLINATION, 1929

SCALE 1:25000

0 1 2 3 4 5 6 7 8 9 MILES

0 5000 10000 15000 20000 25000 30000 35000 FEET

0 1 2 3 4 5 6 7 8 9 KILOMETERS

CONTOUR INTERVAL 100 FEET
DATUM IS MEAN SEA LEVEL

DIAGRAM OF TOWNSHIP

6	5	4	3	2	1
7	8	9	10	11	12
13	14	15	16	17	18
19	20	21	22	23	24
25	26	27	28	29	30
31	32	33	34	35	36

Polycyclic projection. To place on 1927 North American datum
move projection lines 90 feet west
20,000-foot grids based on Arizona (Central) and
Arizona (East) rectangular coordinate systems
To join Bradshaw Mts. use dotted projection corners

TURRET PEAK, ARIZ.
N 3400 - W 11130 / 30

1929