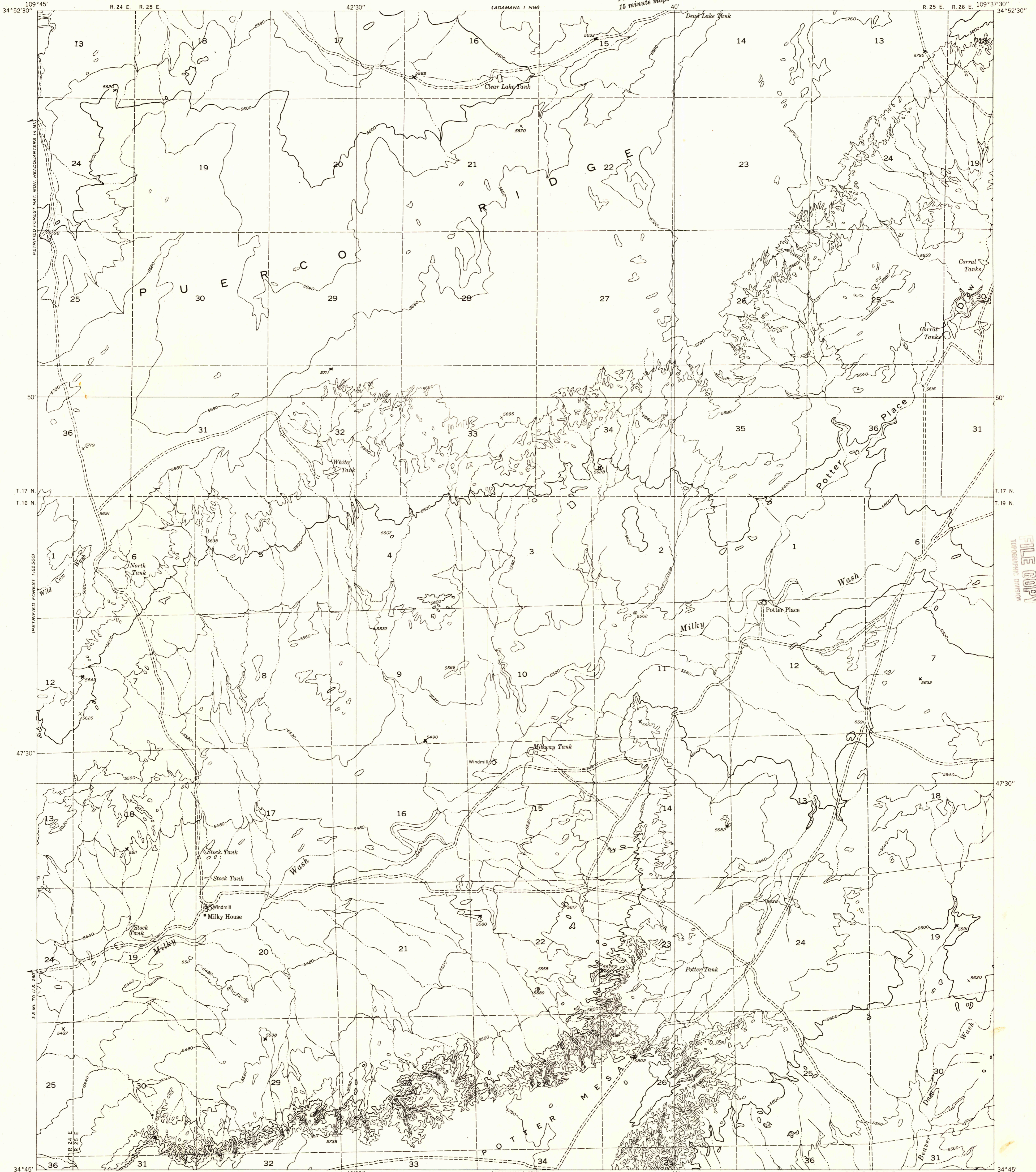


DEPARTMENT OF THE INTERIOR
GEOLOGICAL SURVEY

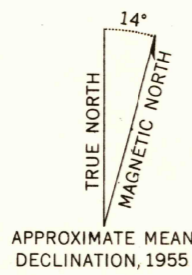
Preliminary edition
Pending completion of 1:62,500 scale
15 minute maps covering this area

ADAMANA 1 SW QUADRANGLE
ARIZONA—APACHE CO.

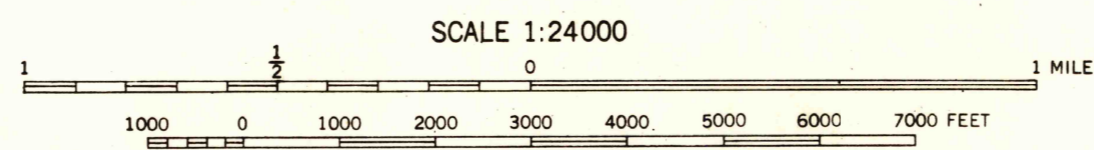


Mapped by the Geological Survey 1955

Topography by multiplex methods from
aerial photographs taken 1953
Dashed land lines indicate approximate locations
Symbols and other detail herein
drawn for 1:62 500 scale publication



APPROXIMATE MEAN
DECLINATION, 1955



SCALE 1:24000

CONTOUR INTERVAL 40 FEET
DATUM IS MEAN SEA LEVEL

INTERIOR—GEOLOGICAL SURVEY, WASHINGTON, D. C.—1955

USGS
Historical File
Topographic Division

ROAD CLASSIFICATION
Improved ——— Unimproved - - - - -

U.S.G.S.
FILE COPY
TOPOGRAPHIC DIVISION

ADAMANA 1 SW, ARIZ.
N3445—W10937.5/7.5