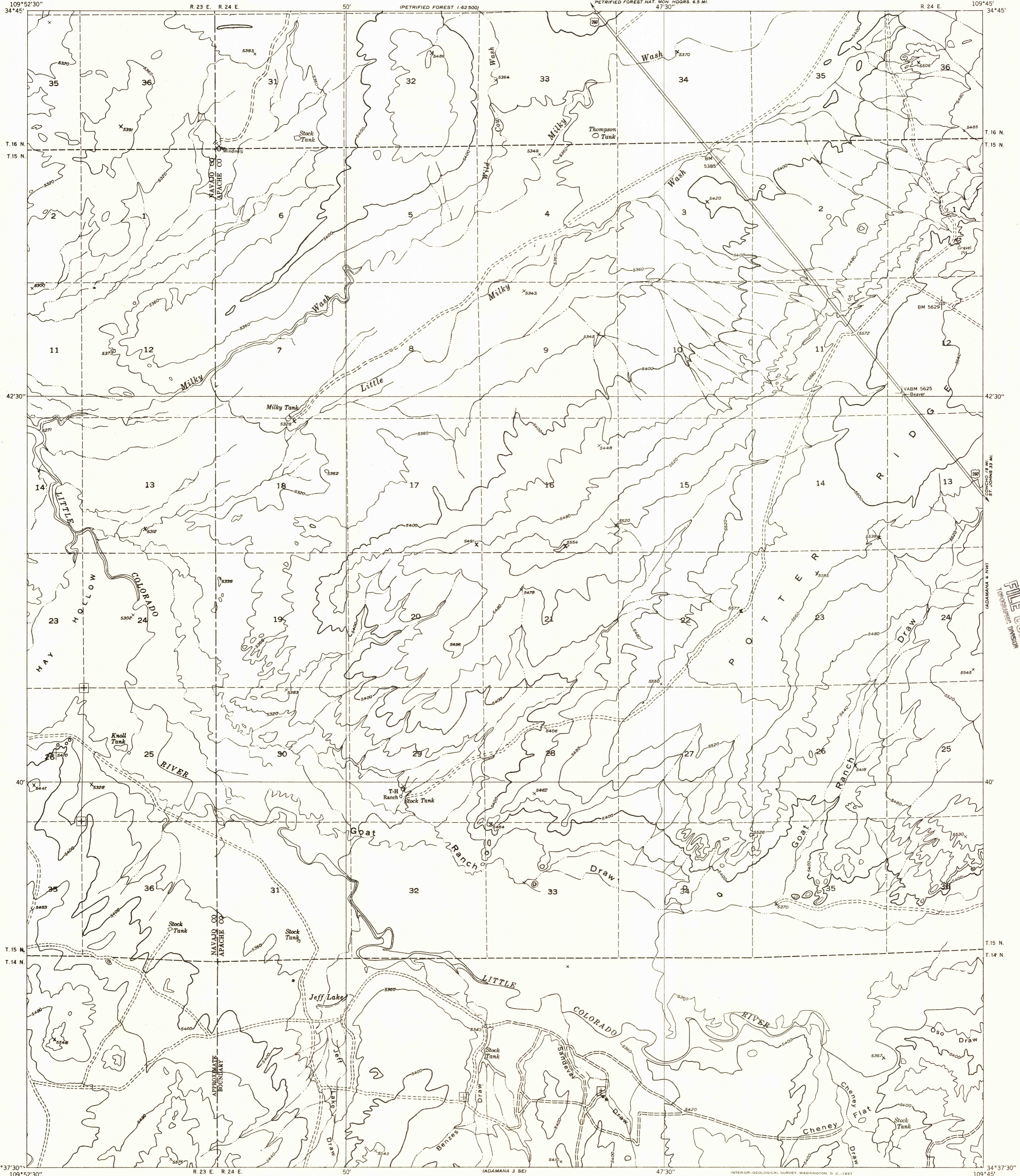


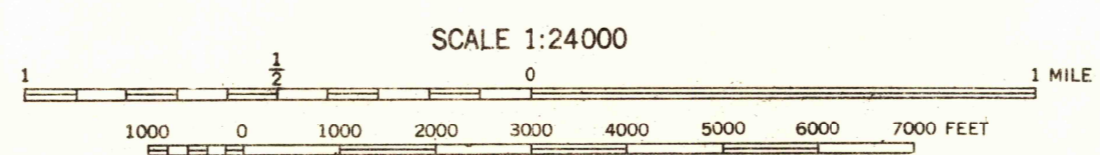
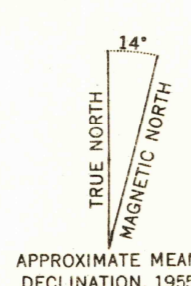
DEPARTMENT OF THE INTERIOR
GEOLOGICAL SURVEY

Preliminary edition
Pending completion of 1:62,500 scale
15 minute maps covering this area
HOLBROOK U.S. 661 24 M.
PETRIFIED FOREST NAT. MON. HOORS. 6.5 MI.
47°30'

ADAMANA 3 NE QUADRANGLE
ARIZONA



Mapped by the Geological Survey 1955
Topography by multiplex methods from
aerial photographs taken 1953-54
Symbols and other detail herein
drawn for 1:62,500 scale publication
Dashed land lines indicate approximate locations



SCALE 1:24000
CONTOUR INTERVAL 40 FEET
DATUM IS MEAN SEA LEVEL

U.S.G.S.
Historical File
Topographic Division

ROAD CLASSIFICATION
Improved ——— Unimproved - - - - -

U.S.G.S.
FILE COPY
TOPOGRAPHIC DIVISION

ADAMANA 3 NE, ARIZ.
N3437.5-W10945.7.5

PETRIFIED FOREST
 109°52'30"
 34°45'
 T. 16 N.
 T. 15 N.
 42°30'
 40°
 T. 15 N.
 T. 14 N.
 34°37'30"
 109°52'30"
 R. 23 E. R. 24 E.
 50'
 (PETRIFIED FOREST 1:62,500)
 (ADAMANA 3 SE)
 47°30'
 INTERIOR-GEOLOGICAL SURVEY, WASHINGTON, D. C.-1957
 109°45'
 34°45'
 T. 16 N.
 T. 15 N.
 42°30'
 40°
 T. 15 N.
 T. 14 N.
 34°37'30"
 109°45'
 R. 24 E.
 (ADAMANA 4 NW)
 (ADAMANA 4 SW)

U.S.G.S.
FILE COPY
TOPOGRAPHIC DIVISION