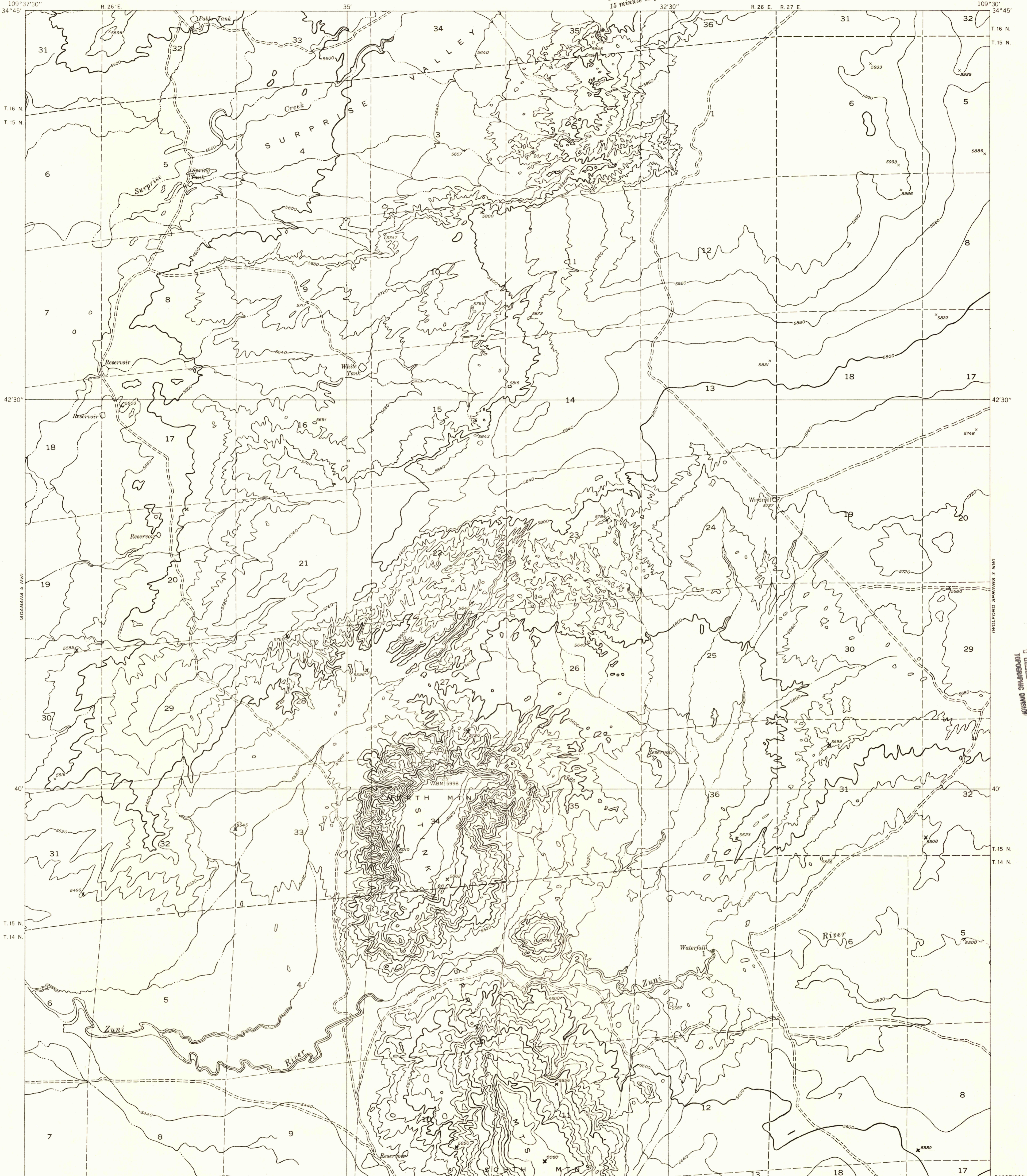


DEPARTMENT OF THE INTERIOR
GEOLOGICAL SURVEY

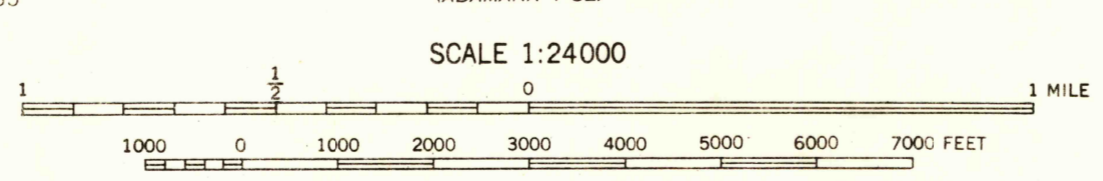
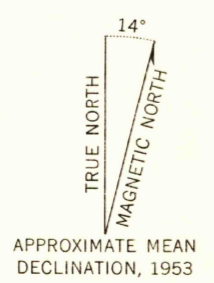
Preliminary edition
Pending completion of 1:62,500 scale
15 minute maps covering this area

ADAMANA 4 NE QUADRANGLE
ARIZONA-APACHE CO.



U.S.G.S.
FILE COPY
TOPOGRAPHIC DIVISION

Mapped by the Geological Survey 1955
Topography by multiplex methods from
aerial photographs taken 1953
Dashed land lines indicate approximate locations
Symbols and other detail herein
drawn for 1:62,500 scale publication



SCALE 1:24000
CONTOUR INTERVAL 40 FEET
DATUM IS MEAN SEA LEVEL

U.S.G.S.
Historical File
Topographic Division

ROAD CLASSIFICATION
Improved ——— Unimproved - - - - -

U.S.G.S.
FILE COPY
TOPOGRAPHIC DIVISION

ADAMANA 4 NE, ARIZ.
N3437.5-W10930/7.5

JAN 28 1957

2050