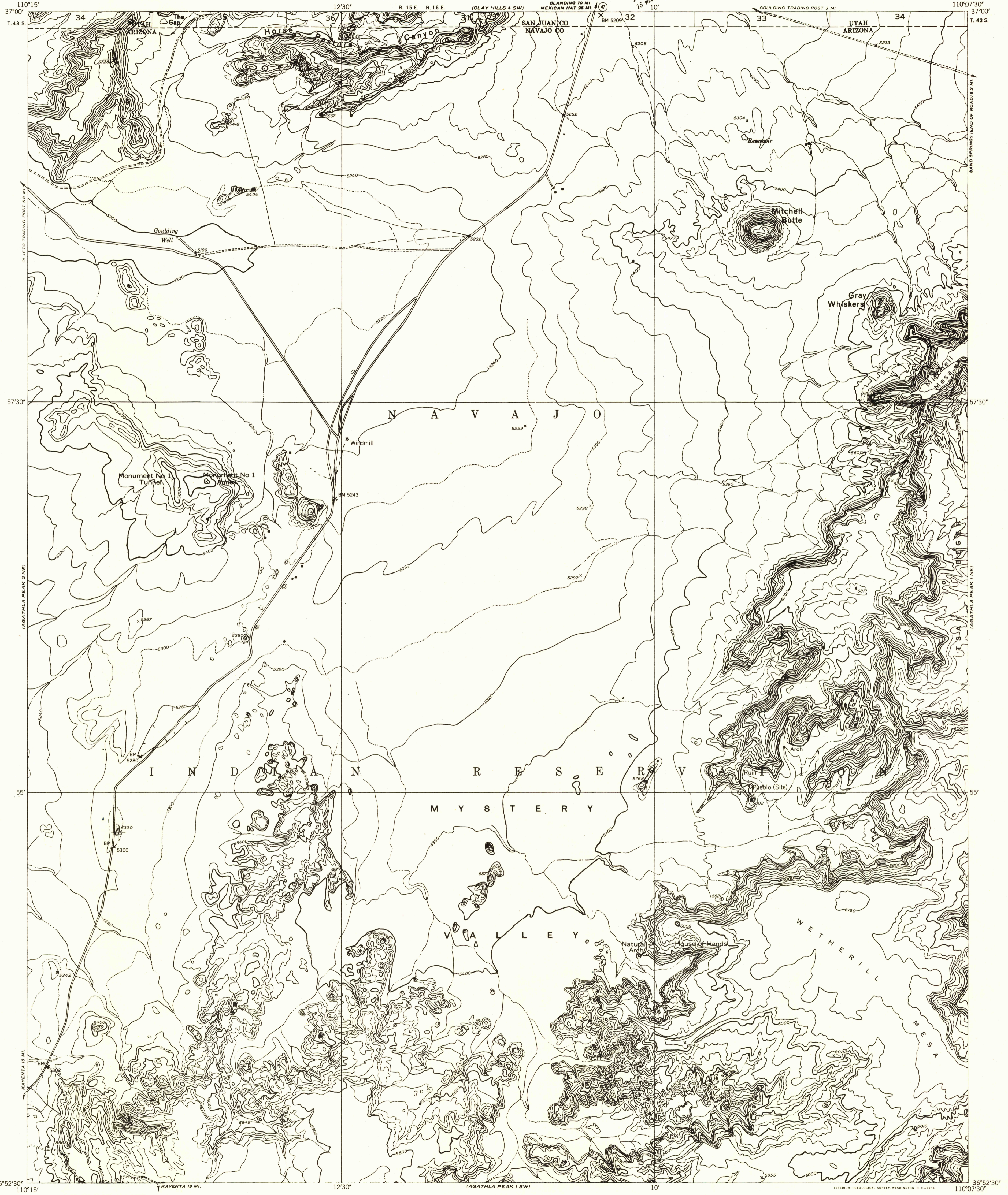


DEPARTMENT OF THE INTERIOR  
GEOLOGICAL SURVEY

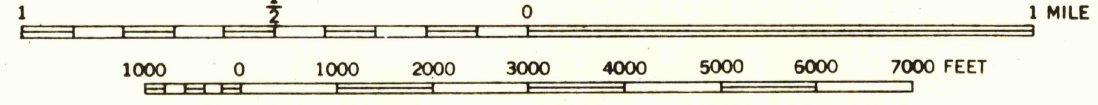
AGATHLA PEAK 1 NW QUADRANGLE  
ARIZONA-UTAH

Preliminary edition  
Pending completion of 1:62,500 scale  
15 minute maps covering this area



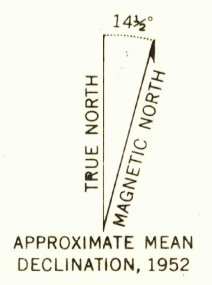
Mapped by the Geological Survey 1952  
Topography by multiplex methods from  
aerial photographs taken 1951

SCALE 1:24000



USGS  
Historical File  
Topographic Division

ROAD CLASSIFICATION  
Improved ——— Unimproved - - - - -



CONTOUR INTERVAL 40 FEET  
DOTTED LINES REPRESENT HALF-INTERVAL CONTOURS  
DATUM IS MEAN SEA LEVEL

AGATHLA PEAK 1 NW, ARIZ-UTAH  
N3652.5-W11007.5/7.5

SEP 15 1954