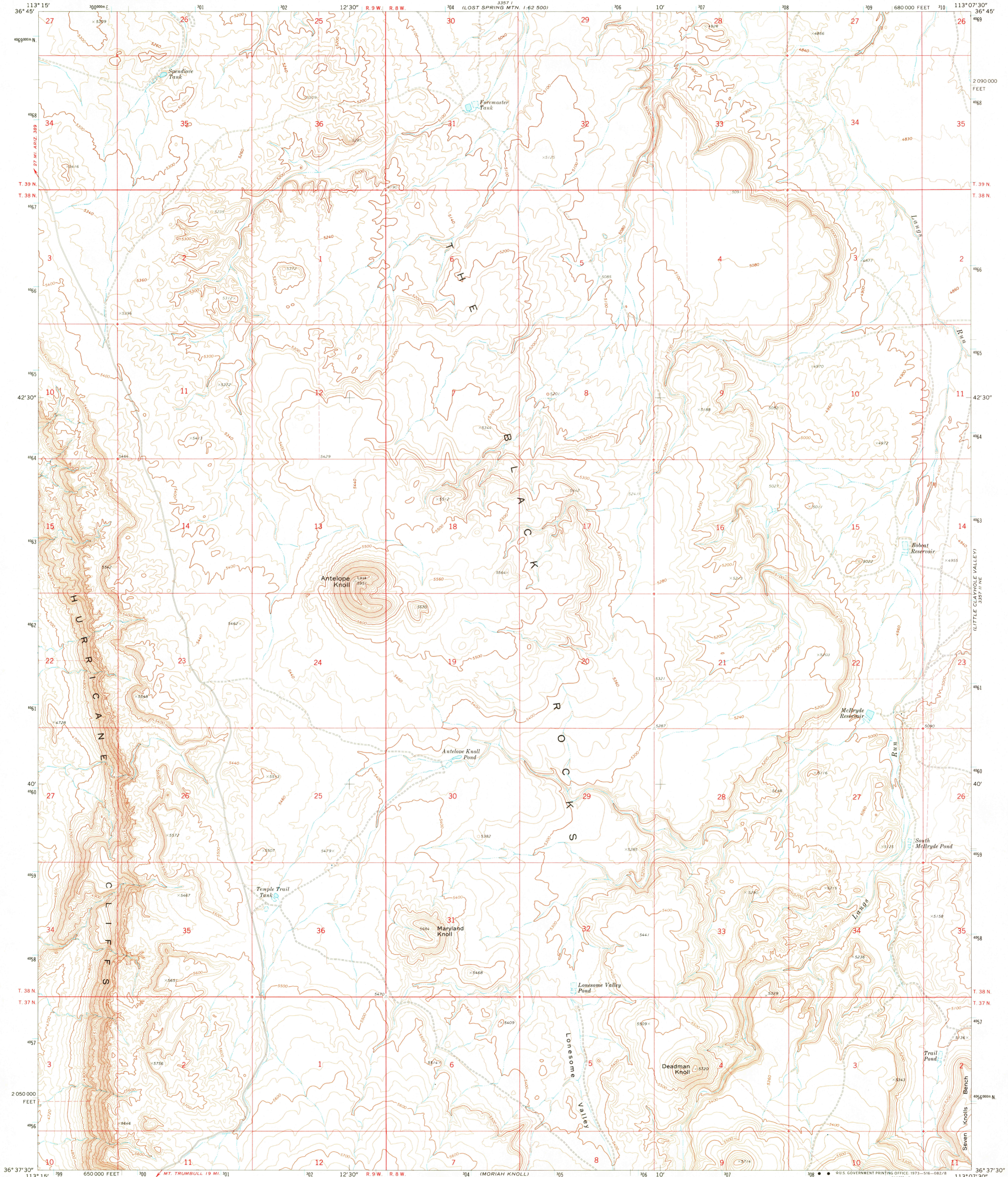
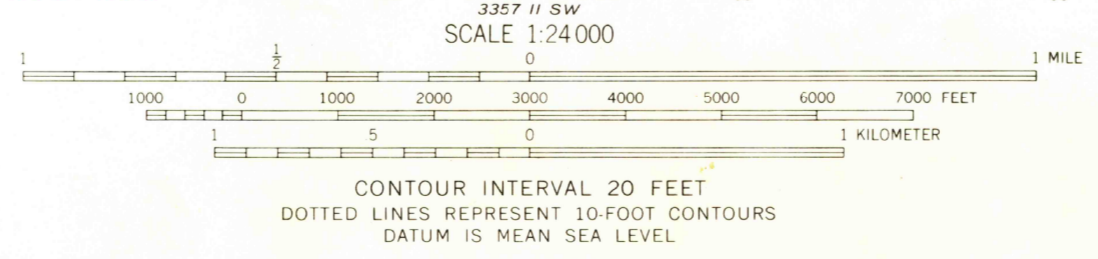
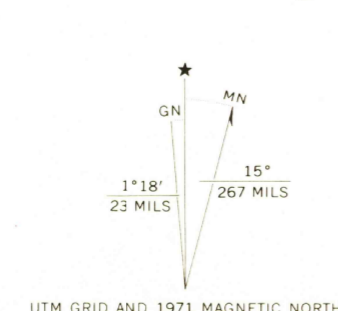


3357 II NW  
LOST SPRING MOUNTAIN  
80225



Mapped, edited, and published by the Geological Survey  
Control by USGS and USC&GS  
Topography by photogrammetric methods from aerial photographs taken 1970. Field checked 1971  
Projection and 10,000-foot grid ticks: Arizona coordinate system, west zone (transverse Mercator)  
1000-meter Universal Transverse Mercator grid ticks, zone 12, shown in blue. 1927 North American datum  
Fine red dashed lines indicate selected fence



ROAD CLASSIFICATION

Primary highway, hard surface	Light-duty road, hard or improved surface
Secondary highway, hard surface	Unimproved road
Interstate Route	U. S. Route
	State Route

SEP 28 1973  
ANTELOPE KNOLL, ARIZ.  
N3637.5-W11307.5/7.5

THIS MAP COMPLIES WITH NATIONAL MAP ACCURACY STANDARDS  
FOR SALE BY U. S. GEOLOGICAL SURVEY, DENVER, COLORADO 80225, OR WASHINGTON, D. C. 20242  
A FOLDER DESCRIBING TOPOGRAPHIC MAPS AND SYMBOLS IS AVAILABLE ON REQUEST

Handwritten notes: 7000, 3000, 5000